

WIPEOUT



STUDIO



FRIENDS,

The writer of *Wipeout* calls it a “surf comedy.” I can say with certainty that this is the first play in that category Studio has ever produced!

Aurora Real de Asua has roots in coastal California, and in Spain's Basque Country. She drew the inspiration for *Wipeout* from both places. *Wipeout* is a love letter to ocean life—to surf culture, to being on the water, and to the perspective one gains by living next to the power and immensity of the sea. The play is equally a love letter to Aurora's Spanish grandmother and her friends, free-spirited women who left Aurora with the powerful idea that people often become stronger versions of themselves as they age. The notion that growing older brings us closer to core of who we are is an engine of this play, and it moves me.

The whole play takes place on the water, and I was ready to dismiss it as unstageable. But our Associate Artistic Director Danilo pitched me on a staging notion that could liberate a production from literal reality and invite audiences to lean in as they experience something strange and delightful. I was sold. This is the first production that Danilo is directing at Studio. It strikes me as an appropriate debut for a director who operates with a degree of fearlessness and, even more importantly, who leads with his heart.

This is the final production of our 24-25 season. I hope that we've left you with some unforgettable experiences, and that you're planning to join us next season for what promises to be another year of exhilaration, challenge, and joy.

Yours,

David Muse
Artistic Director

For a note from
the dramaturg and
more background
information on
Wipeout please visit



[studiotheatre.org/
wipeout](http://studiotheatre.org/wipeout)

STUDIO THEATRE

DAVID MUSE
ARTISTIC DIRECTOR

**REBECCA ENDE
LICHTENBERG**
EXECUTIVE DIRECTOR

PRESENTS

WIPEOUT

BY
AURORA REAL DE ASUA

DIRECTED BY
DANILO GAMBINI

Wipeout was first produced as a National New Play Network Rolling World Premiere by Rivendell Theatre Ensemble (Chicago, IL), B Street Theatre (Sacramento, CA), and Gloucester Stage Company (Gloucester, MA). For more information, please visit nnpn.org.



The Director and/or Choreographer is a member of the Society of Stage Directors and Choreographers, Inc., an independent national labor union.



The scenic, costume, lighting, and sound designers in LORT Theatres are represented by United Scenic Artists, Local USA829 of the IATSE.

This Theatre operates under an agreement between the League of Resident Theatres and Actors' Equity Association, the Union of Professional Actors and Stage Managers in the United States.

SET DESIGN
JIMMY STUBBS

COSTUME DESIGN
VALÉRIE THÉRÈSE BART

LIGHTING DESIGN
ANDREW R. CISSNA

SOUND DESIGN
**BAILEY TRIERWEILER &
UPTOWNWORKS**

PROJECTION DESIGN
LUIS GARCIA

FIGHT AND INTIMACY CONSULTANT
JENNY MALE

DRAMATURG
ADRIEN-ALICE HANSEL

PRODUCTION STAGE MANAGER
JOHN KEITH HALL*

ASSISTANT STAGE MANAGER
DELANEY CLARE DUNSTER*

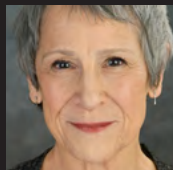
DIRECTOR OF PRODUCTION
JEFFERY MARTIN

TECHNICAL DIRECTOR
RHIANNON SANDERS

CASTING BY
**ALAINE ALLDAFFER & LISA
DONADIO, CSA**

UNDERWRITTEN BY
TERESA AND DAN SCHWARTZ

CAST



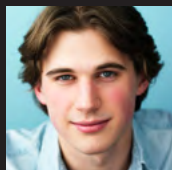
**CLAUDIA
NAOMI
JACOBSON***



**GARY
KATHERINE
CORTEZ***



**WYNN
DELISSA
REYNOLDS***



**BLAZE
ALEC LUDACKA***

UNDERSTUDIES

**CLAUDIA
CAREN ANTON***

**WYNN AND GARY
ALISON BAUER**

**BLAZE
DREW SHARPE**

SETTING: The Pacific Ocean, off Cowell's Beach, Santa Cruz, CA. April. 11:06 am

SPECIAL THANKS

Elidia Gambini, Neo Avila, Greg, Mumi, Skyler, Greg, Gerg



*Member of Actors' Equity Association, the Union of Professional Actors and Stage Managers in the United States

The videotaping or making of electronic or other audio and/or visual recordings of this production and distributing recordings or streams in any medium, including the internet, is strictly prohibited, a violation of the author(s)'s rights and actionable under United States copyright law.

PLAYWRIGHT



AURORA REAL DE ASUA

is a playwright, filmmaker, and performer. *Wipeout* received a rolling world premiere through the New Play Network with productions at Rivendell Theatre Ensemble, B Street Theatre, and The Gloucester Stage Company. *Wipeout* was also developed at the Manhattan Theatre Club (MTC), Williamstown Theatre Festival, The New Harmony Project, and The Old Globe. Her play *WET* was part of the Scratchpad Series at The Playwrights Realm in 2022. She is currently commissioned by MTC and South Coast Repertory. Her short film *Heartsong* debuted on Short of the Week and screened at various festivals. It is available to stream on Mitú.tv. Aurora originated a role in David Auburn's adaptation of *The Adventures of Augie March* at Court Theatre in Chicago. She holds a B.A. in Theatre from Northwestern University and an MFA in film from Columbia University.

DIRECTOR



DANILO GAMBINI

is a director and producer originally from São Paulo, Brazil. He is currently the Associate Artistic Director at Studio Theatre. Recent directing credits include the world premiere of *Ni Mi Madre* at Rattlestick Theater (OBIE Award Winner, Drama Desk Nomination, NYT Critic's Pick), as well as *The Rake's Progress* and *Iolanta* at Yale Opera. Upcoming engagements include *The Heart Sellers* at Studio and *A Case for the Existence of God* at Mosaic Theater Company. His production of *Agreste (Drylands)* at Spooky Action Theater received six Helen Hayes Awards Nominations, including Outstanding Director. Other credits include the world premiere of the musical *Sabina* at Portland Stage; *Fun Home*, *The Tempest*, and *Rock Egg Spoon* at the Yale School of Drama; and *Agreste (Drylands)*, *Bakkhai*, *The Swallow and the Tomcat*, and *Truck* at Yale Cabaret. Operas include *Don Giovanni*, *Ariadne auf Naxos*, and *Eugene Onegin* at Teatro São Pedro. Before Studio Theatre, he was the Associate Artistic Director at Rattlestick Theater, Co-Artistic Director at Yale Summer Cabaret, a member of Roundabout Directors Group, and of TPOC—Theater Producers of Color. He has developed work at The Public Theater, Joe's Pub, The Old Globe, Ars Nova, Milwaukee Rep, Woolly Mammoth Theatre Company, Chautauqua Opera, Gulfshore Playhouse, and Latinx Playwrights Circle, amongst others. Danilo holds an MFA in Directing from the Yale School of Drama and a BFA in Film and Television and an artist diploma as an actor from the School of Dramatic Art, both at the University of São Paulo. danilogambini.com

2024-2025 SEASON SPONSORS

SUSAN AND DIXON BUTLER
SHERYL AND RICK DONALDSON
DR. MARK EPSTEIN AND
AMORETTA HOEBER
JINNY AND MICHAEL GOLDSTEIN
SARI HORNSTEIN
ALBERT G. LAUBER AND
CRAIG HOFFMAN
PAUL MASSEY AND JOSH O'HARRA
LOU MAZAWAY
JOAN AND DAVID MAXWELL

CRAIG PASCAL
BELINDA AND GREGORY NIXON
KATY KUNZER ROSENZWEIG AND
PAUL ROSENZWEIG
TERESA AND DAN SCHWARTZ
STEVE AND LINDA SKALET
BOBBI AND RALPH TERKOWITZ
MARK TUSHNET AND
ELIZABETH ALEXANDER
AMY WEINBERG AND
NORBERT HORNSTEIN

STUDIO INFINITUM



Kate Eastwood Norris
and Holly Twyford in
Summer, 1976. Photo
by Margot Schulman

Did you know that Studio Theatre accepts gifts through a variety of planned giving platforms? Studio Infinitem is Studio's legacy program recognizing members who have designated Studio Theatre as the beneficiary of a planned gift.

**TO DISCUSS MORE ABOUT STUDIO INFINITEM,
CONTACT BIANCA BECKHAM, DIRECTOR OF DEVELOPMENT,
AT BBECKHAM@STUDIOTHEATRE.ORG OR AT 202.919.3717.**



NAOMI JACOBSON (Claudia) appeared at Studio Theatre in *Heroes of The Fourth Turning*, *The Children*, and *The Remains*. She is an Affiliated Artist at Shakespeare Theatre Company and a Company Member at Woolly Mammoth Theatre Company. She's performed at most of the DC Equity theatres including The Kennedy Center, Arena Stage, Signature Theatre, Round House Theatre, Theater J, Folger Theatre, and Ford's Theatre. She's traveled to the Guthrie Theatre, the Goodman Theatre, Cleveland Play House, Milwaukee Rep, Baltimore Center Stage, Cincinnati Playhouse in the Park, Indiana Repertory Theatre, Arizona Theatre Company, Village Theatre in Seattle, Maltz Jupiter, and the Berkshire Theatre Festival. Naomi has appeared in independent films, network TV shows, and done voice over work for NPR, PBS, Discovery Channel, and the Smithsonian. She's received three Helen Hayes Awards, numerous nominations, the Lunt-Fontanne Fellowship, the Anderson-Hopkins Award, and a DC Arts Individual Artist grant. Full resume at naomijacobson.com.

DELISSA REYNOLDS (Wynn)'s theatre credits include *The Last Days of Judas Iscariot* at La MaMa and The Actors Studio, *Our Lady of 121st Street* at The Actors Studio, *New Age* at Milwaukee Rep, *To Kill a Mockingbird* at Penobscot Theatre Company, and *A Lesson Before Dying* at Studio Arena Theatre and Geva Theatre. Television credits include *Elsbeth*, *The Good Fight*, *FBI: Most Wanted*, and *Madam Secretary* (CBS); *Diarra From Detroit* (BET); *Wu-Tang: An American Saga* (Hulu); *Orange is the New Black* and *Luke Cage* (Netflix); *Manifest*, *Law & Order: SVU*, *The Beat*, and *Deadline* (NBC). Film credits include *A Thousand and One*, *Muzzle*, *2 Lives in Pittsburgh*, *Magic Hour*, and *The Day the Ponies Come Back*. Ms. Reynolds is a recipient of the American Theatre Hall of Fame "Emerging Theatre Artist" fellowship (2022) and is a board member and lifetime member of The Actors Studio. delissareynolds.com. On social media @delissar (Instagram, Facebook).

KATHERINE CORTEZ (Gary) is an actor and a playwright. New York theatre credits include appearances on and Off Broadway including May in *Fool for Love*, Nina in *The Seagull* with Richard Thomas and Judd Hirsch at The American Place, and as Holly in *Foxfire*, first at the Guthrie Theatre and then on Broadway at The Ethel Barrymore. Television credits include *NCIS* and *The Equalizer* (CBS), *Thirtysomething* (ABC), *L.A. Law* (NBC), and numerous television movies. Films include *Luckiest Girl Alive*, *Sticky Fingers*, *Fishbowl California* and a star turn in the short film *Chance of Rain*. Her playwrighting credits include *Mama Sang the Blues*, *The Hunting*, *A Quadrimonial*, and most recently, *River Time*, produced in Los Angeles as a project by The Actors Studio, where she has been appointed Co-Artistic Director.

ALEC LUDACKA (Blaze) is an NYC-based actor and singer making his Studio Theatre debut. A Chicago native, he graduated with a BFA from Carnegie Mellon University in Pittsburgh in 2023. His theatre credits include *The Perfect Game* at Theatre Row, *Stupid Boring Straight People* at The Players Theatre, *Hard Road to Heaven* (a world premiere country musical) at the Bucks County Playhouse, *Kinky Boots* and *The Drowsy Chaperone* at the Pittsburgh CLO, and *Preludes* and *Godspell* at Carnegie Mellon. Alec can be seen in Billy Porter's directorial film debut, *Anything's Possible*, on Amazon Prime and *Mayor of Kingstown* on Paramount+. He is also a scholarship winner for the National Society of Arts and Letters Musical Theatre Competition. On social media @classic_al_2000 (Instagram, X/Twitter, and TikTok).

PRODUCTION

JIMMY STUBBS (Set Design) is a NYC-based set designer from Gaithersburg, MD. Recent design credits include *Henry IV* at Theatre for a New Audience, *A Funny Thing Happened on the Way to the Forum* at Signature Theatre (DC), *Pipe Dream* at Berkshire Theatre Group, and *The Band's Visit* at the Huntington Theatre Company. Associate design credits include *Sunset Blvd.* and *The Hills of California* on Broadway, *Turandot* with the Washington National Opera, and *Carmen* at Glyndebourne Festival Opera. Jimmy holds a B.A. in Theatre from the University of Maryland, College Park and an MFA in Set Design from the David Geffen School of Drama at Yale. He is a proud member of United Scenic Artists, Local 829. On social media @jimmystubbsdesign.

VALÉRIE THÉRÈSE BART (Costume Design) is based in New York. Her design work includes new works, world premieres, adaptations, and reclaimed classic narratives. Some of her favorite Off Broadway projects include the world premieres of *Poor Yella Rednecks* at Manhattan Theatre Club / South Coast Repertory, and *Vanity Fair* at Pearl Theatre, as well as the New York premiere of *Little Women* at Primary Stages. Her regional credits include *Birthday Candles* (scenic designer) at Cincinnati Playhouse in the Park, *Jane Eyre* at Alley Theatre, *Into the Woods* at the Guthrie Theater, *Vietgone* at Alley Theatre / Denver Center, and the world premieres of *It's Christmas, Carol!* at Oregon Shakespeare Festival; *The Great Leap* at Denver Center / Seattle Repertory Theatre; and *Pop!* (scenic designer) at Yale Repertory Theatre. Opera credits include the world premieres of *The Big Swim* at Houston Grand Opera and *A Thousand Acres* at Des Moines Metro Opera. valeriebart.com

ANDREW R. CISSNA (Lighting Design) is based in Washington, DC where he teaches

lighting and multimedia design and technology at the University of Maryland. At Studio Theatre he has designed *People, Places & Things*; *Queen of Basel*; *Murder Ballad*; *Silence! The Musical*; and *I Wanna Fucking Tear You Apart*. Other DC credits include *John and Sex with Strangers* at Signature Theatre, *Cat on a Hot Tin Roof* at Round House Theatre, and *1984* at Catalyst Theatre Company, all of which received Helen Hayes Award nominations. Regionally, Andrew has designed *Jitney* at Cincinnati Playhouse in the Park, *Noises Off* and *Harvey* at Milwaukee Rep, *Seminar* and *Native Gardens* at PlayMakers Repertory Company, *God of Carnage* at the Cape Playhouse, and *Noises Off* at Perseverance Theatre.

BAILEY TRIERWEILER; DANIELA HART; NOEL NICHOLS (Sound Design) are UptownWorks, a collaborative design team specializing in theatre, film, podcasts and installations. Design highlights include *The Scenarios* and *Problems Between Sisters* at Studio Theatre; *Becoming Eve* with New York Theatre Workshop; *Grandiloquent* at the Lucille Lortel Theatre; *Franklinland* and *Las Borinqueñas* at Ensemble Studio Theatre; *I'm Not Your Perfect Mexican Daughter* at Denver Center (DCPA); *Dangerous Days* at Miami New Drama; *Murder on the Orient Express* at Syracuse Stage; *FIVE: The Parody Musical* at Theatre 555; *Lady Day at Emerson's Bar and Grill* and *Fires in the Mirror* at Baltimore Center Stage; *Avaaz* at South Coast Repertory, DCPA, and Olney Theatre Center; and *Black Odyssey* at Classic Stage Company. This design was led by Bailey Trierweiler (btsounddesign.com), Daniela Hart (uptownworksny.com), and Noel Nichols (noelnicholsdesign.com).

LUIS GARCIA (Projections Design; he/él) is a Peruvian-American lighting and video designer based in the DMV who previously worked at

Studio on *Espejos: Clean*. His design credits include *Anastasia* at the Fulton Theatre, *Professor Woland's Black Magic Rock Show* at Spooky Action Theater, *Beautiful: The Carole King Musical* at Maine State Music Theatre, and *A Bicycle Country* at the University of Maryland. He recently served as the associate video designer for the world premiere of *John Wilkes Booth: One Night Only!* at Baltimore Center Stage and was the Watchout programmer for *Frankenstein* at Shakespeare Theatre Company and *Here There Are Blueberries* at New York Theatre Workshop. He received his MFA in Lighting and Media Design from the University of Maryland, College Park. luisgtech.com. On social media at [@luis.garcia.design](https://www.instagram.com/@luis.garcia.design) (Instagram).

JENNY MALE (Fight & Intimacy Consultant; she/her) is a fight director and movement/intimacy consultant in the DC/Baltimore area. Her theatre credits include *Espejos: Clean*; *Love, Love, Love*; and *At the Wedding* at Studio Theatre, *Little Shop of Horrors*; *The Trip to Bountiful*; *Guys and Dolls*; and *Shout Sister Shout!* at Ford's Theatre, *Newsies*; *Catch Me If You Can*; and *Celia and Fidel* at Arena Stage, *Once on This Island*; *Moon Man Walk*; *Desperate Measures*; and *The 39 Steps* at Constellation Theatre Company, and *E2*; *True West*; *The Fantasticks*; *Ghost/Writer*; and *Falsettos* at Rep Stage. Jenny has also worked with Everyman Theatre, Washington Stage Guild, Imagination Stage, Factory 449, and Adventure Theatre MTC. She holds an MFA in Theatre Pedagogy from Virginia Commonwealth University and is Associate Professor of Theatre at Howard Community College.

ADRIEN-ALICE HANSEL (Dramaturg; she/her) is the Literary Director at Studio, where she has dramaturged the world premieres of *The Scenarios*, *Problems Between Sisters*, *Good Bones*, *John Proctor is the Villain*, *I Hate*

it Here, *Queen of Basel*, *Red Speedo*, and *Lungs*, among others, as well as productions of *Paradise Blue*; *Summer, 1976*; *Exception to the Rule*; *The Colored Museum*; *Fat Ham*; *Fun Home*; *English*; *Curve of Departure*; and *Wig Out!*; among many others. Prior to joining Studio, she spent eight seasons as a member of and then running the Literary Department at the Actors Theatre of Louisville and its Humana Festival of New American Plays. She is the co-editor of eight anthologies of plays from Actors Theatre and editor of 13 editions of plays through Studio. Adrien-Alice holds an MFA from the Yale School of Drama.

JOHN KEITH HALL (Production Stage Manager) returns for his 50th show at Studio with *Wipeout*. His Studio credits include *Downstate*; *Summer, 1976*; *Exception to the Rule*; *The Colored Museum*; *At the Wedding*; *Espejos: Clean*; *Fun Home*; *Bad Jews*; *Choir Boy*; *Water by the Spoonful*; *Tribes*; *Torch Song Trilogy*; *4000 Miles*; *In the Red and Brown Water*; *The History Boys*; and *The Road to Mecca*. Other DC area credits include productions at Woolly Mammoth Theatre Company, Olney Theatre Center, Signature Theatre, and The Kennedy Center. His regional credits include more than 40 productions as Resident Stage Manager at the Barter Theatre as well as Shadowlands Stage, Virginia Musical Theatre, and Contemporary American Theatre Festival.

DELANEY CLARE DUNSTER's (Assistant Stage Manager; she/her) recent productions include *Downstate*; *Exception to the Rule*; *Love, Love, Love*; *Fat Ham*; *Good Bones*; *English*; and *People, Places & Things* (ASM for all) at Studio Theatre; *Bob & Jean*; *A Love Story* (ASM) at Arizona Theatre Company; *Prayer for the French Republic* (PSM replacement) and *Hester Street* (ASM) at Theater J; *Ken Ludwig's Moriarty* (ASM)

at Arrow Rock Lyceum Theatre; *Joseph... Dreamcoat*, *American Mariachi*, and *The Marvelous Wonderettes* (ASM for all) at Alabama Shakespeare Festival; and *Happy, Proof*, *Lady Day at Emerson's Bar and Grill*, and *Four Seasons* (PSM) at Centre Stage. She received her BFA in Stage Management from Webster University. takefiveopportunities.org. On social media @delaneyclaredunster (Instagram).

TROY C. JOHNSON (Assistant Director) is a writer, director, theatre technician, and photographer who was born and raised in DC. He has the honor of being a part of Studio's entire 2024-2025 season. A few of his other credits include all of The Keegan Theatre's 2024-2025 season (*The Woman in Black*, *An Irish Carol*, *Hand to God*, *#Charlottesville*, *Falsettos*, *Apropos of Nothing*), *Cracking Zeus* at Spooky Action Theater, *Andy Warhol in Iran* at Mosaic Theater Company, *Akira Kurosawa...Yogurt* at Woolly Mammoth Theatre Company, *Head Over Heels* at

Constellation Theatre Company, *hang* at 1st Stage, and *The Secret in the Wings* at The Theatre Lab. Troy is a proud Art Institute for Creative Advancement (AICA) alum. On social media @johnsonctroy (Instagram).

ALAINE ALLDAFFER and **LISA DONADIO** are currently the Casting Directors for Playwrights Horizons, with 15 Artios nominations and four wins for casting. Credits include *Stereophonic*, *A Strange Loop*, *Grey Gardens*, and *Clybourne Park*, Playwrights Horizons projects that transferred to Broadway. Additional credits include *Circle Mirror Transformation* at Playwrights Horizons (Drama Desk and Obie Awards for Best Ensemble) and *The Flick* at Playwrights Horizons and Barrow Street Theatre. Television credits include *The Knights of Prosperity* (aka *Let's Rob Mick Jagger*) (ABC). Associate credits include *Ed* (NBC) and *Monk* (USA Network).

For additional bios and more information visit: studiotheatre.org/wipeout

PRODUCTION STAFF

ASSISTANT DIRECTOR
TROY C. JOHNSON

SURF CONSULTANT
ANITA HARRINGTON

PROPERTIES SUPERVISOR
AMY KELLETT

SCENIC CHARGE
MEG ZETTEL

CARPENTER
ADELE FELDBERG

PROJECTION AND
SOUND BOARD OPERATOR
BRIAN JOHNKE

PRODUCTION MENTAL HEALTH
SUPPORT
SARA MINDEL, LICSW

LIGHT BOARD PROGRAMMER
CLARISSA BRIASCO-STEWART

LIGHT BOARD OPERATOR
CONNOR SKALITZKY

COMPANY MANAGEMENT
ASSOCIATES
**JULIANA SHRIVER AND
ELIZA SNIPES**

PROGRAM GRAPHIC DESIGNER
BILL GEENEN

WIPEOUT COMMUNITY PARTNERS

SURFRIDER DC
dc.surfrider.org/

THE DC CENTER
thedccenter.org/aging/



STUDIO THEATRE ANNUAL BENEFIT

A NIGHT AT THE PARADISE

THANK YOU TO OUR 2025 BENEFIT SPONSORS

BENEFIT SPONSORS

Marc Albert
Cindy and Mark Aron
Rob Batarla
Nan Beckley
The Honorable Ann Brown
Susan and Dixon Butler
Trudy Clark
Liz and Tim Cullen
Sheryl and Rick Donaldson
Karen Doyme
Mark Edelman
Mona and Mark Elliot
Mark Epstein and
Amoretta Hoeber
Mark and Hope Foster
Wendy and William Garner
Jinny and Mike Goldstein
Susan L. Gordon
John and Meg Hauge
Pamela and Richard Hinds
Kay Kendall and Jack Davies
Rebecca Klemm
Dianne and Herbert Lerner
Renee Matalon and
Stephen Marcus
Virginia McArthur
Howard Menaker and
Patrick Gossett
Larry and Joan Naake
Carl and Undine Nash
Belinda and Greg Nixon
Craig Pascal
Jamie Pate
Jennifer Randolph

Katy Kunzer Rosenzweig and
Paul Rosenzweig
Carol Schwartz and
Robert Tyler
Teresa and Dan Schwartz
Barney Shapiro
Bobbi and Ralph Terkowitz
Terry Theologides and
Deb Rodriguez
Bob Tracy and Marty Gross
Mark Tushnet and
Elizabeth Alexander
Amy Weinberg and
Norbert Hornstein

CORPORATE SPONSORS

Arent Fox LLP
Saks Fifth Avenue
Chevy Chase
Sandy Spring Bank
Sotheby's International Realty

DONATIONS \$500+

Anonymous
Nan Beckley
Cathy Bendor
Craig Benson
Ann Binstock
Andrea Carter
Nancy Chasen
Trudy Clark
Liz and Tim Cullen
Kendra Davis
Susan L. Gordon
Sari Hornstein

Kay Kendall and Jack Davies
Rebecca Klemm
Albert Lauber and
Craig Hoffman
James Leonard
Dianne and Herbert Lerner
Renee Matalon and
Stephen Marcus
Lou Mazawey
Lori McFarling
Vandana Narang
Judy Pomeranz
Vicken Poochikian and
Irene Roth
Dr. Timothy Price
Jennifer Randolph
Nicole and Benjamin Rippeon
Kevin Robbins
Katy Kunzer Rosenzweig and
Paul Rosenzweig
Mark Schamel
Teresa and Dan Schwartz
Barney Shapiro
Steven and Linda Skalet
Terry Theologides and
Deb Rodriguez
Amy Weinberg and
Norbert Hornstein
Ari Weisbard
Elizabeth (Barry) White
Melissa Wiley
Tessa Van Der Willigen
Ginny Wydler



LEADERSHIP

DAVID MUSE
ARTISTIC DIRECTOR

REBECCA ENDE LICHTENBERG
EXECUTIVE DIRECTOR

BOARD OF TRUSTEES

Rob Batarla
CHAIR

Karen Doyne
VICE CHAIR

Navroz Gandhi
TREASURER

Belinda Elvan Nixon
SECRETARY

Marc Albert

Jeremías Alvarez

Susan L. Butler

Rick Donaldson

Dr. Mark Epstein

Mark W. Foster

Yinuo Geng

Jinny Goldstein

Susan L. Gordon

John Guggenmos

Renee Matalon

Dr. Dayna Matthew

Larry Naake

Tuknekah Noble

Jamie C. Pate

Dusty Riddle

Katy Kunzer Rosenzweig

The Honorable

Carol Schwartz

Teresa Schwartz

Luz Blancas Sevak

Barney Shapiro

Steven A. Skalet

Bobbi Terkowitz

Terry Theologides

Robert Tracy

Amy Weinberg

EX-OFFICIO

David Muse

Rebecca Ende Lichtenberg

FOUNDING ARTISTIC DIRECTOR

Joy Zinoman

FELLOWS-IN-RESIDENCE PROGRAM

The Studio Fellows-in-Residence program prepares future artists and administrators for a successful career in the arts through a rigorous, hands-on training experience over the course of a full theatrical season.

PROGRAM SPONSORS

SUSAN AND DIXON BUTLER

SARI HORNSTEIN

TERESA AND DAN SCHWARTZ

AMY WEINBERG AND NORBERT HORNSTEIN

With additional support from Paul M. Angell Family Foundation, The Nora Roberts Foundation, Jeffrey Bauman and Linda Fienberg, and Herb and Dianne Lerner.

ARTISTIC**DANILO GAMBINI**

Associate Artistic Director

ADRIEN-ALICE HANSEL

Literary Director

Commissioned Artists

AK PAYNE**MARGOT BORDELON****RAYMOND O. CALDWELL****SARAH DELAPPE****ERIKA DICKERSON-
DESPENZA****MIRANDA HAYMON****MOLLY SMITH METZLER****TYNE RAFAELI****TAYLOR REYNOLDS****GEOFF SOBELE**

Readers Circle

MALAIKA FERNANDES**FRANCESCA SABEL****PRODUCTION****JEFFERY MARTIN**

Director of Production

CLARICE BERARDINELLI

Rentals & Events Manager

MADISON BAHRAssistant Production
Manager**BRANDEE MATHIES**

Costume Shop Manager

CHRISTION JONESLighting & Sound
Supervisor**RHIANNON SANDERS**

Technical Director

SARAH MCCARTHY

Master Carpenter

MIGUEL GOMEZ

CFP Production Assistant

DEVELOPMENT**BIANCA BECKHAM**

Director of Development

HANNAH HESSEL RATNERAssociate Director of
Development**DARCY FOWLER**Development Operations
Manager**EMMA CUMMINGS**

Donor Relations Coordinator

**GENERAL
MANAGEMENT****KATHRYN HUEY**Director of Finance &
Administration**AMANDA ACKER**

Business Director

CORY MCCONVILLE

Operations Manager

CARMEN PIERCEManagement &
HR Coordinator**MARKETING AND
COMMUNICATIONS****HILARY JUDIS**Director of Marketing and
Communications**REBECCA FISCHLER**Associate Director of Marketing
and Communications**SHANE OLIVER**

Audience Services Director

GABBY WOLFE

Marketing Insights Manager

AVI LITTKY

Digital Marketing Associate

JEFF KLEIN

Box Office Supervisor

Lead Box Office Associates

MARTHA HAHN**SYDNE LYONS****CHARLOTTE NEWTON**

Box Office Associates

TYMETRIAS BOLDEN**MAYA BROWN****DAY FULLER****ANNA LONGENECKER**

Lead House Managers

KECHE ARRINGTON**BRINDEN BANKS****DANIEL BINDER****MARCEL HARTLEY****BRIAN KLOSE****STEPHANIE LANDRY****KAIYA LYONS****GAELYN SMITH****JAIDA GILLESPIE**

House Managers

SAVANNAH BLACKWELL**ARYSSA DAMRON****SPIKE DICKERSON****DONTA HENSLEY****AUDRA JACOBS****MARCEL HARTLEY****LAYLA NABAVI****BOB REEG****ERIN SHORT****CHRISTIAN MORENO****MCKENNA CANTY****2024-25 FELLOWS****BLAKE BERGGREN**PRODUCTION AND EVENTS
FELLOW**CLARISSA BRIASCO-
STEWART**

ELECTRICS FELLOW

NORA GEFFEN

DIRECTING FELLOW

GURSIMRAT KAURARTISTIC PRODUCING
FELLOW**ADRIAN KNAPPERTZ**SOUND AND
PROJECTION FELLOW**BRIAN MARTINEZ**STAGE MANAGEMENT
FELLOW**ISABELLA PEDRAZA**TECHNICAL DIRECTION
FELLOW**ANASTASIYA RAKOVA**

BUSINESS FELLOW

JULIANA SHRIVERCOMPANY MANAGEMENT
FELLOW**ELIZA SNIPES**MARKETING AND
COMMUNICATIONS FELLOW

THANK YOU TO OUR SUPPORTERS

ARTISTIC DIRECTOR'S CIRCLE

Cindy and Mark Aron
Jeffrey Bauman and Linda Fienberg
Nan Beckley
Susan and Dixon Butler
Trudy H. Clark
Sheryl and Rick Donaldson
Karen Doyné
Dr. Mark Epstein and Amoretta Hoeber
Hope and Mark Foster
The Galena-Yorktown Foundation
Wendy and William Garner
Bennett Goldberg Brown & Danielle Ellis McDonald
Jinny and Mike Goldstein
Susan L. Gordon
John Guggenmos and Timur Loynab
John and Meg Hauge
Donald E. Hesse and Jerrilyn Andrews
Sari Hornstein
Rick Kasten
Arlene and Robert Kogod
Judge Albert Lauber and Prof. Craig Hoffman
Herb and Dianne Lerner
Paul Massey and Josh O'Harra
Joan and David Maxwell
Lou Mazawey
Belinda and Gregory Nixon
Craig Pascal
Jamie Pate
Kathleen Kunzer and Paul Rosenzweig
Samantha Saul
Teresa and Dan Schwartz
Steve and Linda Skalet
Andy and Ed Smith
Bobbi and Ralph Terkowitz
Terry Theologides and Deb Rodriguez
Mark Tushnet and Elizabeth Alexander

Amy Weinberg and Norbert Hornstein

Ovation Circle

Marcel Albert and Stephen Tschida
Dr. Stewart Aledort and Dr. Sheila Rogovin
Alan Asay and Mary Sturtevant
Rob Batarla
Bernard Family Foundation
Robin Berrington
Peter Bieger and Demian Gaiteri
Lynn Bonde and Richard Lehmann
The Honorable Ann Brown
Cory and Rachel Capps
John Chester and Betty Shepard
Louis and Bonnie Cohen
Margery Doppelt and Larry Rothman
E&B Family Trust
Anne and Marc Feinberg
Gerard Fiala
Trudy Fleisher
Navroz and Perinaaz Gandhi
George Wasserman Family Foundation
Graham Stretch Family Foundation
Greene-Milstein Family Foundation
Frona Hall
Larry Haller and Sherry Marts
Kirby Heller and Steve Dennett
Richard and Pamela Hinds
Linda Lurie Hirsch
John Horman
Lynne and Joseph Horning
Gale Anne Hurd
Hal Jones and Anne-Lise Auclair-Jones
John Keator and Virginia Sullivan
Helen and David Kenney
Kyle Kerr
Arlene and Martin Klepper
Judy and Peter Blum Kovler Foundation
Barry Kropf
Vinca and David LaFleur
Stephen A. Saltzburg and Susan Lee
The Lewis Butler Foundation
Linwei Li
B. Thomas Mansbach
Renee R. Matalon and Stephen H. Marcus
Dan and Karen Mayers
The Morningstar Foundation
Morrissette Family Foundation
Zell Murphy and Mark Wasson
Ken and Margaret Muse
Larry and Joan Naake
Carl and Undine Nash

Tukneka Noble
The Nussdorf Family Foundation
Sandra and Gilbert Oken Foundation
Daniel Pattenden
Merrie Pearl and Dylan Slotemaker
Carl and Margaret Pfeiffer
Daniel Pink
Michael and Penelope Pollard
Judith D. Pomeranz
Ane Powers
Lutz Alexander Prager
Peter S. Reichertz
Jennifer Robb
The Henry and Susan Rose Family Fund
Sara Rosenbaum and Dan Hawkins
Steven M. Rosenberg and Stewart C. Low III
Irene Roth and Vicken Poochikian
Dr. April Rubin and Mr. Bruce Ray
The Honorable Carol Schwartz and Robert Tyler
Barney Shapiro
Linda and Stanley Sher
Aimee Smart and Shefa Gordon
Spoor Family Fund
Ed Starr and Marilyn Marcossion
Robert Tracy and Marty Gross
Kazuko and Yoshine Uchimura
Anne and Ernest Wallwork
Gloria Weissberg
Beverly and Christopher With
Mary and Michael Young
Judy and Leo Zickler

Open Circle

Linda Adams
Dean Amel and Terry Savella
Marcia and Larry Arem
Liz Barratt-Brown
R. Joseph Barton
Scott Douglas Bellard
Allan and Michele Berman
Jessica Berman and Michael Fernandez
Loren and Peter Brandman
Joe and Sue Bredekamp
Keith and Kristen Burnham
Blain and Peg Butner
E S Carton
Jessica Case
Dr. Morris J. Chalick
Cecilia Chandler
Nancy Chasen and Don Spero
Cathi Cohen
Brian Collins
Will and Carol Cooke

David Cooper and Stephen Nash
 Drew Courtney and Nick Berning
 Nancy Crisman
 Michael Crosswell
 Johanna Cummings
 Richard and Janet Dante
 Laurie Davis and Joseph Sellers
 Nancy Deck and Michael Gross
 John Driscoll
 Ellen and Fred Ende
 Michael Klein and Joan Fabry
 Wayne Farmer
 The Manny and Ruthy Cohen
 Foundation
 James A. Feldman and
 Natalie Wexler
 Jill A. Fields
 Leo S. Fisher & Susan J. Duncan
 Gift Fund
 Sarah Hope Franks and
 Michael O. Moore
 Amy C. Gilbert and Steven Newpol
 Joyce and Richard Gordon
 Sally W. Gresham
 John G. Guffey
 Gail Gulliksen
 Jack Hairston Jr.
 Bonnie and Alan Hammerschlag
 Gail McGreevy Harmon
 William & Wendell Hausdorff
 James Heegeman
 Margaret Freeston Hennessey
 Melane K. Hoffman
 Marvene Horwitz
 John and Gail Howell
 Jason Johnston
 Leonade D. Jones
 Thomas Joseph
 Terrance Kalahurka
 Jeremy and Marnie Kaplan
 Robert L. Kimmins
 Jan Klein
 Lauren Kogod and David Smiley
 Leslie Kogod
 Patricia and John Koskinen
 Dr. and Mrs. William Kramer
 Carrie Langsam
 Robert Lanman and Debra Bergoffen
 Chad Lash & Caryn Wagner
 James Leonard
 Janet Lewis
 Romana Li and Bruce Bartels
 Lifland-Radmer Fund

Eve A. Lilley
 Shawn C. Helm and
 J. Thomas Marchitto
 Dan and Susan Mareck
 Martha Washington Straus-Harry H.
 Straus Foundation
 Lynne Martin
 Dayna Bowen Matthew
 Anne Mayerson
 Bruce and Mara Mayor
 David McKinney
 Mark Meister and Carla Krivak
 Eddie Adkins & Jeff Mendell
 Jeffrey Menick
 Lisa Miller
 Ellen and Richard Miller
 Jane Molloy
 The Mufson Family Foundation
 Lou and Sherry Nevins
 Martha Newman
 Ms. Jeanie Osburn
 Lynn Parseghian and
 Nathaniel E. Cohen
 Linda and Peter Parshall
 Stan Peabody
 Charles Pflieger
 Teresa Plotkin
 Michael and Deborah Poliner
 Murray Pollack
 Timothy Price
 Mrs. Ruth Lammert-Reeves and
 Mr. Roger H. Reeves
 Dusty Riddle and Daniel Aune
 Julie F. Rios
 Julie Rios
 Jim Ritter
 Lucinda Romberg
 Lynn Rothberg
 Frank Sammartino and Ellen Starbird
 Christina Samson
 Evelyn Sandground & Bill Perkins
 Linda B. Schakel
 Mady Schichor
 The Schlossberg Family Fund
 Richard Tucker Scully and
 Lee A. Kimball
 Amit Sevak and Luz Blancas Sevak
 Jennifer Shea and Peter Bruns
 John and Ann Skeele
 Lauren Kogod and David Smiley
 Carl Wayne Smith
 Cecile Srodes
 Suzanne Sketkevych

David Stevens and Linda Wymbs
 Jeanne Stovroff
 Thomas Strikwerda and
 Donna Stienstra
 Aileen and Jack Sullivan
 Grant P. and Sharon R. Thompson
 Drs. Chuck & Cécile Toner
 Steve Verna
 Eric R. and Laura M. Wagner
 Scott Barash and Gayle Wald
 Elisse Walter and Ronald Stern
 Kip Weissman and Kathy Balog
 Carolyn L. Wheeler
 Elizabeth B. White
 Jack and Sue Whitelaw
 Annelie Wilde
 Jeffrey Wilder
 Melissa Wiley
 Sandy and Jon Willen
 Misti Mukherjee and Mike Williams
 Robert I. Wise
 Allison and Doug Zabransky
 Margot Lurie Zimmerman

CORPORATE, FOUNDATION, AND GOVERNMENT SUPPORT

William S. Abell Foundation, Inc.
 Dallas Morse Coors Foundation for
 the Performing Arts
 DC Commission on the Arts
 and Humanities
 Graham Holdings Company
 The Max and Victoria Dreyfus
 Foundation
 Milton and Dorothy Sarnoff
 Raymond Foundation
 The Morris and Gwendolyn Cafritz
 Foundation
 Morgan Fund at Seattle Foundation
 National Capital Arts and Cultural
 Affairs Program and the US
 Commission of Fine Arts
 National Endowment for the Arts
 The Nora Roberts Foundation
 Paul M. Angell Family Foundation
 Share Fund
 Shapiro Family Foundation
 Shubert Foundation

*In memoriam

This list represents contributions of \$500 or more made to the annual fund as of May, 30 2025. Every effort has been made to ensure the accuracy of this listing. For more information, please contact the Development Department at 202.919.3712.

STUDIO 25/26 SEASON

AS A SUBSCRIBER,
YOU'LL BE THE
FIRST IN LINE FOR
TICKETS TO THE
MOST EXPLOSIVE
SEASON OF
THEATRE IN DC.

LOCK IN YOUR
SEATS NOW,
BEFORE TICKETS
START TO
SELL OUT.

THE HEART SELLERS

BY LLOYD SUH
DIRECTED BY DANILO
GAMBINI
SEPTEMBER 2025

MOTHER PLAY

A PLAY IN FIVE EVICTIONS

BY PAULA VOGEL
DIRECTED BY
MARGOT BORDELON
NOVEMBER 2025

OCTET

BOOK, MUSIC, AND
LYRICS BY
DAVE MALLOY
DIRECTED BY
DAVID MUSE
JANUARY 2026

JONAH

BY RACHEL BONDS
DIRECTED BY
TAYLOR REYNOLDS
MARCH 2026

Purlie Victorious

BY OSSIE DAVIS
DIRECTED BY
PSALMAYENE 24
MAY 2026

FEELING AFRAID AS IF SOMETHING TERRIBLE IS GOING TO HAPPEN

BY MARCELO DOS
SANTOS
DIRECTED BY
MATTHEW XIA
JUNE 2026

SUBSCRIBE AT
STUDIOHEATRE.ORG/SUBSCRIBE
or call the Box Office at 202.332.3300