



**STUDIO**

**RENT OUR SPACE**

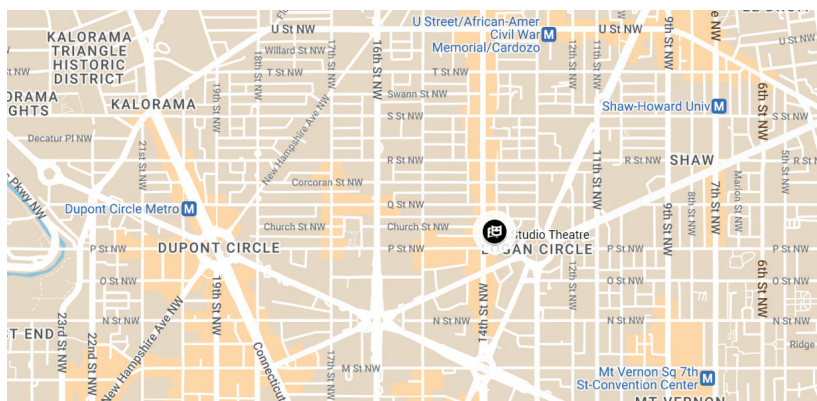
Right at the heart of trendy Logan Circle and vibrant 14th Street, Studio Theatre's recently renovated building offers a variety of unique and versatile spaces to suit your needs. Sleek industrial style and modern sophistication meet in a wide range of available theatres, bars, meeting rooms, and a soaring atrium.

All spaces at Studio that are available to rent are fully accessible to guests with mobility limitations. Our spaces feature multiple entrances suitable for mobility devices, theatre seating designed for differing mobility levels, and elevator access.



## LOCATION

Studio is walking distance to the green and red lines via U Street and Dupont Circle, is on multiple bus lines, and offers guaranteed garage parking at an additional fee.



## PARKING

Studio Theatre does not have its own parking garage, however we do have parking partnerships with both Spot Hero and the Washington Plaza Hotel. You can use Spot Hero to reserve and pay for parking at numerous parking garages near the Theatre (prices vary). You can also park at Washington Plaza Hotel without a reservation after 5:00 pm on weekdays and any time on weekends, and purchase a \$14 Washington Plaza Hotel parking voucher at the Box Office. The main entrance to the Washington Plaza Hotel parking garage closes at 9pm, but the garage is still accessible through the hotel lobby.

There is limited street parking available in the neighborhood as well.

## MOBILITY

### Accessible Entrances

All entrances to the building, theatres, and concessions/bars are accessible. Elevators operate between all four floors.

For accessible drop-off and pickup locations, the curbside lane directly in front of Studio Theatre can be used for short-term loading and unloading only. The entrance on 14th Street is equipped with ADA doors.

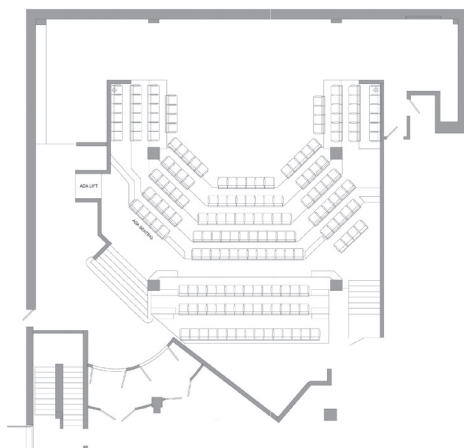
The exit on P Street is not ADA accessible but this exit can be used for short-term idling and guest pickup.

### Accessible Seating

All theatres have wheelchair- and scooter-accessible locations where patrons can remain in their wheelchairs or transfer to seats. The Milton and Mead Theatres are equipped with a platform lift to accommodate guests with wheelchairs.

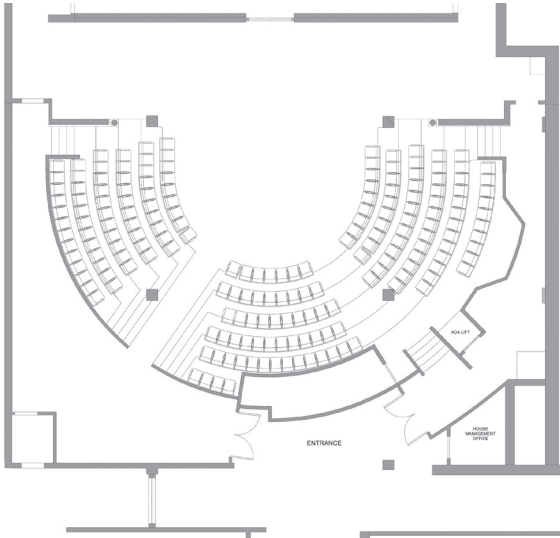
## MEAD THEATRE

The Mead Theatre, the largest of Studio's theatre spaces, offers seating for up to 218 guests, including a riser lift for mobility devices. A backstage area opens into a green room area and private dressing room. The dressing room offers 11 dressing stations, and two private restrooms.



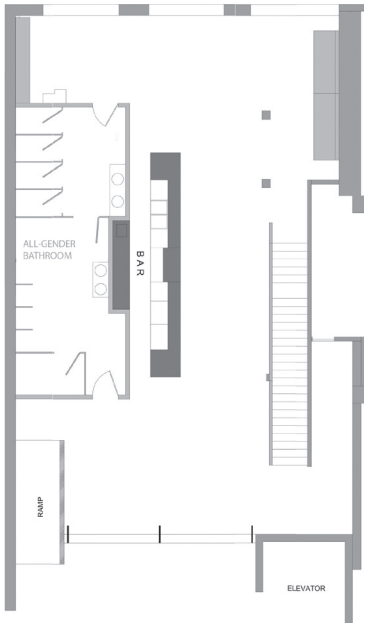
# MILTON THEATRE

The more intimate Milton Theatre can seat 187 guests. The backstage area opens onto a dressing room with nine dressing stations and a private bathroom.



## MILTON BAR

The Milton Lobby and Bar adjacent to the Milton Theatre features a 26.5 foot bar, optional bar tables and chairs as well as built-in bench seating, and large industrial windows onto 14th Street.



## LARGE MEETING ROOM

The Large Meeting Room is a modern space equipped with microphones, speakers, cameras, and a large-screen television for remote events. It also features a skylight window for ample natural light throughout the day, along with rolling tables and plenty of chairs for your meeting or event.



## ATRIUM

Studio's soaring 1600 square foot two-story atrium features beautiful floor-to-ceiling windows that overlook bustling 14th Street, as well as a skylight ceiling and an attached food prep area. It seats 120 comfortably and can accommodate up to 200 at a standing reception.





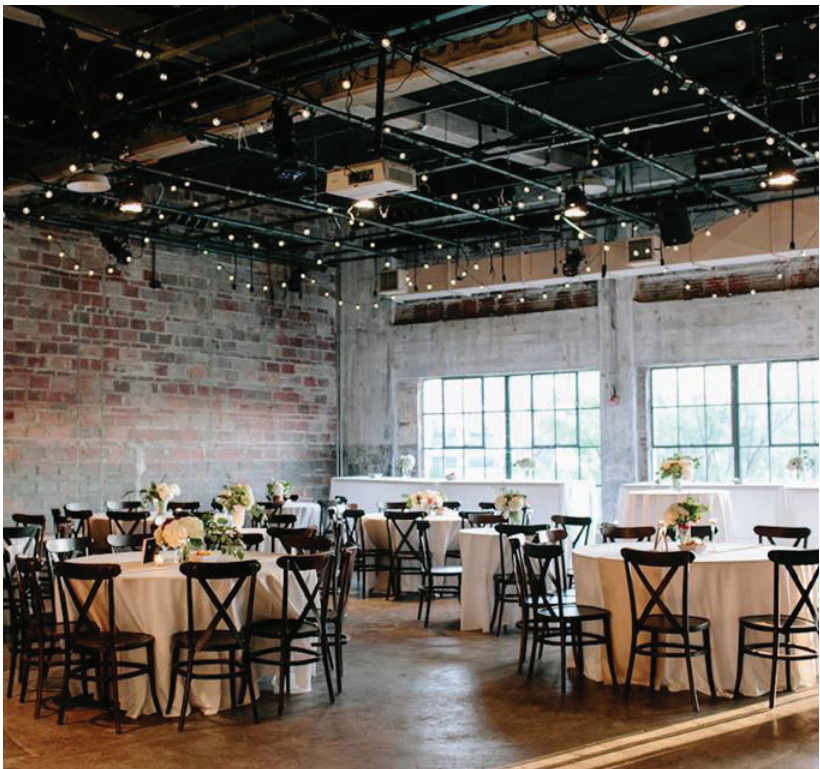
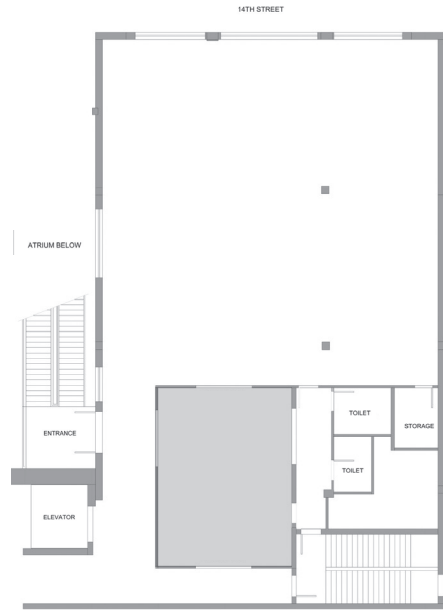
## REHEARSAL HALL

The Rehearsal Room features spectacular warehouse-style windows across two full walls, ensuring the space is always flooded with natural light during the day. This effect is enhanced by the floor-to-ceiling mirrors on a third wall. It also features hardwood floors, and can accommodate 60 guests standing, 50 seated theatre-style, or 30 seated for dinner.



## STAGE 4

Among Studio's most versatile spaces, Stage 4 is a "black box" theatre, designed to be arranged in any configuration for any event. Exposed brick walls and large warehouse-style windows overlooking 14th Street give the space a chic, industrial style. It can seat up to 160 seated or 250 standing guests.





## QUESTIONS?

The Events Team at Studio Theatre is excited to answer any questions you might have about our spaces, their amenities, or pricing. For additional photos and information, please visit the Rent Our Space page on our website ([studiotheatre.org/rentals](http://studiotheatre.org/rentals)).



