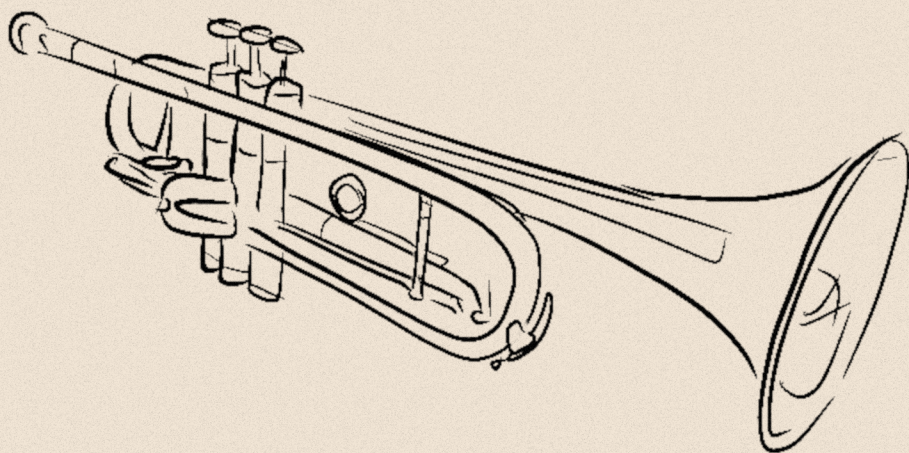


PARADISE BLUE

by Dominique Morisseau



The **PROGRAM**
for Studio Theatre



FRIENDS,

About a decade ago, during one particularly active year, Studio transformed our raw Stage 4 space into four immersive environments. It became a Texas church basement (*Hand to God*), a storage unit packed with floor-to-ceiling boxes (*The Object Lesson*), a semi-circular art installation with built-in seating (*Constellations*), and a fully operational dive bar (*Murder Ballad*). That flurry of imaginative space design became one of the primary inspirations for our last building renovation, which aimed to bring the flexibility of Stage 4 to one of our larger, 'prime time' venues. We removed the seats and flattened the floor of the theatre in which you are likely reading this, and left ourselves with a space flexible enough to become a jazz club called Paradise. It's an exciting culmination for us of a decade-old dream.

This club is a particularly potent symbol in Dominique Morisseau's play, representing different things for different characters. The heart of a community. A haven of artistic freedom. A home. A lifeline. A burden. For those of us who live in modern-day Washington DC, it's a powerful stand-in for Studio's own neighborhood in decades gone by, when 14th & U Streets were an epicenter of Black cultural life where the likes of Duke Ellington and Billie Holiday performed regularly in jazz clubs not unlike Paradise. Like DC's "Black Broadway," Paradise is a bulwark of Black culture and commerce in a neighborhood threatened by the forces of money and politics.

This is the third Dominique Morisseau play that Studio has produced, placing her in the rare company of the 18 or so playwrights that make up Studio's 3+ Club – playwrights like Tom Stoppard, Suzan-Lori Parks, Athol Fugard, and August Wilson. Among her plays, this one stands out as the most genre-tinged. It was director Raymond O. Caldwell, here making his Studio debut, who was wise enough to recognize that its noir thriller vibe would suit an environmental staging like this. I'm excited that you've elected to spend time in the universe Raymond and his creative team dreamt up. Welcome to Paradise!

Yours,

David Muse
Artistic Director

For a note from the dramaturg and more background information on *Paradise Blue* please visit



[studiotheatre.org/
paradise-blue-
dramaturg-note](http://studiotheatre.org/paradise-blue-dramaturg-note)

STUDIO THEATRE

DAVID MUSE
ARTISTIC DIRECTOR

**REBECCA ENDE
LICHTENBERG**
EXECUTIVE DIRECTOR

PRESENTS

PARADISE BLUE

BY
DOMINIQUE MORISSEAU

DIRECTED BY
RAYMOND O. CALDWELL

Paradise Blue is presented by
arrangement with Concord Theatricals
on behalf of Samuel French, Inc.
www.concordtheatricals.com

The World Premiere of *Paradise Blue*
was produced by the Williamstown
Theatre Festival in July, 2015
Mandy Greenfield, Artistic Director;
Stephen M. Kaus, Producer



The Director and/or Choreographer
is a member of the Society of Stage Directors and
Choreographers, Inc., an independent national
labor union.



The scenic, costume, lighting
and sound designers in LORT Theatres are
represented by United Scenic Artists, Local
USA829 of the IATSE.

This Theatre operates under an agreement,
between the League of Resident Theatres
and Actors' Equity Association, the Union of
Professional Actors and Stage Managers in the
United States.

SET DESIGNER
LAWRENCE E. MOTEN III

COSTUME DESIGNER
CIDNEY FORKPAH

LIGHTING DESIGNER
KEITH PARHAM

SOUND DESIGNER
MATTHEW M. NIELSON

MUSICAL DIRECTOR AND
COMPOSER
WILLIAM KNOWLES

INTIMACY COORDINATOR
SIERRA YOUNG

FIGHT CHOREOGRAPHER
ROBB HUNTER

DRAMATURG
ADRIEN-ALICE HANSEL

PRODUCTION STAGE MANAGER
LAUREN PEKEL*

DIRECTOR OF PRODUCTION
JEFFERY MARTIN

TECHNICAL DIRECTOR
RHIANNON SANDERS

CASTING
KATJA ZAROLINSKI, CSA

UNDERWRITTEN BY
BOBBI & RALPH TERKOWITZ

**ALBERT G. LAUBER &
CRAIG HOFFMAN**

AND

PAUL MASSEY & JOSH O'HARRA
WITH ADDITIONAL SUPPORT FROM
CRAIG PASCAL

CAST AND MUSICIANS



PUMPKIN
**KALEN
ROBINSON***



SILVER
ANJI WHITE*



BLUE
AMARI CHEATOM*



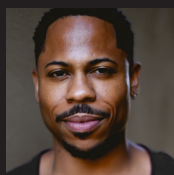
TRUMPETER
**MICHAEL A.
THOMAS**



CORN
**MARTY AUSTIN
LAMAR***



BASSIST
MARK SALTMAN



P-SAM
RO BODDIE*

UNDERSTUDIES

PUMPKIN
ARIELLE MOORE

CORN AND P-SAM
JASON M. JONES

BLUE
OBINNA NWACHUKWU

SILVER
AYSIA GLENN

SETTING: Detroit, Michigan, in a small Black community known as Black Bottom, on the downtown strip known as Paradise Valley. Paradise Club. 1949.



*Member of Actors' Equity Association, the Union of Professional Actors and Stage Managers in the United States

The videotaping or making of electronic or other audio and/or visual recordings of this production and distributing recordings or streams in any medium, including the internet, is strictly prohibited, a violation of the author(s)'s rights and actionable under United States copyright law. For more information, please visit: <https://www.concordtheatricals.com/resources/protecting-artists>

PLAYWRIGHT



DOMINIQUE MORISSEAU

is the author of *The Detroit Project: Three Plays*, including: *Skeleton Crew* (Tony Award nomination for Best Play), *Paradise Blue*, and *Detroit '67*. Additional plays include *Confederates*, *Pipeline*, *Sunset Baby*, *Blood at the Root*, and *Follow Me to Nellie's*. She is the Tony Award-nominated bookwriter on the Broadway musical *Ain't Too Proud: The Life and Times of the Temptations* and is currently working on her latest, *Hippest Trip: The Soul Train Musical*. Television/film credits include *Shameless* (co-producer and writer), the film adaptation of the documentary *STEP* (co-producer), and consultant on the Netflix animated feature, *Tunga*. Awards include Playwrights of New York (PoNY) Fellowship, TEER Trailblazer Award, Steinberg Playwright Award, Audelco Awards, NBF.

DIRECTOR



RAYMOND O. CALDWELL

is an award-winning director, writer, producer, and educator. He is the Artistic Director of The Fountain Theatre in Los Angeles. Recent theatre credits include *Look Both Ways: A Tale Told in Ten Blocks* at The Kennedy Center, *Romeo and Juliet* at Folger Theatre, *Poetry for the People: The June Jordan Experience* at Theater Alliance, *Fly Me to the Sun* at 1st Stage, *Skeleton Crew* at The Contemporary Theatre of Ohio, *Passing Strange* at Signature Theatre (DC), *one in two* at Mosaic Theater Company, and *Nollywood Dreams* at Round House Theatre. He received the 2023 Stage Directors and Choreographers' Foundation (SDCF) Zelda Fichandler Award for directing. Raymond is the former artistic director of Theater Alliance. Prior to artistic leadership, he was a faculty member and resident director at Howard University. He also served for six seasons as the Community Engagement Partnership Manager at Arena Stage. He obtained an MFA in Acting/New Play Development at The Ohio State University and a BFA in Acting from the University of Florida. raymondocaldwell.com.



Khalia Muhammad, Sabrina Lynne Sawyer, Jacques Jean-Mary and Shana Lee Hill in *Exception to the Rule*. Photo by Margo Schulman.

DID YOU KNOW?

Studio hosts 800+ DC public and charter school students every season for student matinees, often introducing them to theatre for the first time. These free performances include:

- **Transportation when necessary**
- **An original curriculum guide that aligns with local and federal curriculum goals**
- **A post-show conversation with the performers**

STUDENT MATINEE PROGRAM SPONSORS

THE SHAPIRO FAMILY FOUNDATION

DC COMMISSION ON THE ARTS AND HUMANITIES

2024-2025 SEASON SPONSORS

SUSAN AND DIXON BUTLER
SHERYL AND RICK DONALDSON
DR. MARK EPSTEIN AND
AMORETTA HOEBER
JINNY AND MICHAEL GOLDSTEIN
SARI HORNSTEIN
ALBERT G. LAUBER AND
CRAIG HOFFMAN
PAUL MASSEY AND JOSH O'HARRA
LOU MAZAWAY
JOAN AND DAVID MAXWELL

CRAIG PASCAL
BELINDA AND GREGORY NIXON
KATY KUNZER ROSENZWEIG AND
PAUL ROSENZWEIG
TERESA AND DAN SCHWARTZ
STEVE AND LINDA SKALET
BOBBI AND RALPH TERKOWITZ
MARK TUSHNET AND
ELIZABETH ALEXANDER
AMY WEINBERG AND
NORBERT HORNSTEIN

KALEN ROBINSON (Pumpkin) is an actress, dancer, and singer making her Studio debut. Her theatre credits include *Finn* at The Kennedy Center, *Look Both Ways: A Tale Told in Ten Blocks* national tour with The Kennedy Center, *Beautiful: The Carole King Musical* at Olney Theatre Center, *The Sensational Sea-Minkettes* at Woolly Mammoth Theatre Company, *Metamorphoses* at Folger Theatre, *Nate the Great* and *The Hula-Hoopin' Queen* at Imagination Stage, *Passing Strange* at Signature Theatre (DC), *Once on This Island* at Constellation Theatre Company and Lyric Theatre of Oklahoma, *Spring Awakening* at Round House Theatre, and *Cinderella* and *The 25th Annual Putnam County Spelling Bee* at Fulton Theatre. Originally from Atlanta, GA, she received her BFA in Musical Theatre at Howard University. kalenrobinson.com. On social media @k_nicole143 (Instagram).

AMARI CHEATOM (Blue; he/him/his) is making his Studio Theatre debut. His theatre credits include *Red Velvet* at Shakespeare Theatre Company; *The Book Of Grace* at The Public Theater; *Zooman and The Sign* at Signature Theatre Company (NYC); *Jitney* at Manhattan Theatre Club; *Sally & Tom* at the Guthrie Theater; *Skeleton Crew* at the Geffen Playhouse and The Old Globe; *Detroit '67* at Baltimore Center Stage; *A Raisin In the Sun* at Theatrical Outfit; *The Temple Bombing* at Alliance Theatre; and *Fetch Clay, Make Man* at True Colors Theatre Company. Amari can also be seen in films such as *Judas and the Black Messiah*; *Roman J. Israel, Esq.*; *Moths & Butterflies*; and *Django Unchained*. He received training from The Juilliard School, Youth Ensemble of Atlanta, and Tri-Cities High School of Visual and Performing Arts.

MARTY AUSTIN LAMAR (Corn) is an actor, musician, assistant professor, and arts advocate. Some of his theatre credits include *Choir Boy* at Studio Theatre and *Miss Evers' Boys* Off Broadway at the Red Fern Theatre Company. Other credits include *The Amen Corner* at Shakespeare Theatre Company; *Ragtime* at 5-Star Theatricals and Portland Center Stage; *Ain't Misbehavin'* at Ebony Repertory Theatre; *Little Shop of Horrors* at

Constellation Theatre Company; *Spunk* at Signature Theatre (DC); *On the Brink* at The Kennedy Center; *Big River* at Mill Mountain Theatre; and *Don't Bother Me, I Can't Cope* at The Essential Theatre. Television credits include *Law & Order* (NBC) and a Blue Bunny ice cream national commercial campaign. Marty's musical directing credits include *Black Nativity*, *A Chorus Line*, *Merrily We Roll Along*, *The Lightning Thief*, and *Handel's Messiah*.

RO BODDIE (P-Sam) is an actor, musician and educator. His Studio Theatre credits include *Pipeline*, *Three Sisters*, *No Sisters*, and *Dirt*. His Off Broadway credits include *Socrates* at The Public Theater and *Seize the King* at The Classical Theatre of Harlem. Select DC credits include *The Comedy of Errors* at Shakespeare Theatre Company; *Topdog/Underdog*, *The Mountaintop*, *August Wilson's Radio Golf*, and *The Tempest* at Round House Theatre; *Tempestuous Elements* at Arena Stage; and *The Agitators* at Mosaic Theater Company. Ro has acted at regional theatres such as La Jolla Playhouse, Cleveland Play House, The Old Globe, Mark Taper Forum, Bay Street Theater, Baltimore Center Stage, and more. Select TV credits include *Godfather of Harlem* (Epix), *Run the World* (Starz) and *The Good Wife* (CBS). Ro is a proud alum of University of North Carolina School of the Arts '09. On social media @roboddieart (Instagram).

ANJI WHITE (Silver) theatre credits include *Fat Ham* at Goodman Theatre (co-production with Definition Theatre), *East Texas Hot Links* and *for colored girls who have considered suicide / when the rainbow is enuf* at Court Theatre, *Sunset Baby* at TimeLine Theatre Company, *Skeleton Crew* at Northlight Theatre, and *The Project(s)* at American Theater Company. Anji's television credits include *Fargo* (FX), *Chicago Med* (NBC), *61st Street* (AMC), *The Chi* (Showtime) and more. Anji will appear in Marvel's *Ironheart* premiering in June 2025. Anji has received a Joseph Jefferson Award for Best Ensemble and a Black Theatre Alliance Award for Best Actress. She is represented by Paonessa Talent. Matthew 6:33.

MUSICIANS

MICHAEL A. THOMAS (Trumpet) is a trumpeter, recording artist, writer, band leader, and Grambling State University alumnus. He's collaborated with renowned artists/bands like The Count Basie Orchestra, Washington Renaissance Orchestra, Buck Hill, Andrew White and many others. In 2023, his quintet celebrated 25 years with 25 under JazHead Entertainment LLC. Their performances at "Jazz at Westminster" have solidified their place in DC's vibrant jazz scene. Passionate about music and community, Michael is a key figure in the DMV's historic jazz scene. On social media: @MThomas_JazHead (Instagram, Tik Tok, Twitter, Facebook) On all digital music platforms (Michael Thomas Quintet) jazhead.com and linktr.ee/jazheadstore.

MARK SALTMAN (Bass) resides in the Washington, DC area and has an M.A. in composition from the University of Massachusetts Amherst, where he studied with musical pioneer Dr. Yusef Lateef. He has played numerous gigs on the double bass in theaters and clubs and has taught music in the public and charter school systems. Mark scored the award-winning feature film *Dante* and the short film *Lifecell*, as well as other short films. He co-leads the original jazz group SaltmanKnowles with pianist William Knowles. He has also written articles about the nature of music and color, Synaesthesia. He is intensely interested in all things creative and recently earned a black belt in martial arts. saltmanknowles.com.

PRODUCTION

LAWRENCE E. MOTEN III (Set Designer; he/him/his) is making his Studio Theatre debut with *Paradise Blue*. His work has been seen on Broadway with *Chicken & Biscuits*. Off Broadway credits include scenic designs for *A Guide for the Homesick* at DR2 Theatre, *The Ghost of John McCain* at SoHo Playhouse, *The White Chip* at MCC Theater, *Covenant* at Roundabout Underground, *Patience* at 2ST Uptown, and both *Stew* and *Stargazers* with Page 73. Regionally, Lawrence's work has been seen at Shakespeare Theatre Company, Hartford Stage, The Old Globe, the Guthrie Theater, McCarter Theatre Center, The Santa Fe Opera, Wolf Trap Opera, American Players Theatre, Two River Theater, and many others. He currently teaches at Princeton University. Lawrence is a proud member of USA 829. motendesigns.com. On social media @motendesigns (Instagram).

CIDNEY FORKPAH (Costume Designer)'s credits include *American Fast* and *The Trans-Atlantic Time Traveling Company* at Theatre Alliance; *hang* and *Quilters* at 1st Stage; *Fuenteovejuna*, *Bathing in Moonlight*,

KUMANANA! An Afro-Peruvian Musical Revue, and *La Revoltosa* at GALA Hispanic Theatre; *Cracking Zeus* at Spooky Action Theater; *The Tempest* at Devil's Isle Shakespeare Co.; and *Diagnosed* at Creative Cauldron. Her associate costume designer credits include *Look Both Ways: A Tale Told in Ten Blocks* at Theater Alliance and The Kennedy Center, the national tour of *On Your Feet!* as well as *On Your Feet! En Español* at GALA Hispanic Theatre for Young Audiences, *Our Verse in Time to Come* at Folger Theatre, *The Piano Lesson* at Prince George's Community College, and *Julius Caesar* and *The Cherry Orchard* at Shakespeare Theatre Company's Academy for Classical Acting. She is Costume Supervisor with Folger Theatre. cidneyforkpah.com. On social media @cidneyforkpah (Instagram).

KEITH PARHAM (Lighting Designer) returns to Studio Theatre where he previously designed *Pass Over*, *Translations*, *Hand to God*, and *The Father*. His Broadway credits include *Between Riverside and Crazy* and *Thérèse Raquin*. His Off Broadway credits include *Man from Nebraska* at Second

Stage; *The Purple Lights of Joppa Illinois* and *Between Riverside and Crazy* at Atlantic Theater Company; *The Model Apartment* at 59E59; *Tribes, Mistakes Were Made*, and *Red Light Winter* at Barrow Street Theatre; *Stop the Virgins* at St. Ann's Warehouse and Sydney Opera House; *Ivanov* and *Three Sisters* at Classic Stage Company; *A Minister's Wife* at Lincoln Center Theater; and *Adding Machine: A Musical* at Minetta Lane Theatre. Recent regional credits include the Goodman Theatre, La Jolla Playhouse, Arena Stage, and TUTA Theatre Chicago. International work includes *Homebody/Kabul* at the National Theatre in Belgrade, Serbia. He is the recipient of an Obie Award and a Lucille Lortel Award.

MATTHEW M. NIELSON (Sound Designer) returns to Studio where his design and composition credits include *Hand to God*, *Clyde's*, *The Remains*, *MotherStruck*, *The Real Thing*, and *Venus in Fur*. His DMV-area credits include shows with Arena Stage, Ford's Theatre, The Kennedy Center, Round House Theatre, Woolly Mammoth Theatre Company, Signature Theatre, Olney Theatre Center, Theater Alliance, the Contemporary American Theater Festival, and The Smithsonian Institution. Off Broadway credits include The Public Theater, Lincoln Center Theater, and 59E59 Theaters. Regional credits include the Guthrie Theater, Denver Center for the Performing Arts, Cincinnati Playhouse in the Park, Milwaukee Rep, Portland Center Stage, Actors Theatre of Louisville, Philadelphia Theatre Company, and Barrington Stage Company. Film and TV credits include Netflix, OWN, Discovery Channel, National Geographic, and Delivery.com. Matthew has received several Helen Hayes (HH), regional theatre, and film festival awards for his sound design and composition work. curiousmusic.com.

WILLIAM KNOWLES (Musical Director and Composer) is a composer, arranger, music director, and pianist. His first theatre job was *Bessie's Blues* at Studio Theatre in 1995 and he was delighted to return last year for *The Colored Museum*. William has also worked at Arena Stage, Mosaic Theater Company, CenterStage, Milwaukee Rep, MetroStage,

Great Lakes Theater, Idaho Shakespeare Festival, and The 5th Avenue Theatre, where he will return this summer as music director for *After Midnight*. Offstage, he has released eight jazz CDs with music partner Mark Saltman, most recently *Native Speaker*. When not on the road, he can be found playing jazz gigs in the DC area. On social media [@williamknowlespiano](https://twitter.com/williamknowlespiano) [@saltmanknowles](https://www.instagram.com/saltmanknowles) (Instagram).

SIERRA YOUNG (Intimacy Coordinator; she/her) is a multi-hyphenate artist in the DC/Baltimore area. Sierra is an active member of the Society of American Fight Directors, Intimacy Directors & Coordinators, SDC, and serves as the resident fight and intimacy director for Mosaic Theater Company. Recent Studio credits include *The Scenarios*, *Downstate*, *Exception to the Rule*, and *The Colored Museum*. Recent DC choreography credits include *The Age of Innocence*, *Jaja's African Hair Braiding*, and *POTUS* at Arena Stage; *Sister Act* and *Little Shop of Horrors* at Ford's Theatre; *Spring Awakening* (HH nominated) at Monumental Theatre Company; *King Lear* (HH nominated) at Shakespeare Theatre Company; and *Prayer for the French Republic* at Theater J. Upcoming projects include *Frankenstein* at Shakespeare Theater Company, *Twelfth Night* at Folger Theatre, *Head Over Heels* at Constellation Theatre Company, and *Porgy and Bess* at the Washington National Opera. sierrayoung.org.

ROBB HUNTER (Fight Choreographer) has directed violence for more than 25 Studio productions including *Downstate*, *White Noise*, *Vietgone*, *Hand to God*, *Invisible Man*, *Superior Donuts*, *American Buffalo*, *Red Speedo* (HH nomination), and *The Walworth Farce* (HH nomination). He also directs movement/violence for Shakespeare Theatre Company, including for *King Lear*, *Richard III* (HH nomination), *A Comedy of Errors* and others; as well as Arena Stage, Folger Theatre, Woolly Mammoth Theatre Company (HH award for *Hir* and nomination for *An Octoroon*), Signature Theatre (DC), Ford's Theatre, and others. He is a member of SDC, AEA, SAG/AFTRA, and one of only 21 Fight Masters

recognized by the Society of American Fight Directors. He is the combat instructor at the Shakespeare Theatre Company Academy, Fight Choreographer in Residence at American University, and teaching artist for The Studio Theatre Acting Conservatory. robbshunter.org and on social media, @DCFightDirector (Instagram).

ADRIEN-ALICE HANSEL (Dramaturg; she/her) is the Literary Director at Studio, where she has dramaturged the world premieres of *The Scenarios*, *Problems Between Sisters*, *Good Bones*, *John Proctor is the Villain*, *I Hate it Here*, *Queen of Basel*, *Red Speedo*, and *Lungs*, among others, as well as productions of *Summer, 1976*; *Exception to the Rule*; *The Colored Museum*; *Fat Ham*; *Fun Home*; *English*; *Curve of Departure*; *Wig Out*; and *New Electric Ballroom*; among many others. Prior to joining Studio, she spent eight seasons as a member of and then running the Literary Department at the Actors Theatre of Louisville and its Humana Festival of New American Plays. She is the co-editor of eight anthologies of plays from Actors Theatre and editor of 14 editions of plays through Studio. Adrien-Alice holds an MFA from the Yale School of Drama.

LAUREN PEKEL (Production Stage Manager) returns to Studio Theatre after last working on *Fat Ham*. Some of her favorite Studio credits include *Fun Home*; *Good Bones*; *People, Places & Things*; *Doubt*; *Cry It Out*; *Vietgone*; *P.Y.G. or the Mis-Education of Dorian Belle*; *Skeleton Crew*; *The Father*; and *No Sisters*. Her other DC credits include productions with Signature Theatre, Arena Stage, Folger Theatre, Woolly

Mammoth Theatre Company, Theater J, Mosaic Theater Company, Theater Alliance, and The Kennedy Center. Regionally, she has worked with the American Conservatory Theater, the Peterborough Players, and Skylight Music Theatre among others. Lauren is an alumna of the University of Wisconsin Milwaukee's Theatre Program with a BFA in Stage Management and is a proud member of Actors' Equity Association.

KATJA ZAROLINSKI, CSA (Casting) is thrilled to be casting for another production for Studio Theatre. Katja is a New York-based casting director handling productions for theater, film and television. Previous casting work includes Broadway, off Broadway and regional productions at Alley Theatre, Arena Stage, Asolo Repertory Theatre, Baltimore Center Stage, Barrington Stage Company, Berkshire Playwrights Lab, Cape Playhouse, Chicago Shakespeare Theater, City Theatre Company, Connecticut Repertory Theatre, Contemporary American Theater Festival, Crossroads Theatre Company, Everyman Theatre, Florida Studio Theatre, George Street Playhouse, Goodspeed Musicals, Guthrie Theater, Irish Repertory Theatre, Kansas City Repertory Theatre, Marin Theatre Company, Merrimack Repertory Theatre, Mosaic Theatre, Olney Theatre Center, Oregon Shakespeare Festival, Pittsburgh CLO, PlayMakers Repertory Company, Pittsburgh Public Theater, The Repertory Theatre of St. Louis, Seattle Rep, Shakespeare & Company,

For additional bios and more information visit: studiotheatre.org/paradise-blue



ALL FOOD AND DRINK
SERVICES ARE PROVIDED
BY OUR BAR PARTNER
GIGGLE WATER

Monday - Wednesday: 4 pm - 10 pm

Thursday: 4pm - 12 am

Friday - Sunday: 3pm - 12am

Located in the Mead Lobby

PRODUCTION STAFF

ASSISTANT DIRECTOR
NORA GEFFEN

ASSISTANT STAGE MANAGER
BRIAN MARTINEZ

ASSISTANT TECHNICAL DIRECTOR
ISABELLA PEDRAZA

WIGS AND MAKEUP DESIGNER
LASHAWN MELTON

DIALECT COACH
KIM BEY

PROPERTIES SUPERVISOR AND
PROGRAM COVER DESIGNER
AMY KELLETT

SCENIC CHARGE
MEG ZETTELL

CARPENTERS
NICK SINES, TROY JOHNSON

PAINTER
OLIVIA CHOLEWCZYNSKI

WARDROBE CREW
ILEANA BLUSTEIN

SOUND BOARD OPERATOR:
WILLIAM STUTZMAN

LIGHT BOARD OPERATOR
CLARISSA BRIASCO-STEWART

PROGRAM GRAPHIC DESIGNER
BILL GEENEN

COMMUNITY SHOW PARTNERS

For *Paradise Blue*, Studio Theatre has partnered with CapitalBop, a nonprofit organization dedicated to promoting, presenting and preserving jazz in Washington, DC and Empower DC, who support resident-led community organizing against gentrification and to advance racial, economic, and environmental justice.



Find your purpose.

The Princeton Review®
Best College Theater

The University of Mary Washington is a place to discover who you are. Lean into faculty who will challenge you, encourage you, and celebrate your victories. Dream big, find your purpose, and take your next steps with us by your side.

www.umwtheatre.org

University of Mary Washington
Theatre and Dance



LEADERSHIP

DAVID MUSE
ARTISTIC DIRECTOR

REBECCA ENDE LICHTENBERG
EXECUTIVE DIRECTOR

BOARD OF TRUSTEES

Rob Batarla
CHAIR

Karen Doyne
VICE CHAIR

Navroz Gandhi
TREASURER

Belinda Elvan Nixon
SECRETARY

Marc Albert

Jeremías Alvarez

Susan L. Butler

Rick Donaldson

Dr. Mark Epstein

Mark W. Foster

Yinuo Geng

Jinny Goldstein

Susan L. Gordon

John Guggenmos

Renee Matalon

Dr. Dayna Matthew

Larry Naake

Tuknekah Noble

Jamie C. Pate

Dusty Riddle

Katy Kunzer Rosenzweig

The Honorable Carol

Schwartz

Teresa Schwartz

Luz Blancas Sevak

Barney Shapiro

Steven A. Skalet

Bobbi Terkowitz

Terry Theologides

Robert Tracy

Amy Weinberg

EX-OFFICIO

David Muse

Rebecca Ende Lichtenberg

FOUNDING ARTISTIC DIRECTOR

Joy Zinoman

FELLOWS-IN-RESIDENCE PROGRAM

The Studio Fellows-in-Residence program prepares future artists and administrators for a successful career in the arts through a rigorous, hands-on training experience over the course of a full theatrical season.

PROGRAM SPONSORS

SUSAN AND DIXON BUTLER

SARI HORNSTEIN

TERESA AND DAN SCHWARTZ

AMY WEINBERG AND NORBERT HORNSTEIN

With additional support from Paul M. Angell Family Foundation, The Nora Roberts Foundation, Jeffrey Bauman and Linda Fienberg, and Herb and Dianne Lerner.

ARTISTIC

DANILO GAMBINI

Associate Artistic Director

ADRIEN-ALICE HANSEL

Literary Director

Commissioned Artists

AK PAYNE

MARGOT BORDELON

RAYMOND O. CALDWELL

SARAH DELAPPE

ERIKA DICKERSON- DESPENZA

MIRANDA HAYMON

MOLLY SMITH METZLER

TYNE RAFAELI

TAYLOR REYNOLDS

GEOFF SOBELE

Readers Circle

MALAIKA FERNANDES

FRANCESCA SABEL

PRODUCTION

JEFFERY MARTIN

Director of Production

CLARICE BERARDINELLI

Rentals & Events Manager

MADISON BAHR

Assistant Production
Manager

BRANDEE MATHIES

Costume Shop Manager

CHRISTION JONES

Lighting & Sound
Supervisor

RHIANNON SANDERS

Technical Director

SARAH MCCARTHY

Master Carpenter

MIGUEL GOMEZ

CFP Production Assistant

DEVELOPMENT

BIANCA BECKHAM

Director of Development

HANNAH HESSEL RATNER

Associate Director of
Development

DARCY FOWLER

Development Operations
Manager

EMMA CUMMINGS

Donor Relations Coordinator

GENERAL MANAGEMENT

KATHRYN HUEY

Director of Finance &
Administration

AMANDA ACKER

Business Director

CORY MCCONVILLE

Operations Manager

CARMEN PIERCE

Management &
HR Coordinator

MARKETING AND COMMUNICATIONS

HILARY JUDIS

Director of Marketing and
Communications

REBECCA FISCHLER

Associate Director of Marketing
and Communications

SHANE OLIVER

Audience Services Director

GABBY WOLFE

Marketing Insights Manager

AVI LITTKY

Digital Marketing Associate

JEFF KLEIN

Box Office Supervisor

Lead Box Office Associates

MARTHA HAHN

SYDNE LYONS

CHARLOTTE NEWTON

Box Office Associates

TYMETRIAS BOLDEN

MAYA BROWN

DAY FULLER

JAMES LAU

ANNA LONGENECKER

Lead House Managers

KECHE ARRINGTON

BRINDEN BANKS

DANIEL BINDER

MARCEL HARTLEY

BRIAN KLOSE

STEPHANIE LANDRY

KAIYA LYONS

GAELYN SMITH

JAIDA GILLESPIE

House Managers

SAVANNAH BLACKWELL

ARYSSA DAMRON

SPIKE DICKERSON

DONTA HENSLEY

AUDRA JACOBS

MARCEL HARTLEY

LAYLA NABAVI

BOB REEG

ERIN SHORT

CHRISTIAN MORENO

MCKENNA CANTY

2024-25 FELLOWS

BLAKE BERGGREN

PRODUCTION AND EVENTS
FELLOW

CLARISSA BRIASCO- STEWART

ELECTRICS FELLOW

NORA GEFFEN

DIRECTING FELLOW

GURSIMRAT KAUR

ARTISTIC PRODUCING
FELLOW

ADRIAN KNAPPERTZ

SOUND AND
PROJECTION FELLOW

BRIAN MARTINEZ

STAGE MANAGEMENT
FELLOW

ISABELLA PEDRAZA

TECHNICAL DIRECTION
FELLOW

ANASTASIYA RAKOVA

BUSINESS FELLOW

JULIANA SHRIVER

COMPANY MANAGEMENT
FELLOW

ELIZA SNIPES

MARKETING AND
COMMUNICATIONS FELLOW

THANK YOU TO OUR SUPPORTERS

ARTISTIC DIRECTOR'S CIRCLE

Cindy and Mark Aron
Jeffrey Bauman and Linda Fienberg
Nan Beckley
Susan and Dixon Butler
Trudy H. Clark
Rick and Sheryl Donaldson
Karen Doyné
Dr. Mark Epstein and Amoretta Hoerber
Hope and Mark Foster
The Galena-Yorktown Foundation
Bennett Goldberg and Danielle Ellis
Jinny and Mike Goldstein
Susan L. Gordon
John Guggenmos and Timur Loynab
John and Meg Hauge
Donald E. Hesse and Jerrilyn Andrews
Sari Hornstein
Rick Kasten
Arlene and Robert Kogod
Albert Lauber and Craig Hoffman
Dianne and Herbert Lerner
Paul Massey and Josh O'Hara
David and Joan Maxwell
Louis Mazawey
Belinda and Gregory Nixon
Craig Pascal
Jamie Pate
Kathleen Kunzer and Paul Rosenzweig
Samantha Sault
Teresa and Daniel Schwartz
Linda and Steven Skalet
Andy and Ed Smith
Bobbi and Ralph Terkowitz
Terry Theologides and Deb Rodriguez
Elizabeth Alexander and Mark Tushnet
Norbert Hornstein and Amy Weinberg

OVATION CIRCLE

Marc Albert and Steven Tschida
Dr. Stewart Aledort and Dr. Sheila Rogovin
Jeremías Alvarez
Alan Asay and Mary Sturtevant
Robert Batarla
Bernard Family Foundation
Robin Berrington
Peter Bieger
Lynn Bonde and Richard Lehmann
The Honorable Ann Brown
Cory and Rachel Capps
John Chester and Betty Shepard
Margery Doppelt and Larry Rothman
E&B Family Trust
Anne and Marc Feinberg
Gerard Fiala
Navroz and Perinaaz Gandhi
Wendy and William Garner
George Wasserman Family Foundation
Henry H. and Carol Brown Goldberg
The Graham Stretch Family Foundation
The Greene-Milstein Family Foundation
Frona Hall
Larry Haller and Sherry Marts
Kirby Heller and Steve Dennett
Richard and Pamela Hinds
Linda Lurie Hirsch
John Horman
Lynne and Joseph Horning
Gale Anne Hurd
Hal Jones and Anne-Lise Auclair-Jones
John Keator and Virginia Sullivan
David and Helen Kenney
Kyle Kerr
Arlene and Martin Klepper
Judy and Peter Blum Kovler Foundation
Barry Kropf
Vinca and David LaFleur
The Lewis Butler Foundation
Linwei Li
B. Thomas Mansbach
Renee R. Matalon and Stephen H. Marcus
Dan and Karen Mayers
The Morningstar Foundation
Morrissette Family Foundation
Zell Murphy and Mark Wasson
Ken and Margaret Muse

Larry and Joan Naake
Carl and Undine Nash
Tuknekah Noble
The Nussdorf Family Foundation
Sandra and Gilbert Oken Foundation
Daniel Pattenden
Merrie Pearl and Dylan Slotemaker
Carl and Margaret Pfeiffer
Daniel Pink
Michael and Penelope Pollard
Judith D. Pomeranz
Ane Powers
Lutz Prager
Timothy Price
Peter Reichertz
Jennifer Robb
Sara Rosenbaum and Dan Hawkins
Steven M. Rosenberg and Stewart C. Low III
Irene Roth and Vicken Poochikian
Dr. April Rubin and Mr. Bruce Ray
Stephen A. Saltzburg and Susan Lee
Sandra and Albert Schlachtmeyer
The Honorable Carol Schwartz and Robert Tyler
Barney Shapiro
Linda and Stanley Sher
Aimee Smart and Shefa Gordon
Spoor Family Fund
Edward Starr and Marilyn Marcossion
Robert Tracy and Marty Gross
Kazuko and Yoshine Uchimura
Ernie and Anne Wallwork
Gloria Weissberg
Beverly and Christopher With
Judy and Leo Zickler

OPEN CIRCLE

Dean Amel and Terry Savella
Linda Adams
Marcia and Larry Arem
Liz Barratt-Brown
R. Joseph Barton and Tricia Placido
Scott Douglas Bellard
Allan and Michelle Berman
Jessica Berman and Michael Fernandez
Loren and Peter Brandman
Joe and Sue Bredekamp
Keith and Kristen Burnham
Blain and Peg Butner
E.S. Carton
Jessica Case
Dr. Morris J. Chalick MD
Cecilia Chandler

Nancy Chasen and Don Spero
 Cathi Cohen
 Brian Collins
 David Cooper and Stephen Nash
 Will and Carol Cooke
 Drew Courtney & Nick Berning
 Nancy Crisman
 Michael Crosswell
 Johanna Cummings
 Richard and Janet Dante
 Laurie Davis and Joseph Sellers
 Nancy Deck and Michael Gross
 John Driscoll
 Ellen and Fred Ende
 Wayne Farmer
 James Feldman and Natalie Wexler
 Danielle Feist
 Jill A. Fields
 Leo S. Fisher &
 Susan J. Duncan Gift Fund
 Trudy Fleisher
 Amy C. Gilbert and Steven Newpol
 Paula Siegle Goldman
 Joyce and Richard Gordon
 Sally Gresham
 John G. Guffey
 Gail Gulliksen
 Bonnie and Alan Hammerschlag
 Harmon Charitable Fund
 Wendell Hausdorff
 James Heegeman
 Margaret Freeston Hennessey
 Melane Hoffmann
 Marvene Horwitz
 John and Gail Howell
 Jason Johnston
 Leonade D. Jones
 Thomas Joseph
 Mr. Christopher Junker
 Terrence Kalahurka
 Jeremy and Melanie Kaplan
 Robert L. Kimmins
 Jan Klein
 Lauren Kogod and David Smiley
 Leslie Kogod
 Dr. and Mrs. William Kramer
 Carrie Langsam
 Robert Lanman and Debra Bergoffen
 Chad Lash and Caryn Wagner
 James Leonard
 Janet Lewis
 Romana Li and Bruce Bartels

Lifland-Radmer Fund
 Eve Lilley
 J. Thomas Marchitto and
 Shawn C. Helm
 Dan and Susan Mareck
 Martha Washington Straus-
 Harry H. Straus Foundation
 Lynne Martin
 Dayna Bowen Matthew
 Anne Mayerson
 Bruce and Mara Mayor
 David McKinney
 Mark Meister and Carla Krivak
 Jeffrey Menick
 George Adkins and Jeff Mendell
 Richard and Ellen Miller
 Jane Molloy
 Mufson Family Foundation
 Lou and Sherry Nevins
 Martha Newman
 Patty and Jerry Olszewski
 Linda & Peter Parshall
 Prayson and Jane Pate
 Stan Peabody
 Evelyn Sandground & Bill Perkins
 Charles Pfleeger
 Teresa Plotkin
 Michael and Deborah Poliner
 Murray Pollack
 Timothy Price
 Dusty Riddle and Daniel Aune
 Julie Rios
 Jim Ritter
 Lucinda Romberg
 The Henry and Susan Rose
 Family Fund
 Lynn Rothberg
 Frank Sammartino and Ellen Starbird
 Christina Samson
 John Sargent
 Linda B. Schakel
 Mady Schichor
 The Schlossberg Family Fund
 Richard Tucker Scully and
 Lee A. Kimball
 Amit Sevak and Luz Blancas Sevak
 Jennifer Shea and Peter Bruns
 Elaine and English Showalter
 Ann and John Skeele
 Carl Wayne Smith
 Cecile Srodes
 Suzanne P. Stetkevych
 David Stevens and Linda Wymbs

Jeanne Stovroff
 Tom Strikwerda and Donna Stienstra
 Aileen and Jack Sullivan
 Grant P. and Sharon R. Thompson
 Dr. Charles and Cecile Toner
 Steve Verna
 Eric R. and Laura M. Wagner
 Gayle Wald
 Elisse Walter and Ron Stern
 Melissa Weber
 Kip Weissman and Kathy Balog
 Westport Foundation -
 Gail and John Harmon
 Carolyn Wheeler
 Elizabeth White
 John and Sue Whitelaw
 Annelie Wilde
 Jeffrey Wilder
 Melissa Wiley
 Sandy and Jon Willen
 James Williams
 Robert Wise
 Allison and Doug Zabransky
 Margot Lurie Zimmerman

CORPORATE, FOUNDATION, AND GOVERNMENT SUPPORT

William S. Abell Foundation, Inc.
 Dallas Morse Coors Foundation for
 the Performing Arts
 DC Commission on the Arts
 and Humanities
 Graham Holdings Company
 The Max and Victoria Dreyfus
 Foundation
 Milton and Dorothy Sarnoff
 Raymond Foundation
 The Morris and Gwendolyn Cafritz
 Foundation
 Morgan Fund at Seattle Foundation
 National Capital Arts and Cultural
 Affairs Program and the US
 Commission of Fine Arts
 National Endowment for the Arts
 The Nora Roberts Foundation
 Paul M. Angell Family Foundation
 Share Fund
 Shapiro Family Foundation
 Shubert Foundation

*In memoriam

This list represents contributions of \$500 or more made to the annual fund as of April, 9 2025. Every effort has been made to ensure the accuracy of this listing. For more information, please contact the Development Department at 202.919.3712.

*a diverse roster of thought
provoking contemporary plays*



STUDIO

T H E A T R E

Studio Theatre is a longstanding Washington cultural institution dedicated to the production of contemporary theatre. We are a community of artists and audience members who believe in the power of theatre to help us understand the world, engage with some of the most important ideas and issues of the day, and affirm our common humanity.

Over 45 years and more than 350 productions, Studio has grown from a company that produced in a single rented theatre to one that owns a multi-venue complex stretching half a city block, but we have stayed committed to our core distinguishing characteristics: deliberately intimate spaces; excellence in acting and design; and seasons that feature many of the most significant playwrights of our time.

Each season, we present a diverse roster of thought-provoking contemporary plays, featuring local, national, and international artists. We also invest in the incubation and development of new work and nurture the next generation of arts leaders.

We are committed to anti-racism and make a concerted effort to proactively dismantle barriers that have excluded people from joyful participation in our art form. Rooted in our mission to foster a more thoughtful, empathetic, and connected community, Studio strives to welcome a wide and diverse audience.

STUDIO IS A VALUES-
FOCUSED ORGANIZATION
THAT PURSUES
ARTISTRY AND
INCLUSION. AND BRINGS
CHARACTERISTIC
THOUGHTFULNESS AND
DARING TO OUR
EFFORTS ONSTAGE AND
OFF.



Our community engagement efforts include access and affordability initiatives, a growing community partner program, free student matinees, and a commitment to opening up our building as a hub for our neighborhood and city.

1501 14TH ST NW. WASHINGTON DC 20005

In all that we do, Studio endeavors to make an essential contribution to the vitality of our nation's capital.