

A NON-CONFEDERATE ROMP THROUGH THE COTTON PATCH

POPULAR

VICTORIOUS

STUDIO



FRIENDS,

Let me begin by giving credit where it's due: to actor Leslie Odom, director Kenny Leon, and all of the artists and producers who championed *Purlie Victorious* and returned it to Broadway in 2023, reasserting its place in the canon and introducing a new generation of theatregoers—myself included—to its splendor. At a time when the question of which stories get preserved is especially urgent, I'm pleased to participate in and amplify their act of reclamation and remembrance.

Written during the height of the Civil Rights Movement, *Purlie Victorious* is a comedy about the absurdities of American racism. Ruby Dee, playwright Ossie Davis's wife and the original Lutiebell Jenkins, initially had reservations about its satirical tone. She worried that humor might undercut the seriousness of the Black struggle and let audiences enjoy themselves without grappling with anything. But working on the play convinced her that Ossie was right: that laughter can disarm, that satire sometimes exposes injustice more sharply than straightforward drama, and that powerful truths are often best delivered with a smile.

The play challenges you and makes you laugh out loud, balancing critique with a spirit of uplift. That places it squarely in director Psalmayene 24's wheelhouse. This is the fifth production Psalm has directed at Studio, so we're well-acquainted with both his seriousness of purpose and his sense of play. *Purlie Victorious* is a celebration of wit, courage, and community, qualities that Psalm and his creative team have infused our building with this spring. I have little doubt that their spirit is about to infect you, too.

Thanks for being here.

David Muse
Artistic Director

DRAMATURG'S NOTE:

Scan to read more about actor and playwright Ossie Davis's use of satire and comedy to exorcise his anger at life in the Jim Crow South



STUDIO THEATRE

DAVID MUSE
ARTISTIC DIRECTOR

**REBECCA ENDE
LICHTENBERG**
EXECUTIVE DIRECTOR

PRESENTS

PURLIE VICTORIOUS

BY
OSSIE DAVIS

DIRECTED BY
PSALMAYENE 24

Purlie Victorious is presented by arrangement with Concord Theatricals on behalf of Samuel French, Inc. www.concordtheatricals.com

Original Music composed by Guy Davis. Used with permission of Guy Davis and the Barbara Hogenson Agency, Inc. Originally composed for the 2023 Broadway production of *PURLIE VICTORIOUS A Non-Confederate Romp Through the Cotton Patch*, originating producers Jeffrey Richards, Leslie Odom, Jr., and Hunter Arnold.

SDC The Director and/or Choreographer is a member of the Society of Stage Directors and Choreographers, Inc., an independent national labor union.



The scenic, costume, lighting and sound designers in LORT Theatres are represented by United Scenic Artists, Local USA829 of the IATSE.

*This Theatre operates under an agreement between the League of Resident Theaters and Actors' Equity Association, the Union of Professional Actors and Stage Managers in the United States.

SET DESIGNER
ALEXANDER WOODWARD

COSTUME DESIGNER
CIDNEY FORKPAH

LIGHTING DESIGNER
COLIN K. BILLS

SOUND DESIGNER
KATHY RUVUNA

FIGHT CHOREOGRAPHER
ROBB HUNTER

DRAMATURG
ADRIEN-ALICE HANSEL

PRODUCTION STAGE MANAGER
JOHN KEITH HALL*

ASSISTANT STAGE MANAGER
ZORA ALLISON*

DIALECT COACH
KIM BEY

ORIGINAL MUSIC COMPOSED BY
GUY DAVIS

DIRECTOR OF PRODUCTION
JEFFERY MARTIN

TECHNICAL DIRECTOR
RHIANNON SANDERS

CASTING
KATJA ZAROLINSKI, CSA

UNDERWRITTEN BY
SUSAN AND DIXON BUTLER

SHERYL AND RICK DONALDSON

**AMY WEINBERG AND
NORBERT HORNSTEIN**

CAST



PURLIE
VICTORIOUS
JUDSON
WARNER MILLER*



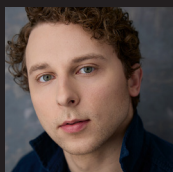
LUTIEBELLE GUSSIE
MAE JENKINS
DANAYA ESPERANZA*



MISSY JUDSON
KELLI BLACKWELL*



GITLOW JUDSON
JASON BOWEN*



CHARLIE COTCHIPEE
JOHN SYGAR *



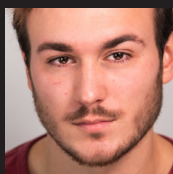
IDELLA LANDY
LIZAN MITCHELL*



OL' CAP'N COTCHIPEE
STEPHEN PATRICK
MARTIN*



THE SHERIFF
ELLIOTT BALES*



THE DEPUTY
JACOB THOMPSON

UNDERSTUDIES

PURLIE & GITLOW
GERRAD ALEX
TAYLOR*

LUTIEBELLE
DESTINY
JENNINGS

MISSY
AJA GOODE

CHARLIE &
THE SHERIFF
JACOB
THOMPSON

IDELLA
ELEANORE
TAPSCOTT

OL' CAP'N
COTCHIPEE
ELLIOTT BALES*

THE SHERIFF &
THE DEPUTY
SAM RODD

SETTING

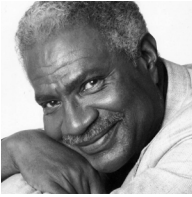
The cotton plantation country of the Old South. The recent past.



*Member of Actors' Equity
Association, the Union of
Professional Actors and Stage
Mangers in the United States

THE VIDEOTAPING OR MAKING OF ELECTRONIC OR OTHER
AUDIO AND/OR VISUAL RECORDINGS OF THIS PRODUCTION
AND DISTRIBUTING RECORDINGS OR STREAMS IN ANY
MEDIUM, INCLUDING THE INTERNET, IS STRICTLY PROHIBITED,
A VIOLATION OF THE AUTHOR(S)'S RIGHTS AND ACTIONABLE
UNDER UNITED STATES COPYRIGHT LAW. FOR MORE
INFORMATION, PLEASE VISIT: [https://concordtheatricals.com/
resources/protecting-artists](https://concordtheatricals.com/resources/protecting-artists)

PLAYWRIGHT



OSSIE DAVIS (1917-2005) was a writer, actor, director, and activist. Born in Cogdell, Georgia, Davis was educated at Howard University before moving to New York to join the Rose McClendon Players. His playwriting credits include *Purlie Victorious* (1961) on Broadway (in which he co-starred with his wife, Ruby Dee) and its musical adaptation, *Purlie* (1970). His additional stage credits include *A Last Dance with Sybil* at New Federal Theatre; *Bingo!* at Amas Repertory Theatre; *Paul Robeson, All American* at Crossroads Repertory Theatre; and *Escape to Freedom* by the Performing Arts Repertory Theatre. As a screenwriter, Davis's credits include *Cotton Comes to Harlem*; *Countdown at Kusini*; and *For Us, The Living: The Medgar Evers Story*. As an actor, Davis made his Broadway debut in 1946 in *Jeb*. His subsequent Broadway credits include *The Wisteria Trees*, *Jamaica* (for which he received a Tony award nomination), *Purlie Victorious*, *The Zulu and the Zayda*, and *I'm Not Rappaport*. Davis's notable screen credits include *Miss Evers' Boys*, *The Client*, *Jungle Fever*, *Do the Right Thing*, *The Cardinal*, and *The Scalphunters*, as well as the television series *Evening Shade*, *King*, and *With Ossie and Ruby*. Davis was inducted into the Theatre Hall of Fame in 1994. With Ruby Dee, Davis was a Kennedy Center honoree and the recipient of SAG's Lifetime Achievement Award.

DIRECTOR



PSALMAYENE 24 is an award-winning director, playwright, and actor. Directing credits include *The Colored Museum*, *Good Bones*, *Flow*, and *Pass Over* at Studio Theatre; *Metamorphoses* at Folger Theatre; *Tempestuous Elements* at Arena Stage; *Necessary Sacrifices: A Radio Play* at Ford's Theatre; *Native Son* at Mosaic Theater Company; and *Word Becomes Flesh* at Theater Alliance. Playwriting credits include *Young John Lewis* (book & lyrics) at Theatrical Outfit; *Monumental Travesties*, *Dear Mapel*, and *Les Deux Noirs* at Mosaic Theater Company; *Out of the Vineyard* at Joe's Movement Emporium; *An Eloquent Fugitive Slave Flees to Ireland* (part of *The Frederick Douglass Project*) at Solas Nua; and *Zomo the Rabbit: A Hip-Hop Creation Myth* at Imagination Stage. His solo play *Free Jujube Brown!* is published in the anthology *Plays from the Boom Box Galaxy: Theater from the Hip-Hop Generation*. Psalm's acting credits include *Ruined* at Arena Stage, *Free Jujube Brown!* at The African Continuum Theatre Company, and HBO's *The Wire*. He is the writer/director of the short film *The Freewheelin' Insurgents*. Psalm is the recipient of two Helen Hayes Awards for Outstanding Direction of a Play and has received the Imagination Award from Imagination Stage. His work has received grants from the Doris Duke Charitable Foundation and the Walt Disney Corporation. Psalm is currently the Andrew W. Mellon Foundation Playwright in Residence at Mosaic Theater Company. He is a member of the Stage Directors and Choreographers Society, Dramatists Guild, and Actors' Equity Association. On social media at @psalmayene24 (Instagram).

2025-2026

EXECUTIVE PRODUCERS

Susan and Dixon Butler

Mark Epstein and Amoretta Hoeber

Sari Hornstein

Norbert Hornstein and Amy Weinberg

David and Joan Maxwell

Teresa and Daniel Schwartz

Bobbi and Ralph Terkowitz

SEASON SPONSORS

Nan Beckley

Trudy Clark

Sheryl and Rick Donaldson

Jeffrey Bauman and

Linda Fienberg

Jinny Goldstein

Susan Gordon

Rick Kasten

Kathleen Kunzer and

Paul Rosenzweig

Judge Albert Lauber and

Prof. Craig Hoffman

Dianne and Herb Lerner

Paul Massey and

Josh O'Harra

Lou Mazawey

Gregory and Belinda Nixon

Craig Pascal

Mark Tushnet and

Elizabeth Alexander



Khalia Muhammad, Sabrina Lynne Sawyer, Jacques Jean-Mary and Shana Lee Hill in *Exception to the Rule*. Photo by Margot Schulman.

BEHIND THE SCENES

Student matinees at Studio bring DC public and public charter high school students to see Studio productions with free tickets and transportation. Students also receive a specially-developed curriculum guide and participate in a post-show conversation with cast members.

“I appreciate coming, I love being closer to the actors because it makes the plot feel more real”

– Student from Bard High School
Early College DC after *Paradise Blue*

**DONATE NOW
TO SUPPORT
PURLIE VICTORIOUS
STUDENT MATINEE
PERFORMANCES:**



ACTORS

WARNER MILLER (Purlie Victorious Judson) is a Brooklyn-born, New Jersey-raised actor and writer making his Studio Theatre debut. His Broadway credits include *The Piano Lesson* and the Tony Award-winning revival of *A Soldier's Play*. Off Broadway credits include *By the Way, Meet Vera Stark* at Signature Theatre Company (NYC) and *Hamlet* at The Public Theater's Shakespeare in the Park. Regional credits include *SOUL: The Stax Musical* at Baltimore Center Stage; *Pullman Porter Blues* at Arena Stage; *The Convert* at McCarter Theatre Center, Goodman Theatre and Center Theatre Group; and *Fences* at Huntington Theatre Company. Film and television credits include *American Gangster*, *Manifest*, *Luke Cage* (Netflix), *Harlem* (Amazon Prime), *Boardwalk Empire* (HBO), *Law & Order*, *Chicago P.D.* (NBC), and *CSI: NY* (CBS).

DANAYA ESPERANZA (Lutie Belle Gussie Mae Jenkins) is making her Studio Theatre debut. Select Off Broadway credits include *O.K.!* at Intar Theatre; *The Merchant of Venice* with Theatre for a New Audience, Shakespeare Theatre Company, and the Royal Lyceum Theatre Edinburgh; *The Comedy of Errors*, for *colored girls who have considered suicide / when the rainbow is enuf*, *The Tempest*, and *Twelfth Night* at The Public Theater; *Buena Vista Social Club* at Atlantic Theater Company; *Breitwisch Farm* with Esperance Theater Company; *Mary Jane* with New York Theatre Workshop; and *Men on Boats* with Playwrights Horizons and Clubbed Thumb. Select regional credits include *Romeo and Juliet* at Shakespeare Theatre Company, *A Midsummer Night's Dream* at Folger Theatre, and *Another Word for Beauty* at Goodman Theatre. Her television credits include *The Blacklist* (NBC) and *Elementary* (CBS). She was trained at The Juilliard School.

KELLI BLACKWELL (Missy Judson) is an actor, teaching artist, and self-published children's author. Her theatre credits include *Downstate*, *The Colored Museum*, and *Fat Ham* at Studio Theatre; *Merry Wives* at

Shakespeare Theatre Company; *Shout Sister Shout!* at Ford's Theatre; *Beauty and the Beast* and *A.D. 16* at Olney Theatre Center; *Crowns* and *Thunder Knocking on the Door* at Creative Cauldron; *A Streetcar Named Desire* and *By the Way, Meet Vera Stark* at Everyman Theatre; *The Wiz*, *Smokey Joe's Cafe*, and *Next to Normal* at ArtsCentric; *Ain't Misbehavin'*, *Dreamgirls*, and *Grease* at Toby's Dinner Theatre; *Hairspray* at Sharon Playhouse; *Once on This Island* at Cortland Repertory Theatre; and the national tours of *Chicago* and *Amazing Grace*. Kelli serves on the senior leadership team and as the Director of Arts Education with Baltimore-based theatre company, ArtsCentric. kellimblackwell.com.

JASON BOWEN (Gitlow Judson) has previously appeared at Studio in *Skeleton Crew*. He appeared on Broadway in *The Play That Goes Wrong*. Other credits include *Goddess* at The Public Theater, *The Half-God of Rainfall* at the New York Theatre Workshop/American Repertory Theater, *Crumbs from the Table of Joy* at Keen Company, *Long Day's Journey into Night* at Audible Theater, *Native Son* at The Acting Company, and *If Pretty Hurts Ugly Must Be a Muhfucka* at Playwrights Horizons. His television and film credits include *Law & Order: SVU* (NBC), *Chicago P.D.* (NBC), *Blue Bloods*, *Madam Secretary*, *Elementary*, *The Good Fight* (CBS), *Mother/Android* (Hulu), *The Upside*, and *What's Your Number?*

JOHN SYGAR (Charlie Cotchipee) is a Helen Hayes-nominated actor who recently appeared on Broadway in *Swept Away*. Some DC credits include *As You Like It* at the Folger Theatre; *Swept Away* at Arena Stage; *Guys and Dolls* at Shakespeare Theatre Company; *Light Years* at Signature Theatre; *Beauty and the Beast*, *A.D. 16*, and *Once* at Olney Theatre Center; *Look Both Ways: A Tale Told in Ten Blocks* at Theatre Alliance and The Kennedy Center; *Spring Awakening* at Round House Theatre; *Peter and the Starcatcher* at Constellation Theatre Company; *Floyd Collins* at 1st Stage; and *Head Over Heels* at Monumental Theatre

Company. Regional credits include *Once* at the Capital Repertory Theatre. John is a member of the Only Make Believe acting company and makes music with the band baseball hat. On social media @jsyg (Instagram).

LIZAN MITCHELL (Idella Landy) is making her Studio Theatre debut. She has appeared on Broadway in *Ohio State Murders*, *Electra*, *Having Our Say*, and *So Long on Lonely Street*. Her Off Broadway credits include *Cold War Choir Practice* at MCC Theater/Clubbed Thumb/Page 73, *The Refuge Plays* at New York Theatre Workshop (NYTW)/Roundabout Theatre Company, *The Half-God of Rainfall* at NYTW/American Repertory Theater, *shadow/land* and *cullud wattah* at The Public Theater, *On Sugarland* at NYTW, *Passage* at SoHo Rep, *Brownsville Song* at LCT3, *Trojan Women* at Harlem Stage and The Classical Theatre of Harlem, and *Ain't Supposed to Die a Natural Death* at The Classical Theatre of Harlem. Her regional credits include *Our Daughters*, *Like Pillars* at Huntington Theatre Company, *Skeleton Crew* at Trinity Rep, *A Raisin in the Sun* at Arena Stage, *Richard III* at Shakespeare Theatre Company, *The Tempest* at The Old Globe, and *Gem of the Ocean* at the Pittsburgh Public Theater. Her film and television credits include *Detroit*, *The Preacher's Wife*, and *The Human Stain*, *Dying for Sex* (Hulu), *Evil* (Paramount+), *Unbreakable Kimmy Schmidt* (Netflix), *The Good Wife* (CBS), *The Wire* (HBO), and *Law & Order* (NBC).

STEPHEN PATRICK MARTIN (Ol' Cap'n Cotchipee) is making his Studio Theatre debut. His previous theatre credits include *An Enemy of the People* and *Prayer for the French Republic* at Theater J; *The Winter's Tale*, *Henry VIII*, and *Hamlet* at Folger Theatre; *Ben Butler* and *Major Barbara* at Washington Stage Guild; *Cat on a Hot Tin Roof* and *Glengarry Glen*

Ross at Round House Theatre; *Two Gentlemen of Verona* and *Lady Windermere's Fan* at Shakespeare Theatre Company; *The Grapes of Wrath* and *A Christmas Carol* at Ford's Theatre; *The Beaux' Stratagem*, *A Raisin in the Sun*, and *Gem of the Ocean* at Everyman Theatre; *The Oresteia*, *Dracula*, and *The Diary of Anne Frank* at Chesapeake Shakespeare Company; and *Christmas Eve* at ExPats Theatre. Stephen is a graduate of the inaugural class of The Shakespeare Theatre Company's Academy at George Washington University. He is also a Washington, DC tour guide.

ELLIOTT BALES (Sheriff; u/s Ol' Cap'n Cotchipee) returns to Studio Theatre where he previously appeared as Senator McDowell in *Kings*. Other DC theater credits include productions at Round House Theatre, Arena Stage, Folger Theatre, Theater Alliance, 1st Stage, The Welders, and Spooky Action Theater. Elliott has also worked extensively with Riverside Theatre in Iowa. His film credits include the feature films *Remote*, *Harmony*, and *The Sultan and the Saint*, and the award-winning short films *A Civil Civil Servant*, *Macabre*, and *Wireless*. He recently released his first book, *The Best Day of My Life: An Answer to Life's Most Frequent Question*. Elliott previously served as a US Army Officer, retiring after 26 years of service.

JACOB THOMPSON (The Deputy; u/s Charlie Cotchipee, The Sheriff) is a DC-based actor and musician making his Studio Theatre debut. His recent theatre credits include *A Midsummer Night's Dream* and *Hamlet* at Syntetic Theater, *A Jumping Off Point* at Round House Theatre (u/s), and *Drunk Romeo and Juliet* with Drunk Shakespeare. He graduated from George Mason University with a BFA in acting and studied at the Stella Adler Studio of Acting. On social media @Jacobteathompson (Instagram).

PRODUCTION

ALEXANDER WOODWARD (Set Designer) is a New York-based designer, organizer, and artist focused on scenic and costume design including *Downstate*, *White Noise*; and *Love*,

Love, Love at Studio; *The Sound Inside* on Broadway; and the ballet *Their Eyes Were Watching God* at Collage Dance Collective. Alexander is the Area Head of the BFA and

MFA Design and Technical Theatre at the University of Connecticut, and serves on the faculty of the David Geffen School of Drama at Yale University. Alexander is an avid proponent for advancing arts advocacy, exploring all aspects of our medium as a form for social change and a tool to shape the environment around us. Alexander is a member of Colt Coeur, and has served on the executive board for Wingspace. MFA from Yale. USA 829. alexanderwoodward.com. [@alexanderwoodwarddesign](https://www.instagram.com/alexanderwoodwarddesign) (Instagram).

CIDNEY FORKPAH (Costume Designer, she/her)'s selected credits include *Paradise Blue* at Studio Theatre; *Guards at the Taj* at NextStop Theatre Company; *The Sea Beyond the Ocean* at The Kennedy Center Theatre for Young Audiences; *Much Ado About Nothing* and *How the Sausage Gets Made* at Faction of Fools; *Fences* at Chesapeake Shakespeare Company; *Tomás and the Library Lady* at Imagination Stage; *Furlough's Paradise*, *American Fast*, and *The Trans-Atlantic Time Traveling Company* at Theatre Alliance; *Fair Play*, *hang*, and *Quilters* at 1st Stage; *Kiss of the Spider Woman*, *Fuenteovejuna*, *Bathing in Moonlight*, *La Revoltosa*, and *KUMANANA! An Afro-Peruvian Musical Revue* at GALA Hispanic Theatre; *Cracking Zeus* at Spooky Action Theater; *The Tempest* at Devil's Isle Shakespeare Co.; and *Diagnosed* at Creative Cauldron. cidneyforkpah.com On social media [@cidneyforkpah](https://www.instagram.com/cidneyforkpah) (Instagram).

COLIN K. BILLS (Lighting Designer; he/him/his) returns to Studio where he previously designed *Problems Between Sisters*, *Clyde's, Cock*, *An Iliad*, *Lungs*, *Circle Mirror Transformation*, *The Year of Magical Thinking*, *Stoop Stories*, *Radio Golf*, *Contractions*, *POP!*, *That Face*, *Autobahn*, *The Death of Meyerhold*, *The Who's Tommy*, *Four*, and *Bat Boy*. He is a Company Member and Board Member at Woolly Mammoth Theatre Company where he has designed over 55 productions. He was a founding member of the devised theater troupe *dog & pony dc*, serving as director, writer, actor, and designer for a dozen new works including *A Killing Game* and *Beertown*. Colin is the recipient of a Princess Grace Award

and three Helen Hayes Awards. He has taught design at Howard University and is a graduate of Dartmouth College.

KATHY RUVUNA (Sound Designer) is a New York-based sound designer and composer who designed *Exception to the Rule* and *John Proctor is the Villain* at Studio. Other recent credits include *Mary Gets Hers* at The Playwrights Realm; *Bernarda's Daughters* at The New Group; *Amani* at National Black Theatre; *Dark Disabled Stories and Self Portraits (Deluxe)* at The Bushwick Starr; *Trouble in Mind* and *The Hot Wing King* at Hartford Stage; *What-A-Christmas!* and *Sweat* at Alley Theatre; *The Lion in Winter*, *Pipeline*, and *Radio Golf* at Everyman Theatre; *The Great Leap*, *I and You*, and *Read to Me* at Portland Stage; *Circle Jerk* at Fake Friends; and *In the Southern Breeze* and *Ni Mi Madre* at Rattlestick Theater. She holds a BFA from The Conservatory of Theatre Arts at Webster University and an MFA from the Yale School of Drama.

ROBB HUNTER (Fight Choreographer) has choreographed 30 Studio productions including *Paradise Blue*, *Downstate*, *Passover* (directed by Psalmayene 24), *White Noise*, *Vietgone*, *Invisible Man*, *Red Speedo* (Helen Hayes [HH] nomination), and *The Walworth Farce* (HH nomination). He also choreographs for Arena Stage, Folger Theatre, Woolly Mammoth (HH award for *Hir*, nomination for *An Octoroon*), Signature Theatre, Ford's Theatre and STC, including the current *Othello*, as well as *King Lear* (HH nomination), *Richard III* (HH nomination), *Guys and Dolls* and others. He is a member of SDC (director/choreographer), AEA, SAG/AFTRA, and is a Fight Master for the Society of American Fight Directors. He is combat instructor for the STC Academy, Fight Choreographer in Residence at American University, and teaching artist for The Studio Theatre Acting Conservatory. robhunter.org and on social media [@DCFightDirector](https://www.instagram.com/DCFightDirector) (Instagram).

ADRIEN-ALICE HANSEL (Dramaturg) is the Literary Director at Studio, where she oversees new work development, supports season planning, and has served as the dramaturg on

roughly 70 plays, including world premieres of *Good Bones*, *John Proctor is the Villain*, *I Hate it Here*, *Red Speedo*, and *Lungs* and productions of *The Heart Sellers*; *Paradise Blue*; *Summer, 1976*; *The Colored Museum*; *Fat Ham*; *Fun Home*; *English*; *Curve of Departure*; and *Wig Out!* among others. Her recent freelance work includes projects for Solas Nua, Musical Theatre Factory, and Young Artists of America. Prior to joining Studio, she spent eight seasons as a member of and then running the Literary Department at the Actors Theatre of Louisville and its Humana Festival of New American Plays. Adrien-Alice holds an MFA from the Yale School of Drama.

JOHN KEITH HALL (Production Stage Manager) Previous Studio credits include *Octet*; *Wipeout*; *Downstate*; *Summer, 1976*; *Exception to the Rule*; *The Colored Museum*; *At the Wedding*; *Espejos: Clean*; *Fun Home*; *Bad Jews*; *Choir Boy*; *Water by the Spoonful*; *Tribes*; *Torch Song Trilogy*; *4000 Miles*; *In the Red and Brown Water*; *The History Boys*; and *The Road to Mecca*. Other DC area credits include productions at Theater J, Woolly Mammoth Theatre Company, Olney Theatre Center, Signature Theatre, and The Kennedy Center. His regional credits include more than 40 productions as Resident Stage Manager at the Barter Theatre as well as Shadowlands Stage, Virginia Musical Theatre, and Contemporary American Theatre Festival.

ZORA ALLISON (Assistant Stage Manager) is a multi-hyphenate theatre artist from Milwaukee, Wisconsin. She is a proud graduate of the Chadwick A. Boseman College of Fine Arts at Howard University with her BFA in Acting with a minor in Spanish. Her production credits include *Octet*; *Paradise Blue*; *Summer, 1976*; and *The Colored Museum* at Studio Theatre, and *Guys and Dolls* at Shakespeare Theater Company. She recently served as the 2024/2025 Theatre Education Apprentice at Imagination Stage, where she also is an early childhood educator.

KIM BEY (Dialect Coach) is an actor, voice/dialect coach, and educator. Her vocal credits include *Paradise Blue*, *In the Red and Brown Water*, *Invisible Man*, and *Passing Strange* at

Studio Theatre; *Red Velvet* and *The Amen Corner* at Shakespeare Theatre Company; *Detroit '67* and *The Scottsboro Boys* at Signature Theatre (DC); *Fela!* at Olney Theatre Center and Round House Theatre; *Once on this Island* and *School Girls, or the African Mean Girls Play* at Round House Theatre; *An Octoroon* and *The Convert* at Woolly Mammoth; *Toni Stone* at The Huntington Theatre Company; *Three Little Birds* at the Hangar Theatre Company and Adventure Theatre MTC; *Queens Girl in the World* at Theater J; *Queens Girl in Africa* at Mosaic Theater Company and Clackamas Repertory Theatre; and *Queens Girl: Black in the Green Mountains* at Everyman Theatre. Kim is a Certified Associate Teacher of Fitzmaurice Voicework®.

GUY DAVIS (Composer) has been active for many years as a musical performer, composer, writer, director, actor, and creative artist. Two of his recordings have received Grammy nominations. In 2023, his music was heard on Broadway in between the scenes of the revival of *Purlie Victorious*. In 2009, he appeared live on the Broadway stage playing a harmonica in the revival production of the musical *Finnian's Rainbow*. Guy continues writing and recording; his latest work is an EP soon to be released, entitled "Slamdooky."

KATJA ZAROLINSKI, CSA (Casting) is serving at the Studio Theatre NYC Casting Director for the 2025/2026 season. Katja is a New York-based casting director handling productions for theater, film and television. Previous casting work includes Broadway, off Broadway and regional productions at Alley Theatre, Arena Stage, Asolo Repertory Theatre, Baltimore Center Stage, Barrington Stage Company, Cape Playhouse, Chicago Shakespeare Theater, City Theatre Company, Contemporary American Theater Festival, Crossroads Theatre Company, Everyman Theatre, George Street Playhouse, Goodspeed Musicals, Guthrie Theater, Irish Repertory Theatre, Kansas City Repertory Theatre, Merrimack Repertory Theatre, Mosaic Theatre, Olney Theatre Center, Oregon Shakespeare Festival, Pittsburgh CLO, PlayMakers

Repertory Company, Pittsburgh Public Theater, The Repertory Theatre of St. Louis, Seattle Rep, Shakespeare & Company, Shakespeare Theatre Company, Signature Theatre (DC), South Coast Repertory, TheaterWorks Hartford, Virginia Stage Company, Virginia Theatre Festival, and many more.

STUDIO THEATRE is a national leader in the production of contemporary plays. Over 46 years and more than 425 productions, Studio has remained committed to core distinguishing characteristics: deliberately intimate spaces; excellence in acting and design; and seasons that feature many of the most significant playwrights of our time. Studio's seasons are intentionally diverse and eclectic, featuring buzzworthy plays from today's hot writers,

groundbreaking world premieres, and reinvigorated contemporary classics. Studio also incubates and develops new work, nurtures the next generation of arts leaders, and proactively engages with its community through a wide array of initiatives, including concentrated efforts to proactively dismantle barriers that have excluded people from joyful participation in our art form. Studio's location, rich history, unique venues, and commitment to artistry have made it a regional landmark, where audiences find the best that contemporary theatre has to offer.

PRODUCTION STAFF

ASSISTANT DIRECTOR
NAYANNA SIMONE

ASSOCIATE SET DESIGNER
TUCKER TOPEL

ASSISTANT COSTUME DESIGNER
JILLIAN SKARA

WIG DESIGNER
LARRY PETERSON

SCENIC CHARGE
MEG ZETTELL

LIGHT AND SOUND BOARD
OPERATORS
EVALYN PEACEY
MIA MARTINEZ

INTIMACY COORDINATOR
SIERRA YOUNG

REDUCTION MENTAL HEALTH
SUPPORT
SARA MINDEL, LICSW

PROPERTIES SUPERVISOR
AMY KELLETT

WARDROBE
MEL MADER

PRODUCTION ASSISTANTS
LILA-ROSE ROBERTS
AUDREY KLOSTERMAN

PROGRAM GRAPHIC DESIGNER
BILL GEENEN

COMMUNITY PARTNERS



HOWARD
UNIVERSITY

Howard University



The National Black Cultural
Information Trust, Inc.



State of DC Black Theatre



LEADERSHIP

DAVID MUSE
ARTISTIC DIRECTOR

REBECCA ENDE LICHTENBERG
EXECUTIVE DIRECTOR

BOARD OF TRUSTEES

Rob Batarla
CHAIR

Renée R. Matalon
VICE CHAIR

Navroz Gandhi
TREASURER

Belinda Elvan Nixon
SECRETARY

Marc Albert

Rob Batarla

Susan Butler

Rick Donaldson

Dr. Mark Epstein

Linda Fienberg

Mark Foster

Navroz Gandhi

Yinuo Geng

Jinny Goldstein

Susan L. Gordon

John Guggenmos

Kathleen Kunzer

Rosenzweig

Sharon Lowe

Lori McFarling

Larry Naake

Belinda Nixon

Tuknekah Noble

Jamie Pate

Judy Pomeranz

Jennifer Randolph

Dusty Riddle

The Honorable Carol
Schwartz

Teresa Schwartz

Luz Blancas Sevak

Barney Shapiro

Steve Skalet

Aimee Smart

Bobbi Terkowitz

Terry Theologides

Robert Tracy

Amy Weinberg

Melissa Wiley

EX-OFFICIO

David Muse

Rebecca Ende Lichtenberg

HONORARY TRUSTEES

The Honorable Ann Brown
and Dr. Ted Poritz

Otho Eskin and
Therese Keane

Sari Hornstein

Robert and Arlene Kogod

David and Joan Maxwell

Craig Pascal

EMERITUS TRUSTEES

Jon Danforth

Jean Grier

Michael Higgins

Albert Lauber

Ginny McArthur

Gerald Rosberg

FOUNDING ARTISTIC DIRECTOR

Joy Zinoman

FELLOWS-IN-RESIDENCE PROGRAM

The Studio Fellows-in-Residence program prepares future artists and administrators for a successful career in the arts through a rigorous, hands-on training experience over the course of a full theatrical season.

PROGRAM SPONSORS

Susan and Dixon Butler

Linda Fienberg and Jeffrey Bauman

Sari Hornstein

Teresa and Dan Schwartz

Amy Weinberg and Norbert Hornstein

ARTISTIC**JESS CHAYES**

Associate Artistic Director

ADRIEN-ALICE HANSEL

Literary Director

Commissioned Artists

MARGOT BORDELON**STEVE BROADNAX III****SARAH DELAPPE****ERIKA DICKERSON-
DESPENZA****MOLLY SMITH METZLER****KATE EASTWOOD NORRIS****AK PAYNE****TYNE RAFAELI****GEOFF SOBELLE**

Readers Circle

NORA GEFFEN**MICHELLE MARIE LYNCH****FRANCESCA SABEL****PRODUCTION****JEFFERY MARTIN**

Director of Production

CLARICE BERARDINELLI

Rentals & Events Manager

ANAHITA SEPEHRIAssistant Production
Manager**BRANDEE MATHIES**

Costume Shop Manager

CHRISTION JONESLighting & Sound
Supervisor**RHIANNON SANDERS**

Technical Director

SARAH MCCARTHY

Master Carpenter

DEVELOPMENT**BIANCA BECKHAM**

Director of Development

HANNAH HESSEL RATNERAssociate Director of
Development**DARCY FOWLER**Development Operations
Manager**EMMA CUMMINGS**Donor Relations and Special
Events Coordinator**GENERAL
MANAGEMENT****KATHRYN HUEY**Director of Finance &
Administration**AMANDA ACKER**

Business Director

CORY MCCONVILLE

Operations Manager

EVE PARENTManagement &
HR Coordinator**SYDNE LYONS**

Business Associate

**MARKETING AND
COMMUNICATIONS****HILARY JUDIS**Director of Marketing and
Communications**REBECCA FISCHLER**Associate Director of Marketing
and Communications**SHANE OLIVER**

Audience Services Director

JEFF KLEIN

Audience Services Manager

GABBY WOLFE

Marketing Insights Manager

AVI LITTKY

Digital Marketing Associate

Lead Box Office Associates

MARTHA HAHN**SYDNE LYONS**

Box Office Associates

MAYA BROWN**DREW SHARPE**

Lead House Managers

ZORA ALLISON**BRINDEN BANKS****MARK BERRY****DANIEL BINDER****JAIDA GILLESPIE****MARCEL HARTLEY****BRIAN KLOSE****STEPHANIE LANDRY****KAIYA LYONS****CHRISTIAN MORENO****ALEJANDRO OMS****GAELYN SMITH****ELIZA SNIPES****ASH TROTTER**

House Managers

RUTH ATTA**SAVANNAH BLACKWELL****ARYSSA DAMRON****SPIKE DICKERSON****BOB REEG****ERIN SHORT****MCKENNA CANTY****2025-26 FELLOWS****PHILIP CULLEN**PRODUCTION & EVENTS
MANAGEMENT FELLOW**JOE FOX**TECHNICAL DIRECTION
FELLOW**SARAH JOHNSON**

MARKETING FELLOW

MIA MARTINEZSOUND & PROJECTION
FELLOW**EVALYN PEACEY**

ELECTRICS FELLOW

MAEVE REILLYCOMPANY MANAGEMENT
FELLOW**LILA-ROSE ROBERTS**STAGE MANAGEMENT
FELLOW**NAYANNA SIMONE**

DIRECTING FELLOW

ELLA TALERICOARTISTIC PRODUCING
FELLOW**CAMERON ZAKRESKI**

DEVELOPMENT FELLOW

THANK YOU TO OUR SUPPORTERS

ARTISTIC DIRECTOR'S CIRCLE

Aron Family Foundation
Rob Batarla
Beech Street Foundation
Nan Beckley
Susan and Dixon Butler
Trudy H. Clark
Sheryl and Rick Donaldson
Karen Doyne
Dr. Mark Epstein and Amoretta Hoeber
Hope and Mark Foster
The Galena-Yorktown Foundation
Wendy and William Garner
Jinny Goldstein
Susan L. Gordon
John Guggenmos and Timur Loynab
John and Meg Hauge
Donald E. Hesse and Jerrilyn Andrews
Sari Hornstein
Rick Kasten
Kathleen Kunzer and Paul Rosenzweig
Lynn Bonde and Richard Lehmann
Herb and Dianne Lerner
Jim and Sharon Lowe
Marilyn Marcossou
Paul Massey and Josh O'Harra
Renee Matalon and Stephen Marcus
Joan and David Maxwell
Lou Mazaway
Larry and Joan Naake
Belinda and Gregory Nixon
Craig Pascal
Jamie Pate
Judy Pomeranz
Irene Roth and Vicken Poochikian
Samantha Sault
Barney and Susan Shapiro
Steve and Linda Skalet
Ed and Andy Smith
Bobbi and Ralph Terkowitz
Terry Theologides and Deb Rodriguez
Norbert Hornstein and Amy Weinberg

OVATION CIRCLE

Marc Albert and Stephen Tschida
Dr. Stewart Aledort and Dr. Sheila Rogovin
Jeremias Alvarez
Dean Amel and Terry Savela
Rob Batarla
Peter Bieger and Demian Gaiteri
The Honorable Ann Brown
John Chester and Betty Shepard
Louis and Bonnie Cohen
E&B Family Trust
Anne and Marc Feinberg
Gerard Fiala
Navroz and Perinaaz Gandhi
Yinuo Geng
George Wasserman Family Foundation
Alyse Graham
In memory of Herb and Nancy Milstein
Frona Hall
Larry Haller and Sherry Marts
Kirby Heller and Steve Dennett
Margaret Hennessey
Virginia A. McArthur and E.C. Michael Higgins
Richard and Pamela Hinds
Linda Lurie Hirsch
John Horman
Lynne Horning
Hal Jones and Anne-Lise Auclair-Jones
Leonade D. Jones
John Keator and Virginia Sullivan
Kay Kendall and Jack Davies
Helen and David Kenney
Kyle Kerr
Arlene and Martin Klepper
Judy and Peter Blum Kovler Foundation
Barry Kropf
Vinca and David LaFleur
Stephen A. Saltzburg and Susan Lee
The Lewis Butler Foundation
Eve A. Lilley
Karen and Daniel Mayers
Morningstar Philanthropic Fund
Morrissette Family Foundation
Zell Murphy and Mark Wasson
Carl and Undine Nash
Tuknekah Noble
Melanie and Larry Nussdorf
Daniel Pattenden
Merrie Pearl and Dylan Slotemaker

Carl and Margaret Pfeiffer
Daniel Pink
Michael and Penelope Pollard
Ane Powers
Lutz Alexander Prager
Timothy Price
Peter S. Reichertz
Dusty Riddle and Daniel Aune
Jennifer Robb
Lucinda Romberg
Sara Rosenbaum and Dan Hawkins
Steven M. Rosenberg and Stewart C. Low III
Dr. April Rubin and Mr. Bruce Ray
Sandra and Gilbert Oken Foundation
Sandra and Albert Schlachtmeyer
The Honorable Carol Schwartz
Amit Sevak and Luz Blancas Sevak
Linda and Stanley Sher
David and Peggy Shiffrin
Aimee Smart and Shefa Gordon
Spor Family Fund
Dave Steadman and Daphne Kiplinger
Alan Asay and Mary Sturtevant
Robert Tracy and Martha Gross
Mark Tushnet and Elizabeth Alexander
Kazuko and Yoshine Uchimura
Steve Verna
Eric R. and Laura M. Wagner
Anne and Ernest Wallwork
Gregory A. Williams
Zack Wisniewski and Chris Hanes
Beverly and Christopher With
Mary and Michael Young
Judy and Leo Zickler

OPEN CIRCLE

Linda Adams
Marcia and Larry Arem
Scott Barash
Liz Barratt-Brown
R. Joseph Barton
Scott Douglas Bellard
Allan and Michele Berman
Jessica Berman and Michael Fernandez
Loren and Peter Brandman
Sue and Joe Bredekamp
Michael Burke and Carl Smith
Keith and Kristen Burnham
Blain and Peg Butner
E S Carton
Jessica Case
Dr. Morris J. Chalick

Mady Chalk
 Cecilia Chandler
 Nancy Chasen and Don Spero
 Brian Collins
 Will and Carol Cooke
 David Cooper and Stephen Nash
 William Corin
 Drew Courtney and Nick Berning
 Nancy Crisman
 Michael Crosswell
 Johanna Cummings
 Richard and Janet Dante
 Laurie Davis and Joseph Sellers
 Nancy Deck & Michael Gross
 John Driscoll
 Ellen and Fred Ende
 Michael Klein and Joan Fabry
 Wayne Farmer
 Whitney Farmer
 The Manny and Ruthy Cohen Foundation
 Carole Feld and David C. Levy
 James A. Feldman and Natalie Wexler
 Michael S. Fernandez
 Leo S. Fisher & Susan J. Duncan Gift Fund
 Trudy Fleisher
 Sarah Hope Franks and Michael O. Moore
 Gargee Ghosh
 Amy C. Gilbert and Steven Newpol
 Janice Goldblum
 Joyce and Richard Gordon
 Sally W Gresham
 David and Jean Heilman Grier
 John G. Guffey
 Gail Gulliksen
 Jack Hairston Jr.
 Bonnie Hammerschlag
 William and Wendell Hausdorff
 James Heegeman
 Sonya Hepinstall
 Steve and Barbara Hirsch
 Melane K Hoffmann
 Marvene Horwitz

John and Gail Howell
 Michel Jichlinski
 Jason Johnston
 Thomas Joseph
 Andrew Joskow and Lisa Sockett
 Terrance Kalahurka
 Jeremy and Marnie Kaplan
 Robert L. Kimmins
 Jan Klein
 Leslie Kogod
 Michael W. Kolakowski
 Patricia and John Koskinen
 Bette and William Kramer
 Diane Kresh
 Thomas F. Lahr
 Catherine Landry and Henry Brothers
 Carrie Langsam
 Robert Lanman and Debra Bergoffen
 Chad Lash & Caryn Wagner
 James Leonard
 Janet Lewis
 Romana Li and Bruce Bartels
 Lifland-Radmer Fund
 Douglas Lingenfelter
 Shawn C. Helm and J. Thomas Marchitto
 Dan and Susan Mareck
 Martha Washington Straus-Harry H. Straus Foundation
 Lynne Martin
 Dayna Bowen Matthew
 Anne Mayerson
 Bruce and Mara Mayor
 Anna McGowan
 David McKinney
 Carla and Mark Meister
 Eddie Adkins & Jeff Mendell
 The Honorable Phil Mendelson
 Jeffrey Menick
 Lisa Miller
 Richard and Ellen Miller
 Gary Mintz
 Jane Molloy
 The Mufson Family Foundation
 Lou and Sherry Nevins
 Martha Newman
 Ray Olson
 Jeanie Osburn

Linda and Peter Parshall
 Stan Peabody
 Evelyn Sandground & Bill Perkins
 Charles Pfleeger and Shari Lawrence Pfleeger
 Teresa Plotkin
 Michael and Deborah Poliner
 Murray Pollack and Joyce Campbell
 Roger Reeves and Ruth Lammert-Reeves
 Mervin Richard
 Julie F. Rios
 The Henry and Susan Rose Family Fund
 Lynn Rothberg
 Linda and William Rule
 Frank Sammartino and Ellen Starbird
 Christina Samson
 Linda B. Schakel
 Mady Schichor
 Gail Schonfeld
 Scott B. Schreiber and Evelyn Jaffe Schreiber
 Linda Schwartz
 Richard Tucker Scully and Lee A. Kimball
 Jennifer Shea and Peter Bruns
 Stuart Sirkin & Arlene Farber Sirkin
 John and Ann Skeelee
 Lauren Kogod and David Smiley
 Cecile Srodes
 David Stevens and Linda Wymbms
 Jeanne Stovroff
 Thomas Strikwerda and Donna Stienstra
 Aileen and Jack Sullivan
 Grant P. and Sharon R. Thompson
 Dilge Timocin
 Drs. Chuck & Cécile Toner
 Margot Tripi
 Robert O. Tyler
 Tessa van der Willigen and Jonathan Walters
 Scott Barash and Gayle Wald
 Elisse Walter and Ronald Stern
 Ronald Walters

Gloria Weissberg
 Carolyn L. Wheeler
 Elizabeth B. White
 Jack and Sue Whitelaw
 Annelie Wilde
 Jeffrey Wilder
 Melissa Wiley
 Sandy and Jon Willen
 Bruce Williams
 Misti Mukherjee and Mike Williams
 Linda Winslow
 Robert I. Wise Jr
 Paul Wolfson
 Richard Wormsbecher
 Allison and Doug Zabransky
 Ed and Judy Zareski

CORPORATE, FOUNDATION, AND GOVERNMENT SUPPORT

Anonymous
 DC Commission on the Arts and Humanities
 EventsDC
 The Max and Victoria Dreyfus Foundation
 Milton and Dorothy Sarnoff Raymond Foundation
 The Morris and Gwendolyn Cafritz Foundation
 Morgan Fund at Seattle Foundation
 National Capital Arts and Cultural Affairs Program and the US Commission of Fine Arts
 National Endowment for the Arts
 The Nora Roberts Foundation
 Paul M. Angell Family Foundation
 Share Fund
 Shapiro Family Foundation
 Shubert Foundation

*In memoriam

This list represents contributions of \$500 or more made to the annual fund as of April 15, 2026. Every effort has been made to ensure the accuracy of this listing. For more information, please contact the Development Department at 202.919.3712.

BEGINS JUNE 4

“FRANK, FUNNY, AND OCCASIONALLY FILTHY”

–THE INDEPENDENT

“SERIOUSLY FUNNY”

–THE GUARDIAN

After years of swiping, a permanently single, professionally neurotic stand-up finally meets Mr. Right – and then does everything wrong. Strap in for a delightfully dark journey through self-awareness and self-sabotage as he decides whether love is worth the price of a killer punchline. This darkly comedic one-man show delves into the anxieties of modern life with razor-sharp wit, tackling everything from the fear of intimacy to the terror of vulnerability.



FEELING AFRAID AS IF SOMETHING TERRIBLE IS GOING TO HAPPEN

By
**MARCELO
DOS SANTOS**
Directed by
MATTHEW XIA

