

OCTET

STUDIO



# FRIENDS,

Here's a surprising fact: *Octet* is the first Dave Malloy production to make it to the Washington area. I say surprising because Dave has fast become a theatrical megaforce. Best known for *Natasha, Pierre & the Great Comet of 1812*, which opened on Broadway in 2016 and was nominated for 12 Tony Awards, Dave is widely acknowledged to be one of the most innovative and influential musical theatre makers working in the American theatre. Like one of *Octet*'s cast members said on the second day of rehearsals, "Nobody's doing it like Dave Malloy."

Because of his idiosyncratic and brainy choice of subjects, I like to think of Dave as a Tom Stoppard of the musical theatre. *Preludes* is a musical fantasia set in the mind of the composer Sergei Rachmaninoff. *Ghost Quartet* is a song cycle of scary stories spanning seven centuries. *Natasha, Pierre & the Great Comet* is an adaptation of 70 pages of Tolstoy's *War and Peace*. You get the idea. Perhaps unsurprisingly given these topics, his lyrics are often dense and reference-packed. An unapologetic genre-mixer, Dave's music is at once sophisticated, experimental, and irreverent.

The first version of *Octet* premiered in 2019, and represented a departure for Dave. Topically, he moved from the historical and intellectual to the contemporary and everyday. And musically, he set aside the instrument-swapping, electronics, and sonic overload that had become Malloy signatures and instead embraced a radical musical constraint: a *cappella* singing.

It's an unlikely idea: creating play about our relationship to cyberspace with very little technology. But that's precisely the point: the naked human voice is the most analog of musical forms, about as low-tech as you can get. I think it's a brilliant formal choice for a musical about the justifiable fear that our creativity, spirituality, and ability to connect meaningfully with one another is being devoured by runaway technology.

Since the reopening of the Victor Shargai Theatre in 2022, we've staged productions here in all of the essential configurations (proscenium, thrust, alley, immersive) except for in-the-round, so *Octet* represents the completion of a circuit. It struck me as a terrific play to stage this way, because this support group for the tech-addicted is one in which most all of us could be members!

It's my pleasure to invite you to unplug and let Dave's musicality and the talent of this ensemble transport you. We're glad you're here.

Yours,

David Muse  
Artistic Director

Read a note from  
our dramaturg  
about Dave  
Malloy's take on  
intimacy in the  
era of the infinite  
scroll:



# STUDIO THEATRE

**DAVID MUSE**  
ARTISTIC DIRECTOR

**REBECCA ENDE  
LICHTENBERG**  
EXECUTIVE DIRECTOR

## PRESENTS

# OCTET

MUSIC, LYRICS, BOOK,  
AND VOCAL  
ARRANGEMENTS BY  
**DAVE MALLOY**

DIRECTED BY  
**DAVID MUSE**

World Premiere commissioned and produced  
by Signature Theatre, New York City. Paige  
Evans, Artistic Director; Harold Wolpert,  
Executive Director.

West Coast Premiere presented by Berkeley  
Repertory Theatre and Signature Theatre.

Produced by special arrangement with Diana  
DiMenna and Plate Spinner Productions.

*Octet* is presented by special arrangement  
with Paradigm Talent Agency LLC.



The Director and/or Choreographer  
is a member of the Society of Stage Directors and  
Choreographers, Inc., an independent national  
labor union.



The scenic, costume, lighting,  
and sound designers in LORT Theatres are  
represented by United Scenic Artists, Local  
USA829 of the IATSE.

This Theatre operates under an agreement  
between the League of Resident Theaters  
and Actors' Equity Association, the Union of  
Professional Actors and Stage Managers in the  
United States.

MUSIC DIRECTOR  
**BEN MOSS**

SET DESIGNER  
**DEBRA BOOTH**

COSTUME DESIGNER  
**MOYENDA KULEMEKA**

LIGHTING DESIGNER  
**MARY LOUISE GEIGER**

SOUND DESIGNER  
**NICK KOURTIDES**

DRAMATURG  
**MICHELLE MARIE LYNCH**

MOVEMENT COORDINATOR/  
CHOREOGRAPHER  
**ASHLEIGH KING**

IEM DESIGN  
**OR MATIAS**

PRODUCTION STAGE MANAGER  
**JOHN KEITH HALL\***

DIRECTOR OF PRODUCTION  
**JEFFERY MARTIN**

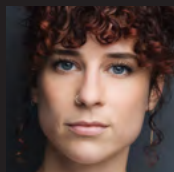
TECHNICAL DIRECTOR  
**RHIANNON SANDERS**

CASTING  
**KATJA ZAROLINSKI, CSA**

UNDERWRITTEN BY  
**MARK EPSTEIN AND AMORETTA  
HOEBER**

**SARI HORNSTEIN**  
**CRAIG PASCAL**

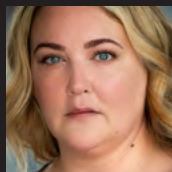
# CAST



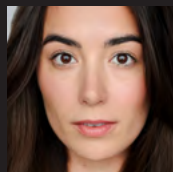
JESSICA  
**CHELSEA  
WILLIAMS\***



HENRY  
**ANGELO  
HARRINGTON II\*\***



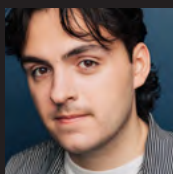
PAULA  
**TRACY LYNN  
OLIVERA\***



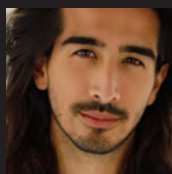
KARLY  
**ANA MARCU\***



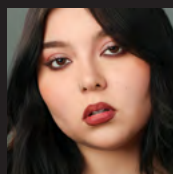
ED  
**JIMMY KIEFFER\***



TOBY  
**AIDAN JOYCE\***



MARVIN  
**DAVID TOSHIRO  
CRANE\***



VELMA  
**AMELIA  
AGUILAR\***

## UNDERSTUDIES

AVA & JESSICA  
**AVA WILSON**

HENRY & ED  
**SAM RODD**

TOBY & MARVIN  
**ANTHONY DE  
SOUZA**

PAULA & KARLY  
**SYDNE LYONS**

---

## SETTING

A church basement

---



\*Member of Actors' Equity  
Association, the Union of  
Professional Actors and Stage  
Mangers in the United States

+Dance Captain

THE VIDEOTAPING OR AUDIO AND/OR VISUAL  
RECORDING OF THIS PRODUCTION IS A VIOLATION OF  
UNITED STATES COPYRIGHT LAW AND AN ACTIONABLE  
FEDERAL OFFENSE.

# PLAYWRIGHT



**DAVE MALLOY** is a New York-based award-winning composer, writer, performer, and orchestrator. He has written music for 18 musicals, including *Three Houses*; Roald Dahl's *The Witches*; *Moby-Dick*; *Octet*; *Preludes*; *Ghost Quartet*; *Natasha, Pierre & The Great Comet of 1812* (12 Tony nominations; six Olivier nominations); *Little Bunny Foo Foo*; *Black Wizard / Blue Wizard*; *All Hands*; *Three Pianos*; *Beardo*; *Beowulf*; *A Thousand Years of Baggage*; *The Sewers*; *Sandwich*; *Clown Bible*; and *(The 99-cent) Miss Saigon*. His accolades include three OBIEs, a Smithsonian Ingenuity Award, a Drama Desk Award, a Lucille Lortel Award, the Richard Rodgers Award, an ASCAP New Horizons Award, and a Jonathan Larson Grant. Upcoming: *Black Swan* at American Repertory Theater (A.R.T.) from May 26, 2026, through June 28, 2026. [davemalloy.com](http://davemalloy.com)

# DIRECTOR



**DAVID MUSE** is in his sixteenth season as Artistic Director of Studio Theatre where he has directed *Downstate*; *Love, Love, Love*; *Fun Home*; *People, Places & Things*; *Cock* (the in-person and digital productions); *The Children*; *The Remains*; *The Effect*; *The Father*; *Constellations*; *Chimerica*; *Murder Ballad*; *Belleville*; *Tribes*; *The Real Thing*; *An Iliad*; *Dirt*; *Bachelorette*; *The Habit of Art*; *Venus in Fur*; *Circle Mirror Transformation*; *reasons to be pretty*; *Blackbird*; *Frozen*; and *The Intelligent Design of Jenny Chow*. As Studio's Artistic Director he has overseen over 125 productions; established Studio R&D, a new work incubator that has commissioned over 40 artists; created The Cabinet, Studio's artist advisory body; and envisioned and oversaw Open Studio, a \$20 million expansion and upgrade of Studio's four-theatre complex. Previously, he was Associate Artistic Director of the Shakespeare Theatre Company, where he has directed nine productions, including *Richard III*, *Henry V*, *Coriolanus*, and *King Charles III* (a co-production with American Conservatory Theater and Seattle Rep). Other directing projects include *Frankie and Johnny in the Clair de Lune* at Arena Stage, *The Bluest Eye* at Theatre Alliance, and Patrick Page's *Swansong* at the New York Summer Play Festival. He has helped to develop new work at numerous theatres, including New York Theatre Workshop, Geva Theatre Center, Arena Stage, New Dramatists, and The Kennedy Center. David has taught acting and directing at Georgetown, Yale, and the Shakespeare Theatre Company's Academy of Classical Acting. Productions he has directed have received 58 Helen Hayes Award nominations, including 9 for Outstanding Direction, and he is a DC Mayor's Arts Award recipient. David is a graduate of Yale University and the Yale School of Drama.

# 2025-2026

## EXECUTIVE PRODUCERS

Susan and Dixon Butler

Mark Epstein and Amoretta Hoeber

Sari Hornstein

Norbert Hornstein and Amy Weinberg

David and Joan Maxwell

Teresa and Daniel Schwartz

Bobbi and Ralph Terkowitz

## SEASON SPONSORS

Nan Beckley

Trudy Clark

Sheryl and Rick Donaldson

Jeffrey Bauman and

Linda Fienberg

Jinny Goldstein

Susan Gordon

Rick Kasten

Kathleen Kunzer and

Paul Rosenzweig

Judge Albert Lauber and

Prof. Craig Hoffman

Dianne and Herb Lerner

Paul Massey and

Josh O'Harra

Lou Mazawey

Gregory and Belinda Nixon

Craig Pascal

Mark Tushnet and

Elizabeth Alexander



Khalia Muhammad, Sabrina Lynne Sawyer, Jacques Jean-Mary and Shana Lee Hill in *Exception to the Rule*. Photo by Margot Schulman.

## BEHIND THE SCENES

Student matinees at Studio bring DC public and public charter high school students to see Studio productions with free tickets and transportation. Students also receive a specially-developed curriculum guide and participate in a post-show conversation with cast members.

**STUDENT MATINEE SPONSORS**  
THE SHAPIRO FAMILY FOUNDATION  
DC COMMISSION ON THE ARTS AND HUMANITIES

**"I appreciate coming, I love being closer to the actors because it makes the plot feel more real"**  
– Student from Bard High School  
Early College DC after *Paradise Blue*

**DONATE NOW TO SUPPORT OCTET'S STUDENT MATINEE PERFORMANCES:**



# ACTORS

**CHELSEA WILLIAMS** (Jessica) is an actor and voiceover artist based in Brooklyn, NY. Her Broadway/national tours include *In Transit*, *Mamma Mia!*, *Jesus Christ Superstar*, and *Irving Berlin's White Christmas*. Select theatre credits include *Waitress: The Musical* at Ogunquit Playhouse, *Life After* at Goodman Theatre, *Grease* at Maine State Music Theatre, and *Mamma Mia!* at Casa Mañana. She recently appeared on *Elsbeth* (CBS) and can be heard in various national commercials and video games. She holds a BFA from Emerson College. On social media @chelseawillyums (Instagram).

**ANGELO HARRINGTON II** (Henry/Dance Captain) is a triple-threat performer making his Studio Theatre debut. His theatre credits include *Red Pitch*, *Senior Class*, and *Frozen* at Olney Theatre Center; *Sister Act* at Summer Rep Theatre Festival; *Ma Rainey's Black Bottom* and *The Scottsboro Boys* at ArtsCentric; and *A Chorus Line* at Toby's Dinner Theatre. On social media @angeloharringtonii (Instagram).

**TRACY LYNN OLIVERA** (Paula) returns to Studio after appearing in 2013 production of *Bachelorette*. She performed on Broadway in the 2009 revival of *Ragtime*. Her regional credits include *Candide* at the Goodman Theatre in Chicago. She has performed in the DMV area at Signature Theatre, Arena Stage, Ford's Theatre, the Kennedy Center, Olney Theatre Center, Round House Theatre, and many other local area venues. She is a two-time Helen Hayes Award Winner (for Outstanding Lead Actress in a Musical and Outstanding Supporting Actress in a Musical), and a 12-time nominee. She has sung in concert at Signature Theatre, Olney Theatre Center, Black Rock Center for the Performing Arts, as well as venues in Chicago, Sarasota, and Rehoboth Beach. Tracy is an adjunct professor at both Catholic University and American University. Her debut album, *Because*, is available on iTunes and Spotify.

**ANA MARCU** (Karly) is an actor, singer, musician, and owner of Ivory Voice and Piano

in Brooklyn, NY. Her Off Broadway credits include *Georama* at Playwrights Horizons and *90210! The Musical!* at Theatre 80. Her regional credits include *Sunny Afternoon* at Chicago Shakespeare Theater; *Once* at Syracuse Stage and California Center for the Arts, Escondido Theatricals; *Jersey Boys* at Theatre Aspen; *Million Dollar Quartet* and *The Old Man and the Old Moon* at South Coast Repertory; *Almost Heaven* at Weston Theater Company; *Man of La Mancha* at Arizona Theatre Company; *As You Like It* at Great River Shakespeare Festival; and *A Christmas Carol* at Alabama Shakespeare Festival. Touring credits include *Disney on Classic* in Japan. Ana was in the feature film *My Hero*. She received a BFA from Syracuse University. On social media @a\_marcu. [anamarcu.com](http://anamarcu.com).

**JIMMY KIEFFER** (Ed) is an actor based in New York. His Off Broadway credits include *Peter and the Starcatcher* at New World Stages, *A Christmas Carol* at Canal Park Playhouse, and *Scapin* at Theatre Row. Regionally, he has performed in *A Midsummer Night's Dream* at the Guthrie Theater and Oregon Shakespeare Festival, *The History Plays* at the Guthrie Theater, *Cyrano de Bergerac* at Kansas City Repertory Theatre, *Candide* at Alliance Theatre, *A Funny Thing Happened on the Way to the Forum* at Pittsburgh Public Theater, *The 39 Steps* at the Repertory Theatre of St. Louis, and *Victor/Victoria* at Theatre Under The Stars. On television, he appeared on *Law & Order* (NBC) and *Criminal Minds* (CBS). Film credits include *Ocean's Eight* and *Ricki and the Flash*. He holds an MFA in Acting from the Professional Actor Training Program at the University of North Carolina at Chapel Hill. On social media @thejimmykieffer (Instagram). [jimmykieffer.com](http://jimmykieffer.com).

**AIDAN JOYCE** (Toby) is a New York-based theatre artist and Mets fan originally from Montclair, NJ, making his Studio Theatre debut in *Octet*. He recently appeared in the world premiere of *A Wrinkle in Time* at Arena Stage. Other credits include Heather Christian's *None*:

*A Practical Breviary* at New York Stage and Film, *Rent* at Southern Plains Productions, and *Spring Awakening* at Monumental Theatre Company, which earned him a Helen Hayes Award nomination for Outstanding Lead Performer in a Musical. He holds a BFA in Musical Theatre from Shenandoah University. On social media @aidanjoyyce (Instagram).

**DAVID TOSHIRO CRANE** (Marvin) is a New York-based actor, director, and teacher originally from Berkeley, California. His regional credits include the Los Angeles revival of *Reefer Madness* at The Whitley Theatre; *Emma* at Kansas City Repertory Theatre; *The Prince of Egypt*, *Miss Bennet: Christmas at Pemberley*, and *Tuck Everlasting* at TheatreWorks Silicon Valley; *Guys and Dolls* at San Francisco Playhouse; *The Glass Menagerie* at Sacramento Theatre Company; *Vietgone* and *Miss Bennet: Christmas at Pemberley* at Capital Stage; *Noises Off* at Hillbarn Theatre; *110 in the Shade* at Actors Co-op Theatre Company; *Indoor*

*Person* at Normal Ave; and Dave Malloy's *Don't Stop Me* and *Next to Normal* at Korsa Musical Theater. David's on-camera work includes numerous *BuzzFeed* sketches viewed by millions worldwide. He is a graduate of UCLA's School of Theatre, Film and Television. On social media @craviddane (Instagram). [davidtcrane.com](http://davidtcrane.com).

**AMELIA AGUILAR** (Velma) is a performer and music director whose performance credits include *Superstar: A Concert*, *Rent*, *Into the Woods*, and *Seussical* at Texas State University. Her musical director credits include *Superstar: A Concert* and *Sister Act* at Texas State University. Her television and film credits include background vocals for the Josh Groban Holiday Special and the Grammy Awards 2020. Aguilar holds a BFA in Musical Theatre from Texas State University and received additional training at Shakespeare's Globe Theatre. On social media @ameliaaguilarr (Instagram).

# PRODUCTION

**BEN MOSS** (Music Director, he/him) is an award-winning music director, performer, songwriter, and orchestrator. New York credits include *Oratorio for Living Things* at Ars Nova and Signature Theatre Company (NYC) (Obie Award and Lucille Lortel Award), *The Hello Girls* at Prospect Theater and Syracuse Stage, Heather Christian's *PRIME: A Practical Breviary* released by Playwright's Horizons "Soundstage," *Arlington* at the Vineyard Theatre, and Alexandra Silber's *After Anatevka* at Audible's Minetta Lane Theatre. DC credits include *A Wrinkle in Time* at Arena Stage, *Penelope* at Signature Theatre (Helen Hayes nomination), and appearances at The Kennedy Center. Regional credits include *Salty Brine's Bigmouth Strikes Again* at Soho Theatre, UK, and *Azul* at the Eugene O'Neill Theater Center. He is the music director of the *Broadway Sings* concert series. He is a graduate of Harvard University. [benkmoss.com](http://benkmoss.com).

**DEBRA BOOTH** (Set Designer) has a long history with Studio, where she has designed

*Fun Home*; *People, Places & Things*; *Pass Over*; *Translations*; *The Wolves*; *The Father*; *The Hard Problem*; *Privates on Parade*; *The Apple Family Cycle*; *Jumpers for Goalposts*; *Cock*; *Bachelorette*; and others. Regional work includes *Sooner/Later* and *Blood Knot* at Mosaic Theater Company, *Richard III* (Helen Hayes nomination), *The Lover* and *The Collection* at the Shakespeare Theatre Company, *Marisol* at Hartford Stage and The Public Theater, the New York premiere of *Angels in America* at The Juilliard School, *Broken Glass* at Philadelphia Theatre Company (Barrymore Award nomination), and *A Moon for the Misbegotten* at Yale Repertory Theatre. Debra received the DC Commission on the Arts and Humanities Artist Fellowship and a NEA design grant. She is a graduate of the Yale School of Drama.

**MOYENDA KULEMEKA** (Costume Designer) has worked at Studio Theatre previously on *The Scenarios*, *The Colored Museum*, *Good Bones*, and *John Proctor is the Villain*.



Regionally, she has worked on *Where the Mountain Meets the Sea*, and *Birthday Candles* at Cincinnati Playhouse; *Akeelah and the Bee*, *Lady Day at Emerson's Bar and Grill*, and *Tiny Beautiful Things* at Baltimore Center Stage; *Selling Kabul*, *Daphne's Dive*, and *Detroit '67* at Signature Theatre; *Jump* at Everyman Theatre; *Radio Golf* at Round House Theatre; and *Nancy, Confederates, Bars and Measures*, and *In His Hands* at Mosaic Theater Company, among others. Moyenda received her B.A. at the University of Maryland and is a member of United Scenic Artists, Local 829, IATSE.

**MARY LOUISE GEIGER** (Lighting Designer) is a lighting designer for theatre, dance, and opera. At Studio, she designed *At the Wedding*, *Chimerica*, *Invisible Man* (Helen Hayes award), and *Time Stands Still*. On Broadway, she designed *The Constant Wife* for Roundabout Theatre Company. Her upcoming Off Broadway credits include *Midwest Porn* for the Tent Theatre Company and *Zack* for the Mint Theatre Company. Regionally, her work includes *Rope* and *All My Sons* for Hartford Stage, *Last Night and the Night Before* at Steppenwolf Theatre Company, and *Lady Day at Emerson's Bar and Grill* for Syracuse Stage. Recent dance work includes Christopher Wheeldon's ballet *From You Within Me* for New York City Ballet and a revival of *The Sleeping Beauty* for the Royal Danish Ballet. She trained at the Yale School of Drama and teaches at NYU. [mlgeiger.com](http://mlgeiger.com).

**NICK KOURTIDES** (Sound Designer) designs for musical theatre and creates sound environments for devised ensemble works. He is the global sound designer for *Magic Mike Live*. Previously at Studio he designed and composed *If I Forget* and designed *The Object Lesson*. Off Broadway credits include *Oratorio for Living Things* at Ars Nova and Signature Theatre Company, *Macbeth in Stride* at BAM, *Three Houses* at Signature Theatre Company, *The Keep Going Songs* at LCT3, *Travels and The Lucky One* at Ars Nova, *Terce: A Practical Breviary* at the Prototype Festival, *Black Light* at Greenwich House, *The Object Lesson* at NYTW and BAM, *Elephant Room* at St. Ann's Warehouse, *Carson McCullers Talks About Love* at Rattlestick Theater, and *Jomama*

*Jones: Radiate* at Soho Rep. He has designed at dozens regional theatres nationally. Nick has taught Sound Design for Live Performance at Drexel University and Swarthmore College. He has received Obie, Lucille Lortel, Bessie, and Barrymore awards.

**MICHELLE MARIE LYNCH** (Dramaturg) is a dramaturg, playwright, producer, and director. Her dramaturgy credits include *Night Garden* at The Kennedy Center, *tempered* at 4615 Theatre, *Q-Fest* and *Jingle in July* at Adventure Theatre MTC, and *North Wind* at Rapid Lemon Productions. Her commissioned plays include *From Cinders to Ella* and *Willow's Bend* at Adventure Theatre MTC. In recent years, Michelle has worked as the Artistic and Literary Associate for Folger Theatre, as a script reader for Studio Theatre, and as a Dramaturgy Career Mentor for Theatre Washington. In 2026, Michelle will be the Assistant Director for *Much Ado About Nothing* at Faction of Fools. On social media @michellemarieci. [michellemarielynych.squarespace.com](http://michellemarielynych.squarespace.com).

**ASHLEIGH KING** (Movement Coordinator/Choreographer) is a DC-born actor, director, choreographer, and four-time Helen Hayes award winner. She returns to Studio Theatre after previous work on *Fun Home* and *Problems Between Sisters*. Her DC-area credits include *Which Way to the Stage*, *Ragtime*, *Hair*, and *Hedwig and the Angry Inch* at Signature Theatre; *Merry Wives* at Shakespeare Theatre Company; *Little Shop of Horrors* at Ford's Theatre; *The Sensational Sea Mink-ettes*, *Teenage Dick*, and *Fairview* at Woolly Mammoth Theatre Company; *Beautiful: The Carole King Musical* at Olney Theatre Center; *Legally Blonde* and *Seussical* at The Keegan Theatre; *Junie B. Jones, the Musical* and *She Persisted* at Adventure Theatre MTC; and *A Year with Frog and Toad* at Imagination Stage. Her regional credits include *Waitress*, *'Bov Water*, *Spring Awakening*, and *Spamalot* at Northern Stage; *Donna: The Donna Summer Musical* at Red Mountain Theatre; and *Mamma Mia!* at Virginia Repertory Theatre.

**JOHN KEITH HALL** (Production Stage Manager) Previous Studio credits include *Wipeout*; *Downstate*; *Summer, 1976*; *Exception to the Rule*; *The Colored Museum*; *At the Wedding*; *Espejos*; *Clean*; *Fun Home*; *Bad Jews*; *Choir Boy*; *Water by the Spoonful*; *Tribes*; *Torch Song Trilogy*; *4000 Miles*; *In the Red and Brown Water*; *The History Boys*; and *The Road to Mecca*. Other DC area credits include productions at Theater J, Woolly Mammoth Theatre Company, Olney Theatre Center, Signature Theatre, and The Kennedy Center. His regional credits include more than 40 productions as Resident Stage Manager at the Barter Theatre as well as Shadowlands Stage, Virginia Musical Theatre, and Contemporary American Theatre Festival.

**KATJA ZAROLINSKI, CSA** (Casting) is serving as the Studio Theatre NYC Casting Director for the 2025/2026 season. Katja is a New York-based casting director handling productions

for theater, film and television. Previous casting work includes Broadway, Off Broadway and regional productions at Alley Theatre, Arena Stage, Asolo Repertory Theatre, Baltimore Center Stage, Barrington Stage Company, Cape Playhouse, Chicago Shakespeare Theater, City Theatre Company, Contemporary American Theatre Festival, Crossroads Theatre Company, Everyman Theatre, George Street Playhouse, Goodspeed Musicals, Guthrie Theater, Irish Repertory Theatre, Kansas City Repertory Theatre, Merrimack Repertory Theatre, Mosaic Theatre Company, Olney Theatre Center, Oregon Shakespeare Festival, Pittsburgh CLO, PlayMakers Repertory Company, Pittsburgh Public Theater, The Repertory Theatre of St. Louis, Seattle Rep, Shakespeare & Company, Shakespeare Theatre Company, Signature Theatre (DC), South Coast Repertory, TheaterWorks Hartford, Virginia Stage Company, Virginia Theatre Festival, and many more.

---

# PRODUCTION STAFF

ASSISTANT DIRECTOR  
**NAYANNA SIMONE**

ASSOCIATE MUSIC DIRECTOR  
**MARIKA COUNTOURIS**

ASSISTANT STAGE MANAGER  
**LILA-ROSE ROBERTS**

ASSISTANT LIGHTING DESIGNER  
**PAUL CALLAHAN**

ASSOCIATE SOUND DESIGNER  
**DI CAREY**

PRODUCTION SOUND SUPERVISOR  
**DELANEY BRAY**

SCENIC CHARGE  
**MEG ZETTELL**

LIGHT BOARD OPERATOR  
**ERIN SANDERS**

SOUND BOARD OPERATOR  
**BRIAN JOHNKE**

AUTOMATION OPERATOR  
**TROY JOHNSON**

INTIMACY COORDINATOR  
**SIERRA YOUNG**

TAKEOVER ASSISTANT STAGE  
MANAGER  
**ILEANA BLUSTEIN**

PRODUCTION MENTAL  
HEALTH SUPPORT  
**SARA MINDEL, LICSW**

PROPERTIES SUPERVISOR  
**AMY KELLETT**

PROGRAM GRAPHIC DESIGNER  
**BILL GEENEN**

---

# SPECIAL THANKS

The production would like to thank the Contemporary American Theater Festival for their support.



## JOIN US FOR THE 2026 ANNUAL BENEFIT

A one-night-only concert  
performance featuring  
selections from

### **NATASHA, PIERRE & THE GREAT COMET OF 1812**

BY DAVE MALLOY

MONDAY, MARCH 23, 2026



GET TICKETS AND LEARN MORE AT  
[STUDIOTHEATRE.ORG/BENEFIT](https://studiotheatre.org/benefit)



# LEADERSHIP

DAVID MUSE  
ARTISTIC DIRECTOR

REBECCA ENDE LICHTENBERG  
EXECUTIVE DIRECTOR

## BOARD OF TRUSTEES

Rob Batarla  
**CHAIR**

Navroz Gandhi  
**TREASURER**

Belinda Elvan Nixon  
**SECRETARY**

Marc Albert

Rob Batarla

Susan Butler

Rick Donaldson

Dr. Mark Epstein

Linda Fienberg

Mark Foster

Navroz Gandhi

Yinuo Geng

Jinny Goldstein

Susan L. Gordon

John Guggenmos

Kathleen Kunzer

Rosenzweig

Sharon Lowe

Renee R. Matalon

Lori McFarling

Larry Naake

Belinda Nixon

Tuknekah Noble

Jamie Pate

Jennifer Randolph

Dusty Riddle

The Honorable Carol  
Schwartz

Teresa Schwartz

Luz Blancas Sevak

Barney Shapiro

Steve Skalet

Aimee Smart

Bobbi Terkowitz

Terry Theologides

Robert Tracy

Amy Weinberg

Melissa Wiley

### EX-OFFICIO

David Muse

Rebecca Ende Lichtenberg

### HONORARY TRUSTEES

The Honorable Ann Brown  
and Dr. Ted Poritz

Otho Eskin and  
Therese Keane

Sari Hornstein

Robert and Arlene Kogod

David and Joan Maxwell

Craig Pascal

### EMERITUS TRUSTEES

Jon Danforth

Jean Grier

Michael Higgins

Albert Lauber

Ginny McArthur

Gerald Rosberg

### FOUNDING ARTISTIC DIRECTOR

Joy Zinoman

## FELLOWS-IN-RESIDENCE PROGRAM

The Studio Fellows-in-Residence program prepares future artists and administrators for a successful career in the arts through a rigorous, hands-on training experience over the course of a full theatrical season.

### PROGRAM SPONSORS

Susan and Dixon Butler

Linda Fienberg and Jeffrey Bauman

Sari Hornstein

Teresa and Dan Schwartz

Amy Weinberg and Norbert Hornstein

**ARTISTIC****JESS CHAYES**

Associate Artistic Director

**ADRIEN-ALICE HANSEL**

Literary Director

Commissioned Artists

**MARGOT BORDELON****STEVE BROADNAX III****SARAH DELAPPE****ERIKA DICKERSON-  
DESPENZA****MOLLY SMITH METZLER****KATE EASTWOOD NORRIS****AK PAYNE****TYNE RAFAELI****GEOFF SOBELE**

Readers Circle

**NORA GEFFEN****MICHELLE MARIE LYNCH****FRANCESCA SABEL****PRODUCTION****JEFFERY MARTIN**

Director of Production

**CLARICE BERARDINELLI**

Rentals &amp; Events Manager

**ANAHITA SEPEHRI**Assistant Production  
Manager**BRANDEE MATHIES**

Costume Shop Manager

**CHRISTION JONES**Lighting & Sound  
Supervisor**RHIANNON SANDERS**

Technical Director

**SARAH MCCARTHY**

Master Carpenter

**DEVELOPMENT****BIANCA BECKHAM**

Director of Development

**HANNAH HESSEL RATNER**Associate Director of  
Development**DARCY FOWLER**Development Operations  
Manager**EMMA CUMMINGS**Donor Relations and Special  
Events Coordinator**GENERAL  
MANAGEMENT****KATHRYN HUEY**Director of Finance &  
Administration**AMANDA ACKER**

Business Director

**CORY MCCONVILLE**

Operations Manager

**EVE PARENT**Management &  
HR Coordinator**WILL STUTZMAN**

Operations Assistant

**SYDNE LYONS**

Business Assistant

**MARKETING AND  
COMMUNICATIONS****HILARY JUDIS**Director of Marketing and  
Communications**REBECCA FISCHLER**Associate Director of Marketing  
and Communications**SHANE OLIVER**

Audience Services Director

**JEFF KLEIN**

Audience Services Manager

**GABBY WOLFE**

Marketing Insights Manager

**AVI LITTKY**

Digital Marketing Associate

Lead Box Office Associates

**MARTHA HAHN****SYDNE LYONS****CHARLOTTE NEWTON**

Box Office Associates

**MAYA BROWN****DREW SHARPE**

Lead House Managers

**ZORA ALLISON****BRINDEN BANKS****MARK BERRY****DANIEL BINDER****JAIDA GILLESPIE****MARCEL HARTLEY****BRIAN KLOSE****STEPHANIE LANDRY****KAIYA LYONS****CHRISTIAN MORENO****ALEJANDRO OMS****GAELYN SMITH****ELIZA SNIPES****ASH TROTTER**

House Managers

**RUTH ATTA****SAVANNAH BLACKWELL****ARYSSA DAMRON****SPIKE DICKERSON****ALEJANDRO OMS****BOB REEG****ERIN SHORT****MCKENNA CANTY****2025-26 FELLOWS****PHILIP CULLEN**PRODUCTION & EVENTS  
MANAGEMENT FELLOW**JOE FOX**TECHNICAL DIRECTION  
FELLOW**SARAH JOHNSON**

MARKETING FELLOW

**MIA MARTINEZ**SOUND & PROJECTION  
FELLOW**EVALYN PEACEY**

ELECTRICS FELLOW

**MAEVE REILLY**COMPANY MANAGEMENT  
FELLOW**LILA-ROSE ROBERTS**STAGE MANAGEMENT  
FELLOW**NAYANNA SIMONE**

DIRECTING FELLOW

**ELLA TALERICO**ARTISTIC PRODUCING  
FELLOW**CAMERON ZAKRESKI**

DEVELOPMENT FELLOW

# THANK YOU TO OUR SUPPORTERS

## ARTISTIC DIRECTOR'S CIRCLE

Aron Family Foundation  
Rob Batarla  
Beech Street Foundation  
Nan Beckley  
Susan and Dixon Butler  
Trudy H. Clark  
Sheryl and Rick Donaldson  
Karen Doyne  
Dr. Mark Epstein and  
Amoretta Hoeber  
Hope and Mark Foster  
The Galena-Yorktown Foundation  
Wendy and William Garner  
Jinny Goldstein  
Susan L. Gordon  
John Guggenmos and  
Timur Loynab  
John and Meg Hauge  
Sari Hornstein  
Rick Kasten  
Kathleen Kunzer and  
Paul Rosenzweig  
Lynn Bonde and  
Richard Lehmann  
Herb and Dianne Lerner  
Jim and Sharon Lowe  
Marilyn Marcossan  
Paul Massey and Josh O'Harra  
Renee Matalon and  
Stephen Marcus  
Joan and David Maxwell  
Lou Mazawey  
Larry and Joan Naake  
Belinda and Gregory Nixon  
Craig Pascal  
Jamie Pate  
Judy Pomeranz  
Irene Roth and Vicken Poochikian  
Samantha Sault  
Barney and Susan Shapiro  
Steve and Linda Skalet  
Ed and Andy Smith  
Bobbi and Ralph Terkowitz  
Terry Theologides and  
Deb Rodriguez  
Norbert Hornstein and  
Amy Weinberg

## OVATION CIRCLE

Marc Albert and Stephen Tschida  
Dr. Stewart Aledort and  
Dr. Sheila Rogovin  
Jeremias Alvarez  
Dean Amel and Terry Savela  
Rob Batarla  
Peter Bieger and Demian Gaiteri  
The Honorable Ann Brown  
John Chester and Betty Shepard  
Louis and Bonnie Cohen  
E&B Family Trust  
Anne and Marc Feinberg  
Gerard Fiala  
Navroz and Perinaaz Gandhi  
Yinuo Geng  
George Wasserman Family  
Foundation  
Alyse Graham  
In memory of Herb and  
Nancy Milstein  
Frona Hall  
Larry Haller and Sherry Marts  
Kirby Heller and Steve Dennett  
Margaret Hennessey  
Virginia A. McArthur and  
E.C. Michael Higgins  
Richard and Pamela Hinds  
Linda Lurie Hirsch  
John Horman  
Lynne Horning  
Hal Jones and  
Anne-Lise Auclair-Jones  
Leonade D. Jones  
John Keator and Virginia Sullivan  
Kay Kendall and Jack Davies  
Helen and David Kenney  
Kyle Kerr  
Arlene and Martin Klepper  
Judy and Peter Blum Kovler  
Foundation  
Barry Kropf  
Vinca and David LaFleur  
Stephen A. Saltzburg and Susan Lee  
The Lewis Butler Foundation  
Eve A. Lilley  
Karen and Daniel Mayers  
Morningstar Philanthropic Fund  
Morrissette Family Foundation  
Zell Murphy and Mark Wasson  
Carl and Undine Nash  
Tukneka Noble  
Melanie and Larry Nussdorf  
Daniel Pattenden  
Merrie Pearl and Dylan Slotemaker

Carl and Margaret Pfeiffer  
Daniel Pink  
Michael and Penelope Pollard  
Ane Powers  
Lutz Alexander Prager  
Timothy Price  
Peter S. Reichertz  
Dusty Riddle and Daniel Aune  
Jennifer Robb  
Lucinda Romberg  
Sara Rosenbaum and Dan Hawkins  
Steven M. Rosenberg and  
Stewart C. Low III  
Dr. April Rubin and Mr. Bruce Ray  
Sandra and Gilbert Oken Foundation  
Sandra and Albert Schlachtmeyer  
The Honorable Carol Schwartz  
Amit Sevak and Luz Blancas Sevak  
Linda and Stanley Sher  
David and Peggy Shiffrin  
Aimee Smart and Shefa Gordon  
Spoor Family Fund  
Dave Steadman and  
Daphne Kiplinger  
Alan Asay and Mary Sturtevant  
Robert Tracy and Martha Gross  
Mark Tushnet and  
Elizabeth Alexander  
Kazuko and Yoshine Uchimura  
Steve Verna  
Eric R. and Laura M. Wagner  
Anne and Ernest Wallwork  
Gregory A. Williams  
Zack Wisniewski and Chris Hanes  
Beverly and Christopher With  
Mary and Michael Young  
Judy and Leo Zickler

## OPEN CIRCLE

Linda Adams  
Marcia and Larry Arem  
Scott Barash  
Liz Barratt-Brown  
R. Joseph Barton  
Scott Douglas Bellard  
Allan and Michele Berman  
Jessica Berman and  
Michael Fernandez  
Loren and Peter Brandman  
Sue and Joe Bredekamp  
Michael Burke and Carl Smith  
Keith and Kristen Burnham  
Blain and Peg Butner  
E S Carton  
Jessica Case  
Dr. Morris J. Chalick

Mady Chalk  
 Cecilia Chandler  
 Nancy Chasen and Don Spero  
 Brian Collins  
 Will and Carol Cooke  
 David Cooper and Stephen Nash  
 William Corin  
 Drew Courtney and Nick Berning  
 Nancy Crisman  
 Michael Crosswell  
 Johanna Cummings  
 Richard and Janet Dante  
 Laurie Davis and Joseph Sellers  
 Nancy Deck & Michael Gross  
 John Driscoll  
 Ellen and Fred Ende  
 Michael Klein and Joan Fabry  
 Wayne Farmer  
 Whitney Farmer  
 The Manny and Ruthy Cohen Foundation  
 Carole Feld and David C. Levy  
 James A. Feldman and Natalie Wexler  
 Michael S. Fernandez  
 Leo S. Fisher & Susan J. Duncan Gift Fund  
 Trudy Fleisher  
 Sarah Hope Franks and Michael O. Moore  
 Gargee Ghosh  
 Amy C. Gilbert and Steven Newpol  
 Janice Goldblum  
 Joyce and Richard Gordon  
 Sally W Gresham  
 David and Jean Heilman Grier  
 John G. Guffey  
 Gail Gulliksen  
 Jack Hairston Jr.  
 Bonnie Hammerschlag  
 William and Wendell Hausdorff  
 James Heegeman  
 Sonya Hepinstall  
 Steve and Barbara Hirsch  
 Melane K Hoffmann  
 Marvene Horwitz

John and Gail Howell  
 Michel Jichlinski  
 Jason Johnston  
 Thomas Joseph  
 Andrew Joskow and Lisa Sockett  
 Terrance Kalahurka  
 Jeremy and Marnie Kaplan  
 Robert L. Kimmins  
 Jan Klein  
 Leslie Kogod  
 Michael W. Kolakowski  
 Patricia and John Koskinen  
 Bette and William Kramer  
 Diane Kresh  
 Thomas F. Lahr  
 Catherine Landry and Henry Brothers  
 Carrie Langsam  
 Robert Lanman and Debra Bergoffen  
 Chad Lash & Caryn Wagner  
 James Leonard  
 Janet Lewis  
 Romana Li and Bruce Bartels  
 Lifland-Radmer Fund  
 Douglas Lingenfelter  
 Shawn C. Helm and J. Thomas Marchitto  
 Dan and Susan Mareck  
 Martha Washington Straus-Harry H. Straus Foundation  
 Lynne Martin  
 Dayna Bowen Matthew  
 Anne Mayerson  
 Bruce and Mara Mayor  
 Anna McGowan  
 David McKinney  
 Carla and Mark Meister  
 Eddie Adkins & Jeff Mendell  
 The Honorable Phil Mendelson  
 Jeffrey Menick  
 Lisa Miller  
 Richard and Ellen Miller  
 Gary Mintz  
 Jane Molloy  
 The Mufson Family Foundation  
 Lou and Sherry Nevins  
 Martha Newman  
 Ray Olson  
 Jeanie Osburn

Linda and Peter Parshall  
 Stan Peabody  
 Evelyn Sandground & Bill Perkins  
 Charles Pfleeger and Shari Lawrence Pfleeger  
 Teresa Plotkin  
 Michael and Deborah Poliner  
 Murray Pollack and Joyce Campbell  
 Roger Reeves and Ruth Lammert-Reeves  
 Mervin Richard  
 Julie F. Rios  
 The Henry and Susan Rose Family Fund  
 Lynn Rothberg  
 Linda and William Rule  
 Frank Sammartino and Ellen Starbird  
 Christina Samson  
 Linda B. Schakel  
 Mady Schichor  
 Gail Schonfeld  
 Scott B. Schreiber and Evelyn Jaffe Schreiber  
 Linda Schwartz  
 Richard Tucker Scully and Lee A. Kimball  
 Jennifer Shea and Peter Bruns  
 Stuart Sirkin & Arlene Farber Sirkin  
 John and Ann Skeelee  
 Lauren Kogod and David Smiley  
 Cecile Srodes  
 David Stevens and Linda Wymbs  
 Jeanne Stovroff  
 Thomas Strikwerda and Donna Stienstra  
 Aileen and Jack Sullivan  
 Grant P. and Sharon R. Thompson  
 Dilge Timocin  
 Drs. Chuck & Cécile Toner  
 Margot Tripi  
 Robert O. Tyler  
 Tessa van der Willigen and Jonathan Walters  
 Scott Barash and Gayle Wald  
 Elisse Walter and Ronald Stern  
 Ronald Walters

Gloria Weissberg  
 Carolyn L. Wheeler  
 Elizabeth B. White  
 Jack and Sue Whitelaw  
 Annelie Wilde  
 Jeffrey Wilder  
 Melissa Wiley  
 Sandy and Jon Willen  
 Bruce Williams  
 Misti Mukherjee and Mike Williams  
 Linda Winslow  
 Robert I. Wise Jr  
 Paul Wolfson  
 Richard Wormsbecher  
 Allison and Doug Zabransky  
 Ed and Judy Zareski

## **CORPORATE, FOUNDATION, AND GOVERNMENT SUPPORT**

Anonymous  
 DC Commission on the Arts and Humanities  
 EventsDC  
 The Max and Victoria Dreyfus Foundation  
 Milton and Dorothy Sarnoff Raymond Foundation  
 The Morris and Gwendolyn Cafritz Foundation  
 Morgan Fund at Seattle Foundation  
 National Capital Arts and Cultural Affairs Program and the US Commission of Fine Arts  
 National Endowment for the Arts  
 The Nora Roberts Foundation  
 Paul M. Angell Family Foundation  
 Share Fund  
 Shapiro Family Foundation  
 Shubert Foundation

\*In memoriam

This list represents contributions of \$500 or more made to the annual fund as of December 19, 2025. Every effort has been made to ensure the accuracy of this listing. For more information, please contact the Development Department at 202.919.3712.



**UP NEXT**

**"STUNNING"**

—THE NEW YORK TIMES

# JONAH

---

BY **RACHEL BONDS**

DIRECTED BY **TAYLOR REYNOLDS**

Ana is on her own, a scholarship student at a boarding school, until she meets day-student Jonah. But what begins as an exploration of new and joyful desire shifts into more complex negotiations of intimacy and survival, covering decades in one woman's life. Critically lauded in New York, *Jonah* is a story of rage, resilience, and the radical possibilities of trust by Studio favorite Rachel Bonds.

**PERFORMANCES BEGIN MARCH 11, 2026**  
**TICKETS ON SALE NOW**