



# DOWNSTATE

STUDIO

# FRIENDS,



In recent months, many of the issues raised in this play played out just five miles from here, in the town of Brentwood, MD. That small community was rocked by controversy when its part-time mayor agreed to hire a man named Eric Reyes as a public maintenance laborer—to mow grass, sweep litter, and trim trees. The problem: Eric Reyes had participated in a violent gang rape when he was 17. The mayor believed that after 16 ½ years behind bars, he deserved a second chance. She spoke of forgiveness, understanding, and growth. To put it mildly, others in Brentwood disagreed strenuously.

Like David Auburn, who wrote *Summer, 1976*, Bruce Norris is a well-known American playwright being produced this season at Studio for the first time. Bruce is known as a provocateur. A flame-thrower. A rascal. With an instinctive aversion to orthodoxy, Bruce tends to put his finger on cultural sore spots and apply pressure.

In some respects, *Downstate* fits the Bruce Norris mold. But I think it also represents a significant departure for him. I contend that in the Bruce Norris catalog, this play is uniquely and especially humane. Its core question: can you, can our society, and can our system of justice consider extending compassion, empathy, or forgiveness to the most loathed among us?

Vengeance versus forgiveness. Mercy versus punishment. This debate has animated drama since its birth. In our current political and cultural moment, I find these concerns to be as resonant as they have ever been. These days, I'm especially grateful to work in the theatre, which is particularly good at complicating simplistic narratives and humanizing the easily dismissed.

Its content isn't the only thing that makes *Downstate* so notable. It's also a mature, well-built drama, with expertly delineated characters, sizzling dialogue, masterful tone shifts, and a wicked sense of humor that deliberately makes it difficult to find your moral footing.

An accomplished group of theatre artists have come together to produce this play, a mix of Studio veterans and debutants. We've had a remarkably good time, all things considered. I'm pleased that you're here to witness the fruits of our labor, and I hope that this is the kind of play that stays with you after you leave.

Yours,

David Muse  
Artistic Director

For a note from the dramaturg and more background information on *Downstate* please visit



[studiotheatre.org/  
downstate](http://studiotheatre.org/downstate)

# STUDIO THEATRE

**DAVID MUSE**  
ARTISTIC DIRECTOR

**REBECCA ENDE  
LICHTENBERG**  
EXECUTIVE DIRECTOR

## PRESENTS

# DOWNSTATE

BY  
**BRUCE NORRIS**

DIRECTED BY  
**DAVID MUSE**

*Downstate* is presented through special arrangement with TRW PLAYS, 1180 Avenue of the Americas, Suite 640, New York, NY 10036. [www.trwplays.com](http://www.trwplays.com)

Playwrights Horizons, Inc., New York City, produced the New York Premiere of *Downstate* in 2022

*Downstate* was co-commissioned and its World Premiere was presented by Steppenwolf Theatre Company (Anna Shapiro, Artistic Director; David Schmitz, Executive Producer) and The National Theatre, London (Rufus Norris, Artistic Director; Lisa Burger, Executive Director)

**SDC** The Director and/or Choreographer is a member of the Society of Stage Directors and Choreographers, Inc., an independent national labor union.



The scenic, costume, lighting and sound designers in LORT Theatres are represented by United Scenic Artists, Local USA829 of the IATSE.

SET DESIGNER  
**ALEXANDER WOODWARD**

COSTUME DESIGNER  
**DANIELLE PRESTON**

LIGHTING DESIGNER  
**STACEY DEROSIER**

SOUND DESIGNER  
**KENNY NEAL**

FIGHT CHOREOGRAPHER  
**ROBB HUNTER**

INTIMACY DIRECTOR  
**SIERRA YOUNG**

DRAMATURG  
**CHAD DEXTER KINSMAN**

PRODUCTION STAGE MANAGER  
**JOHN KEITH HALL\***

ASSISTANT STAGE MANAGER  
**DELANEY DUNSTER\***

TAKEOVER  
ASSISTANT STAGE MANAGER  
**KACIE PIMENTEL\***

DIRECTOR OF PRODUCTION  
**JEFFERY MARTIN**

TECHNICAL DIRECTOR  
**RHIANNON SANDERS**

CASTING  
**MCCORKLE CASTING**

UNDERWRITTEN BY  
**SUSAN AND DIXON BUTLER  
SARI HORNSTEIN**

# CAST



ANDY  
**TIM GETMAN\***



FELIX  
**RICHARD RUIZ  
HENRY\***



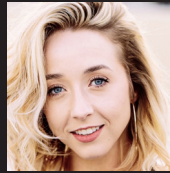
EM  
**EMILY KESTER\***



IVY  
**KELLI  
BLACKWELL\***



FRED  
**DAN DAILY\***



EFFIE  
**IRENE HAMILTON**



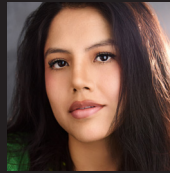
DEE  
**STEPHEN  
CONRAD MOORE\***



COP  
**NEIL DAWSON\***



GIO  
**JAYSEN WRIGHT\***



COP  
**LENNY MENDEZ**

## UNDERSTUDIES

ANDY, DEE, GIO  
**NEIL DAWSON\***

FELIX AND COPS  
**HANSEL RAMIREZ**

EM, IVY, EFFIE  
**LENNY MENDEZ**

FRED  
**NICK TORRES**

**SETTING:** A group home for sex offenders, downstate Illinois



\*Member of Actors' Equity Association,  
the Union of Professional Actors and  
Stage Managers in the United States.

The videotaping or audio and/or visual  
recording of this production is a violation  
of United States Copyright Law and an  
actionable federal offense.

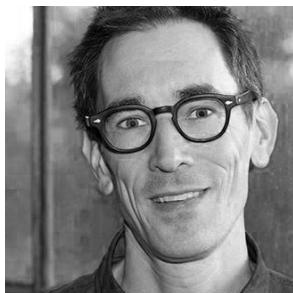
# PLAYWRIGHT



## BRUCE NORRIS

is the author of *Downstate*, which received the 2024 Obie Award for Playwriting. Other plays include *Clybourne Park*, which won the Pulitzer Prize for Drama (2011) and the Olivier Award and was nominated for an Evening Standard Theatre Award and three Tony Awards. He also wrote *The Low Road*, *The Qualms*, *Domesticated*, *A Parallelogram*, *The Unmentionables*, *The Pain and the Itch*, and *Purple Heart*.

# DIRECTOR



**DAVID MUSE** is in his fifteenth season as Artistic Director of Studio Theatre, where he has directed *Love, Love, Love*; *Fun Home*; *People, Places & Things*; *Cock* (the in-person and digital productions); *The Children*; *The Remains*; *The Effect*; *The Father*; *Constellations*; *Chimerica*; *Murder Ballad*; *Belleville*; *Tribes*; *The Real Thing*; *An Iliad*; *Dirt*; *Bachelorette*; *The Habit of Art*; *Venus in Fur*; *Circle Mirror Transformation*; *reasons to be pretty*; *Blackbird*; *Frozen*; and *The Intelligent Design of Jenny Chow*. As Studio's Artistic Director, he has produced 116 productions; established Studio R&D, its new work incubator; significantly increased artist compensation; created The Cabinet, an artist advisory board; and overseen Open Studio, a \$20M expansion and upgrade of Studio's four-theatre complex. Previously, he was Associate Artistic Director of the Shakespeare Theatre Company, where he has directed nine productions, including *Richard III*, *Henry V*, *Coriolanus*, and *King Charles III* (a co-production with American Conservatory Theater and Seattle Rep). Other directing projects include *Frankie and Johnny in the Clair de Lune* at Arena Stage, *The Bluest Eye* at Theatre Alliance, and Patrick Page's *Swansong* at the New York Summer Play Festival. He has helped to develop new work at numerous theatres, including New York Theatre Workshop, Geva Theatre Center, Arena Stage, New Dramatists, and The Kennedy Center. David has taught acting and directing at Georgetown, Yale, and the Shakespeare Theatre Company's Academy of Classical Acting. A nine-time Helen Hayes Award nominee for Outstanding Direction, he is a recipient of the DC Mayor's Arts Award for Outstanding Emerging Artist and the National Theatre Conference Emerging Artist Award. David is a graduate of Yale University and the Yale School of Drama.

2024-2025

# SEASON SPONSORS

SUSAN AND DIXON BUTLER  
SHERYL AND RICK DONALDSON  
DR. MARK EPSTEIN AND  
AMORETTA HOEBER  
JINNY AND MICHAEL GOLDSTEIN  
SARI HORNSTEIN  
ALBERT G. LAUBER AND  
CRAIG HOFFMAN  
PAUL MASSEY AND JOSH O'HARRA  
LOU MAZAWAY  
JOAN AND DAVID MAXWELL  
CRAIG PASCAL

BELINDA AND GREGORY NIXON  
KATY KUNZER ROSENZWEIG AND  
PAUL ROSENZWEIG  
TERESA AND DAN SCHWARTZ  
STEVE AND LINDA SKALET  
BOBBI AND RALPH TERKOWITZ  
TERRY THEOLOGIDES AND DEB  
RODRIGUEZ  
MARK TUSHNET AND  
ELIZABETH ALEXANDER  
AMY WEINBERG AND  
NORBERT HORNSTEIN



The cast of English. Photo by DJ Carey Photography

## DID YOU KNOW THAT STUDIO HELPS TRAIN THE NEXT GENERATION OF THEATRE PROFESSIONALS?

- In collaboration with the Theatre Lab School of Dramatic Arts, we provide training for early career DC professional theatre technicians from disadvantaged circumstances, in some cases later employing those students in our productions.
- Studio participates in Howard University's stage management program, in which the Howard drama department recommends students to cover small technical roles and then graduate to full crew and stage management positions.
- Studio's newly launched Fellows-in-Residence program is one of the nation's most robust, offering aspiring theatre professionals unparalleled experience and training, while providing full-employment including benefits and housing.

**TIM GETMAN** (Andy) returns to Studio following four seasons at the Oregon Shakespeare Festival where he appeared in *The Tempest*, *Romeo and Juliet*, *Much Ado About Nothing*, and *Jane Eyre*. At Studio, he has been seen in *The Real Thing*, *Water by the Spoonful*, and *Hand to God* (Helen Hayes nomination Best Ensemble). Over 25 years, Tim worked with most professional theatres in the DC area and has been a company member at Woolly Mammoth Theatre Company and Everyman Theatre. Some favorites at Woolly were *The Unmentionables* (also by Bruce Norris), *Gruesome Playground Injuries*, *Detroit*, *The Arsonists*, and *Describe the Night*. His work at Everyman includes *God of Carnage*, *Outside Mullingar*, and *Dancing at Lughnasa*. Tim has a B.A. from Macalester College and Trinity College Dublin and a Masters in Natural Resources from Virginia Tech.

**EMILY KESTER** (Em) is an actor based in Washington, DC. Her previous Studio credits include *At the Wedding*, *The Hard Problem*, and *Edgar & Annabel*. Her regional theatre credits include *The Trip to Bountiful*, *Silent Sky*, and *A Christmas Carol* at Ford's Theatre; *Maz and Bricks* at Solas Nua; *Detroit '67* at Signature Theatre; *Labor of Love* at Olney Theatre Center; *The Last Schwartz* at Theater J; *Noises Off* and *The Revolutionists* at Everyman Theatre; *Equus* at Constellation Theatre Company; *Miss Nelson is Missing!*, *The BFG*, and *The Little Mermaid* at Imagination Stage; and *Eurydice* at Next-Stop Theatre Company. She is a graduate of the University of North Carolina at Greensboro and has a BFA in Acting. On social media at @emkester (Instagram).

**DAN DAILY's** (Fred) Broadway credits include Steppenwolf Theatre Company's production of *The Minutes*, and *The Tenth Man* at Lincoln Center Theater. His Off Broadway credits include *The Cake* at Manhattan Theatre Club, *Sin: A Cardinal Deposed* at The New Group, *Days to Come* at Mint Theater Company, and *The Dining Room* at the Keen Company (Drama Desk Award). Dan was a company member of The Pearl Theatre for 18 seasons and over 50 productions. Film credits include *The Kitchen*, *Duplicity*, *Seabiscuit*, *Blood and Wine*, *Daylight*, and *Things Seen and Heard*. TV credits include *Law & Order* (NBC), *Boardwalk Empire* (HBO), *House Of Cards* (Netflix), and *City On A Hill* (Showtime).

He has a B.A. from the University of Notre Dame and an MFA from the University of Washington, Professional Actor Training Program, Robert L. Hobbs, director.

**STEPHEN CONRAD MOORE** (Dee) is a Kansas City native and longtime denizen of NYC. Some theatre credits include *Uncle Vanya* at Lincoln Center Theater on Broadway and August Wilson's one-man show *How I Learned What I Learned* at The Geva Theatre. Stephen has appeared on numerous other theatrical stages in New York City and across the country, including The Vineyard Theatre, The Guthrie Theatre, The McCarter Theatre Center, American Theatre Company, Philadelphia Theatre Company, Shakespeare Theatre Company, Yale Repertory Theatre. Selected television credits include *Empire*, *The Path*, *The Good Fight*, *Better Call Saul*, and five seasons of *The Bold Type*. He is a graduate of the University of Missouri – Kansas City and The Yale School of Drama.

**JAYSEN WRIGHT** (Gio) returns to Studio after performances in *Choir Boy*, *Wig Out!*, *Richard O'Brien's The Rocky Horror Show*, and *I Hate it Here*. He is a company member at the Oregon Shakespeare Festival, appearing recently in *Macbeth*, *Born with Teeth*, *Twelfth Night*, and *The Three Musketeers*. Other credits include *Smart People* and *Jubilee* at Arena Stage, *Beauty and the Beast* at The 5<sup>th</sup> Avenue Theatre, *The Royale* co-production at Olney Theatre Center and 1<sup>st</sup> Stage, *The Till Trilogy* at Mosaic Theater Company, *The Importance of Being Earnest* at Everyman Theatre, *Take Me Out* at 1<sup>st</sup> Stage, *Actually* at Theater J, *Macbeth* at the Folger Theatre, and *The Wiz* at Ford's Theatre. He holds an MFA from Indiana University. [jaysenwright.com](http://jaysenwright.com) On social media at @thejayceface (Instagram).

**RICHARD RUIZ HENRY** (Felix) is making his Studio Theatre debut. His theatre credits include *Two Gentlemen of Verona* at The Public Theater, *Drift* at New World Stages, *The Streets of New York* at the Irish Repertory Theatre, and *Fiorello!* at New York City Center. Regional theater credits include *Two Gentlemen of Verona* at The Old Globe, *Cyrano* and *The Winter's Tale* at Folger Theatre, *Twelfth Night* at Pig Iron Theatre Company, and *The Hunchback of Notre Dame* at La Jolla Playhouse and Paper Mill Playhouse (as well as the cast recording).

National tours include *Urinetown*, *Sweet Charity*, *Man of La Mancha* and *Jesus Christ Superstar*. Richard's television work includes *Search Party* and *The Other Two* (HBOMax), *Younger* (Paramount+), *Bupkis* (Peacock), *The Marvelous Mrs. Maisel* (Amazon Prime), *Girls5Eva* (Netflix), and *Law & Order* (NBC).

**KELLI BLACKWELL** (Ivy) is an actor, teaching artist, and self-published children's author.

Her theatre credits include *The Colored Museum* and *Fat Ham* at Studio Theatre; *Shout Sister Shout!* at Ford's Theatre; *Beauty and the Beast* and *A.D. 16* at Olney Theatre Center; *Nine Night* at Round House Theatre; *Crowns* and *Thunder Knocking on the Door* at Creative Cauldron; *A Streetcar Named Desire* and *By the Way, Meet Vera Stark* at Everyman Theatre; *The Wiz*, *Smokey Joe's Cafe*, and *Next to Normal* at ArtsCentric; *Ain't Misbehavin'*, *Dreamgirls*, and *Grease* at Toby's Dinner Theatre; *Hairspray* at Sharon Playhouse; *Once on This Island* at Cortland Repertory Theatre; and the national tours of *Chicago* and *Amazing Grace*. Kelli serves on the senior leadership team and as the Director of Arts Education with Baltimore-based theatre company, ArtsCentric. [kellimblackwell.com](http://kellimblackwell.com).

**IRENE HAMILTON** (Effie) is a DC-based actor making her Studio debut. Her local credits include *Merrily We Roll Along* and *Webster's Bitch* at The Keegan Theatre; *Agreste (Drylands)* at Spooky Action Theatre; *Macbeth* at Taffety Punk Theatre Company; *The Very Hungry Caterpillar Show/La Oruga Muy Hambrienta Espectáculo* at Imagination Stage; *The Lion, the Witch, and the Wardrobe* (Helen Hayes Nomination) and *Sing Down the Moon* at Adventure Theatre MTC; and *Angel Number Nine* at Rorschach Theatre. She is a company member at Arts on the Horizon and Synetic Theater. On social media at @irene\_h44 (Instagram).

**NEIL DAWSON** (Cop, u/s Andy, Dee, Gio) is an New York-based actor originally from the Bronx, NY. Theatre credits include *Westphalia* at Luna Stage, *The Blacks* at Classic Stage Company, *Ain't Supposed to Die...* at The Classical Theatre of Harlem, *The Mountaintop*

at Weston Playhouse, *Waiting for Giovanni* at The Flea Theater, *Fires in the Mirror* at Cincinnati Playhouse in the Park, *Stick Fly* at Majestic Theater, *Intimate Apparel* at Wellfleet Harbor Actors Theater, *365 Days/365 Plays* at The Public Theater, and *Black Man Rising* (AUDELCO Award Winner) at National Black Theatre Festival. TV credits include *FBI*, *Godfather of Harlem*, *New Amsterdam*, *Law & Order*, and *The Today Show*, as well as numerous national commercials, voice-overs and industrials. He holds an MFA from the University of Washington Professional Actor Training Program.

**LENNY MENDEZ** (Cop; u/s Em, Ivy, Effie) is a Latina artist and is thrilled to be back at Studio Theatre, where she understudied *Espejos: Clean*. Other DC-area theatre credits include *Prom Night*, *Jardín Salvaje*, and *Picasso* at GALA Hispanic Theatre; *Laughs in Spanish* at 1<sup>st</sup> Stage; and *Chicks in Heaven*, *Ichabod: The Legend of Sleepy Hollow*, *Audrey: The New Musical*, *Madeline's Christmas*, *Monarch: A Mexican-American Musical*, *The Christmas Angel*, *The Snow Queen*, *Pinocchio*, *The Princess and the Pea*, and *Alice in Wonderland* at Creative Cauldron. She has also appeared at The Kennedy Center, Mosaic Theater Company, Workhouse Arts Center, and The Alden Theatre. She received her BFA in Theatre (Acting and Directing) from the University of George Mason and is a Circle in the Square Theatre School alumna. On social media @lennyyy\_mendez (Instagram).



# PRODUCTION

## **ALEXANDER WOODWARD** (Set Designer)

Alexander Woodward is a New York based designer, organizer, and artist focused in scenic and costume design for live performance. Credits include *White Noise* and *Love, Love, Love* at Studio Theatre, *The Sound Inside* on Broadway, and the ballet *Their Eyes Were Watching God* at Collage Dance Collective. Alexander is the Area Head of the BFA & MFA Design and Technical Theatre program at the University of Connecticut, and serves on the faculty of the David Geffen School of Drama at Yale University. As a designer and educator, Alexander is an avid proponent for advancing arts advocacy. In recent years, Alexander has served on the executive board for Wingspace, a non-profit organization that promotes conversation on design, our community, and furthers activism within the industry. MFA Yale, USA 829. alexanderwoodward.com on social media @alexanderwoodwarddesign (Instagram).

## **DANIELLE PRESTON** (Costume Designer)

is a costume designer based in Washington, DC. Studio Theatre credits include *Fat Ham*, *Clyde's*, and *P.Y.G. or the Mis-Education of Dorian Belle*. Recent regional credits include *Blues for an Alabama Sky* at Barrington Stage Company, *The Sensational Sea Mink-ettes* at Woolly Mammoth Theatre Company, *Passing Strange* and *Penelope* at Signature Theatre, *A Nice Indian Boy* at Olney Theatre Center, *Locomotion* at Children's Theatre Company, *School Girls; or, The African Mean Girls Play* and *The REALNESS* at the Hangar Theatre, and *Quamino's Map* at Chicago Opera Theater. Danielle received the 2022 OPERA America Tobin Director-Designer Prize, the William R. Kenan Jr. Fellowship in Costume Design with The Kennedy Center, and the A.J. Fletcher Opera Institute Fellowship in Costume Design. She holds an MFA in Costume Design from the University of North Carolina School of the Arts. She is a proud member of United Scenic Artists Local 829. [daniellepreston.com](http://daniellepreston.com) On social media @danielleprestondesign (Instagram).

## **STACEY DEROSIER** (Lighting Designer)

previous credits include *La Cage Aux Folles* at Pasadena Playhouse, *Teeth* at New World Stages and Playwrights Horizons, *The Counter* and *The Refuge Plays* at Roundabout

Theatre Company, *The Welkin* at Atlantic Theater Company, *The Animal Kingdom* at the Connelly Theater Upstairs, *Daphne* at Lincoln Center Theater, *All the Devils Are Here* at DR2 Theatre, *The Half God of Rainfall* and *How to Defend Yourself* at New York Theatre Workshop, *Uncle Vanya* at OHenry Productions, *On Set with Theda Bara* at the Exponential Festival, *Where the Mountain Meets the Sea* at the Manhattan Theatre Club, *This Beautiful Future* at Cherry Lane Theatre, *Wedding Band* at Theatre for a New Audience, *sandblasted* at Vineyard Theatre/Women's Project Theater, and *Lewiston/Clarkston* at Rattlestick Theater. She is a 2018 Lilly Award Daryl Roth Prize recipient.

## **KENNY NEAL** (Sound Designer)

is a Helen Hayes Award-winning sound designer and composer. Credits include *English*, *Straight White Men*, *Jumpers for Goalposts*, and *Choir Boy* at Studio Theatre; *Sojourners* and *The Seafarer* at Round House Theatre; *The Moors* at Faction of Fools; *She A Gem* and *Digging Up Dessa* at The Kennedy Center; *Job*, *The Upstairs Department*, *Daphne's Dive*, *Heisenberg*, *John*, and *The Gulf* at Signature Theatre; *A Nice Indian Boy*, *Dance Nation*, *The Royale*, and *Oil* at Olney Theatre Center; *The Last Match*, *Airness*, *columbinus*, *Jesus Hopped the 'A' Train*, *Well*, *Floyd Collins*, *Old Wicked Songs*, and *Bat Boy* at 1<sup>st</sup> Stage; *English* at Barrington Stage Company; and *Becoming Dr. Ruth* at Theater J, Cleveland Play House, Village Theatre, and Maltz Jupiter Theatre.

## **ROBB HUNTER** (Fight Choreographer)

has directed violence for more than 25 Studio productions including *White Noise*, *Vietgone*, *The Effect*, *Hand to God*, *reasons to be pretty*, *Invisible Man*, *Superior Donuts*, *American Buffalo*, *Red Speedo* (Helen Hayes [HH] nomination), and *The Walworth Farce* (HH nomination). He also directs movement/violence for Shakespeare Theatre Company, including for *King Lear*, *Richard III* (HH nomination), *A Comedy of Errors* and others; as well as Arena Stage, Folger Theatre, Woolly Mammoth Theatre Company (HH award for *Hir* and nomination for *An Octoroon*), Signature Theatre (DC), Ford's Theatre, and others. He is a member of SDC, AEA, SAG/AFTRA, and one of only 21 Fight Masters recognized by the

# PRODUCTION

Society of American Fight Directors. He is the combat instructor at the Shakespeare Theatre Company Academy, Fight Choreographer in Residence at American University, and teaching artist for The Studio Theatre Acting Conservatory. [Robbhunter.org](http://Robbhunter.org) On social media @DCFightDirector (Instagram).

**SIERRA YOUNG** (Intimacy Director; she/her) is a multi-hyphenate artist in the DC/Baltimore area. Sierra is an active member of the Society of American Fight Directors, Intimacy Directors & Coordinators, SDC, and serves as the resident fight and intimacy director for Mosaic Theater Company. Recent Studio credits include *Exception to the Rule* and *The Colored Museum*. Recent DC choreography credits include *Jaja's African Hair Braiding* and *POTUS* at Arena Stage; *Little Shop of Horrors* at Ford's Theatre; *Spring Awakening* (HH nominated) at Monumental Theatre Company; *King Lear* (HH nominated) at Shakespeare Theatre Company; and *Prayer for the French Republic* at Theater J. Upcoming projects include *Hand to God* at Keegan Theatre, *Paradise Blue* at Studio Theatre, *Waitress* at Olney Theatre Center, *Sister Act* at Ford's Theatre, and *Porgy and Bess* at the Washington National Opera. [sierrayoung.org](http://sierrayoung.org) On social media @syoungfights (Instagram).

**CHAD DEXTER KINSMAN** (Dramaturg) is a theater maker, writer, and arts administrator. His theatre credits include *An Enemy of the People* at Yale Repertory Theatre, *Much Ado About Nothing* at Island Shakespeare Festival, *There Is a Happiness That Morning Is* at inD Theatre, *Everything That Never Happened* at Yale School of Drama, and *The Ugly One* at Yale Cabaret. He is a regular writer for *DC Theater Arts* and *Washington City Paper*, and created and hosts *Theater District Podcast*. On social media at @dexturgy (Instagram).

**JOHN KEITH HALL** (Production Stage Manager) has stage managed many productions at Studio including *Summer, 1976*; *Exception to the Rule*; *The Colored Museum*; *At the Wedding*; *Espejos*; *Clean*; *Fun Home*; *English*; *Bad Jews*; *Choir Boy*; *Cock*; *Water by*

*the Spoonful*; *Tribes*; *The Habit of Art*; *Torch Song Trilogy*; *4000 Miles*; *In the Red and Brown Water*; *The History Boys*; and *The Road to Mecca*. Other DC area credits include Woolly Mammoth Theatre Company, Olney Theatre Center, Signature Theatre, and The Kennedy Center. His regional credits include over 40 productions as Resident Stage Manager at the Barter Theatre as well as Shadowlands Stage, Virginia Musical Theatre, and Contemporary American Theatre Festival.

**DELANEY DUNSTER's** (Assistant Stage Manager; she/her) recent productions include *Exception to the Rule*; *Love, Love, Love*; *Fat Ham*; *Good Bones*; *English*; and *People, Places & Things* (ASM for all) at Studio Theatre; *Prayer for the French Republic* (PSM replacement) and *Hester Street* (ASM) at Theater J; *Moriarty* (ASM) at Arrow Rock Lyceum Theatre; *Joseph and the Amazing Technicolor Dreamcoat*, *American Mariachi*, and *The Marvelous Wonderettes* (ASM for all) at Alabama Shakespeare Festival; and *Happy, Proof, Lady Day at Emerson's Bar and Grill*, and *Four Seasons* (PSM) at Centre Stage. She received her BFA in Stage Management from Webster University. [takefiveopportunities.org](http://takefiveopportunities.org). On social media @delaneyclaredunster (Instagram).

**KACIE PIMENTEL** (Takeover Assistant Stage Manager) is a stage manager in the DMV area. Her theatre credits include *The Hot Wing King*, *John Proctor is the Villain*, and *White Noise* at Studio Theatre; *The Winter's Tale* at Folger Theatre; and *Water for Elephants*, *The Hot Wing King*, *The Boy Who Kissed the Sky*, and *Everybody* at Alliance Theatre. She has previously worked in stage management at Casa Mañana, Chautauqua Theater Company, and SeaWorld San Antonio. She graduated from the University of Houston, where she received her BFA in Theatre Stage Management.

**MCCORKLE CASTING** (Casting) has strived for inclusivity and social awareness over its 35-year history in casting and is pleased to be associated with this production. Broadway: more than 50 productions including *On the Town*, *Amazing Grace*, *End of the Rainbow*, *A*

*Few Good Men*, among others. Off Broadway: more than 60 productions, including *Tribes*, *Our Town*, and *Driving Miss Daisy*. Regional Theatres: Guthrie Theater, Barrington Stage Company, George Street Playhouse, the Contemporary American Theater Festival and hundreds of regional theatres throughout the country. Feature films: Currently casting six

films for theatrical release. Previous project highlights: *Premium Rush*, *Ghost Town*, *The Thomas Crown Affair*, *Die Hard with a Vengeance*, among others. Television: three new films for Hallmark, *Twisted*, *Sesame Street*, *Californication* (Emmy Nomination), *Chappelle's Show*, *Strangers with Candy* etc. [mccorklecasting.com](http://mccorklecasting.com)

---

## PRODUCTION STAFF

ASSISTANT DIRECTOR  
**NORA GEFFEN**

ASSISTANT LIGHTING DESIGNER  
**TYLER DUBUC**

PROPERTIES SUPERVISOR  
**AMY KELLETT**

SCENIC CHARGE  
**MEG ZETTELL**

PRODUCTION ASSISTANT  
**BRIAN MARTINEZ**

LIGHT AND SOUND OPERATOR  
**ARTHUR KOHN**

ASSOCIATE SCENIC DESIGNER  
**ZACHARY FARMER**

PRODUCTION  
MENTAL HEALTH SUPPORT  
**SARA MINDEL, LICSW**

TAKEOVER PRODUCTION  
ASSISTANT  
**CONRI CONNELL**

PROGRAM GRAPHIC DESIGNER  
**BILL GEENEN**

ASSOCIATE COSTUME DESIGNER  
**CODY VON RUDEN**

---

## DOWNSTATE COMMUNITY PARTNERS:

**FAIR REGISTRY**  
[fairregistry.org](http://fairregistry.org)

**DC JUSTICE LAB**  
[dcjusticelab.org/](http://dcjusticelab.org/)



---

Studio Theatre would like to thank Dr. James Fleming for his help on this production.



# LEADERSHIP

DAVID MUSE  
ARTISTIC DIRECTOR

REBECCA ENDE LICHTENBERG  
EXECUTIVE DIRECTOR

## BOARD OF TRUSTEES

Rob Batarla  
**CHAIR**

Karen Doyne  
**VICE CHAIR**

Navroz Gandhi  
**TREASURER**

Belinda Elvan Nixon  
**SECRETARY**

Marc Albert

Jeremías Alvarez

Susan L. Butler

Rick Donaldson

Dr. Mark Epstein

Mark W. Foster

Jinny Goldstein

Susan L. Gordon

John Guggenmos

Renee Matalon

Dr. Dayna Matthew

Larry Naake

Tuknekah Noble

Jamie C. Pate

Dusty Riddle

Katy Kunzer Rosenzweig

The Honorable Carol  
Schwartz

Teresa Schwartz

Luz Blancas Sevak

Barney Shapiro

Steven A. Skalet

Bobbi Terkowitz

Terry Theologides

Robert Tracy

Amy Weinberg

### **EX-OFFICIO**

David Muse

Rebecca Ende Lichtenberg

## FOUNDING ARTISTIC DIRECTOR

Joy Zinoman

## FELLOWS-IN-RESIDENCE PROGRAM

The Studio Fellows-in-Residence program prepares future artists and administrators for a successful career in the arts through a rigorous, hands-on training experience over the course of a full theatrical season.

### **PROGRAM SPONSORS**

SUSAN AND DIXON BUTLER

SARI HORNSTEIN

TERESA AND DAN SCHWARTZ

AMY WEINBERG AND NORBERT HORNSTEIN

With additional support from Paul M. Angell Family Foundation, and Jeffrey Bauman and Linda Fienberg.

**ARTISTIC****DANILO GAMBINI**

Associate Artistic Director

**ADRIEN-ALICE HANSEL**

Literary Director

Commissioned Artists

**SIVAN BATTAT****RAYMOND O. CALDWELL****SARAH DELAPPE****ERIKA DICKERSON-  
DESPENZA****MIRANDA HAYMON****MOLLY SMITH METZLER****TYNE RAFAELI****GEOFF SOBELE**

Readers Circle

**MALAIKA FERNANDES****FRANCESCA SABEL****PRODUCTION****JEFFERY MARTIN**

Director of Production

**CLARICE BERARDINELLI**

Rentals &amp; Events Manager

**MADISON BAHR**Assistant Production  
Manager**BRANDEE MATHIES**

Costume Shop Manager

**CHRISTION JONES**Lighting & Sound  
Supervisor**RHIANNON SANDERS**

Technical Director

**SARAH MCCARTHY**

Master Carpenter

**DEVELOPMENT****BIANCA BECKHAM**

Director of Development

**HANNAH HESSEL RATNER**Associate Director of  
Development**EMMA CUMMINGS**

Donor Relations Coordinator

**GENERAL  
MANAGEMENT****KATHRYN HUEY**Director of Finance &  
Administration**AMANDA ACKER**

Business Director

**CORY MCCONVILLE**

Operations Manager

**CARMEN PIERCE**Management &  
HR Coordinator**MARKETING AND  
COMMUNICATIONS****HILARY JUDIS**Director of Marketing and  
Communications**REBECCA FISCHLER**Associate Director of Marketing  
and Communications**SHANE OLIVER**

Audience Services Director

**GABBY WOLFE**

Marketing Insights Manager

**AVI LITTKY**

Digital Marketing Associate

**JEFF KLEIN**

Box Office Supervisor

Lead Box Office Associates

**MARTHA HAHN****SYDNE LYONS****CHARLOTTE NEWTON**

Box Office Associates

**TYMETRIAS BOLDEN****MAYA BROWN****JAMES LAU****ANNA LONGENECKER****HENRY MATICORENA**

Lead House Managers

**KECHE ARRINGTON****BRINDEN BANKS****DANIEL BINDER****MARCEL HARTLEY****STEPHANIE LANDRY****KAIYA LYONS****GAELYN SMITH****JAIDA GILLESPIE**

House Managers

**ARYSSA DAMRON****SPIKE DICKERSON****AUDRA JACOBS****MARCEL HARTLEY****LAYLA NABAVI****BOB REEG****ERIN SHORT****CHRISTIAN MORENO****MCKENNA CANTY****2024-25 FELLOWS****BLAKE BERGGREN**PRODUCTION AND EVENTS  
FELLOW**CLARISSA BRIASCO-  
STEWART**

ELECTRICS FELLOW

**NORA GEFFEN**

DIRECTING FELLOW

**GURSIMRAT KAUR**ARTISTIC PRODUCING  
FELLOW**ADRIAN KNAPPERTZ**SOUND AND  
PROJECTION FELLOW**BRIAN MARTINEZ**STAGE MANAGEMENT  
FELLOW**ISABELLA PEDRAZA**TECHNICAL DIRECTION  
FELLOW**ANASTASIYA RAKOVA**

BUSINESS FELLOW

**JULIANA SHRIVER**COMPANY MANAGEMENT  
FELLOW**ELIZA SNIPES**MARKETING AND  
COMMUNICATIONS FELLOW

# THANK YOU TO OUR SUPPORTERS

## ARTISTIC DIRECTOR'S CIRCLE

Cindy and Mark Aron  
Jeffrey Bauman and Linda Fienberg  
Nan Beckley  
Susan and Dixon Butler  
Trudy H. Clark  
Sheryl and Rick Donaldson  
Karen Doyne  
Dr. Mark Epstein and Amoretta Hoeber  
Hope and Mark Foster  
The Galena-Yorktown Foundation  
Bennett Goldberg Brown and Danielle Ellis McDonald  
Jinny and Michael Goldstein  
Susan L. Gordon  
John Guggenmos and Timur Loynab  
John and Meg Hauge  
Donald E. Hesse and Jerrilyn Andrews  
Sari Hornstein  
Rick Kasten  
Arlene and Robert Kogod  
Albert G. Lauber and Craig Hoffman  
Herb and Dianne Lerner  
Paul Massey and Josh O'Harra  
Joan and David Maxwell  
Lou Mazawey  
Belinda and Gregory Nixon  
Craig Pascal  
Kathleen Kunzer Rosenzweig and Paul Rosenzweig  
Teresa and Dan Schwartz  
Steve and Linda Skalet  
Andy and Ed Smith  
Bobbi and Ralph Terkowitz

Terry Theologides and Deb Rodriguez

Mark Tushnet and Elizabeth Alexander

Amy Weinberg and Norbert Hornstein

## OVATION CIRCLE

Marc Albert and Stephen Tschida  
Dr. Stewart Aledort and Dr. Sheila Rogovin  
Jeremías Alvarez  
Alan Asay and Mary Sturtevant  
Rob Batarla  
Bernard Family Foundation  
Robin Berrington  
Peter Bieger  
Lynn Bonde and Richard Lehmann  
The Honorable Ann Brown  
Cory and Rachel Capps  
John Chester and Betty Shepard  
Margery Doppelt and Larry Rothman  
E&B Family Trust  
Anne and Marc Feinberg  
Gerard Fiala  
Navroz and Perinaaz Gandhi  
Wendy and William Garner  
George Wasserman Family Foundation  
Henry H. and Carol Brown Goldberg  
The Greene-Milstein Family Foundation  
Frona Hall  
Larry Haller and Sherry Marts  
Richard and Pamela Hinds  
Lynne and Joseph Horning  
Gale Anne Hurd  
Hal Jones and Anne-Lise Auclair-Jones  
John Keator and Virginia Sullivan  
Helen and David Kenney  
Judy and Peter Blum Kovler Foundation  
Barry Kropf  
Vinca and David LaFleur  
Pat Lark and Lutz Prager  
The Lewis Butler Foundation  
Linwei Li  
B. Thomas Mansbach  
Renee R. Matalon and Stephen H. Marcus  
Dan and Karen Mayers  
Virginia McArthur and E.C. Michael Higgins  
The Morningstar Foundation

Morrisette Family Foundation  
Zell Murphy and Mark Wasson  
Ken and Margaret Muse  
Larry and Joan Naake  
Carl and Undine Nash  
Tuknekah Noble  
The Nussdorf Family Foundation  
Bill and Louisa Newlin  
Jamie Pate  
Merrie Pearl and Dylan Slotemaker  
Carl and Margaret Pfeiffer  
Daniel Pink  
Michael and Penelope Pollard  
Ane Powers  
Sara Rosenbaum and Dan Hawkins  
Steven M. Rosenberg and Stewart C. Low III  
Irene Roth and Vicken Poochikian  
Dr. April Rubin and Mr. Bruce Ray  
Linda and William Rule  
Stephen A. Saltzburg and Susan Lee  
Sandra And Gilbert Oken Foundation  
Sandra and Albert Schlachtmeyer  
The Honorable Carol Schwartz  
Barney Shapiro  
Linda and Stanley Sher  
David and Peggy Shiffrin  
Aimee Smart and Shefa Gordon  
Spoor Family Fund  
Ed Starr and Marilyn Marcossou  
Robert Tracy and Martha Gross  
Kazuko and Yoshine Uchimura  
Judy and Leo Zickler

## OPEN CIRCLE

Dean Amel and Terry Savela  
Marcia and Larry Arem  
R. Joseph Barton  
Scott Douglas Bellard  
Allan and Michele Berman  
Jessica Berman  
Joe and Sue Bredekamp  
Susan Buffone  
Blain and Peg Butner  
E. S. Carton  
Jessica Case  
Dr. Morris J. Chalick  
Cecilia Chandler  
Cathi Cohen  
David Cooper and Stephen Nash  
Michael Crosswell  
Johanna Cummings  
Carol and John Danks  
Richard and Janet Dante

Laurie Davis and Joseph Sellers  
 Deanna K. Dawson  
 Nancy Deck and Michael Gross  
 John Driscoll  
 Benjamin Duignan  
 Wayne Farmer  
 James A. Feldman and  
 Natalie Wexler  
 Jill A. Fields  
 Leo S. Fisher and Susan J. Duncan  
 Gift Fund  
 Trudy Fleisher  
 Michelle Friedman and  
 Bradley Parnell  
 Amy C. Gilbert and Steven Newpold  
 Paula Seigle Goldman  
 Richard Graf  
 Ruth B. Gramlich  
 John G. Guffey  
 Gail Gulliksen  
 Bonnie and Alan Hammerschlag  
 Wendell Hausdorff  
 James Heegeman  
 Margaret Freeston Hennessy  
 Jonathan Herz and Steven Hill  
 Lucia Hill  
 Linda Lurie Hirsch  
 Melane Hoffman  
 John Horman  
 Marvene Horwitz  
 John and Gail Howell  
 Leonade D. Jones  
 Thomas Joseph  
 Mr. Christopher Junker  
 Terrance Kalarhurka  
 Jeremy and Marnie Kaplan  
 Kyle Kerr  
 William and Luis Kibby  
 Robert L. Kimmins  
 Lauren Kogod and David Smiley  
 Leslie Kogod  
 Michael W. Kolakowski  
 Patricia and John Koskinen  
 Dr. and Mrs. William Kramer  
 Robert Lanman and Debra Bergoffen  
 Chad Lash and Caryn Wagner  
 Marion Ein Lewin  
 Janet Lewis  
 Romana Li and Bruce Bartels  
 Lifland-Radmer Fund  
 Jim and Sharon Lowe  
 J. Thomas Marchitto and  
 Shawn C. Helm

Dan and Susan Mareck  
 Martha Washington Straus-Harry H.  
 Straus Foundation  
 Lynne Martin  
 Dayna Bowen Matthew  
 Winton E. Matthews  
 Bruce and Mara Mayor  
 Kathy McGuire  
 Jeffrey Menick  
 Jane Molloy  
 The Mufson Family Foundation  
 Misti Mukherjee and Mike Williams  
 Lou and Sherry Nevins  
 Martha Newman  
 Nancy S. Olson  
 Patty and Jerry Olszewski  
 Linda and Peter Parshall  
 Jane Passman and Jack Moyer  
 Prayson and Jane Pate  
 Stan Peabody  
 Timothy Price  
 Reinsch Pierce Family Foundation by  
 Lola C. Reinsch  
 Dusty Riddle and Daniel Aune  
 Jane Ringel  
 Julie Rios  
 Jim Ritter  
 Lucinda Romberg  
 Steve and Ilene Rosenthal  
 Leslie Rossen  
 Lynn Rothberg  
 Alan F. Rothschild Jr.  
 Frank Sammartino and Ellen Starbird  
 John Sargent  
 Linda B. Schakel  
 The Schlossberg Family Fund  
 Richard Tucker Scully and  
 Lee A. Kimball  
 Amit Sevak and Luz Blancas Sevak  
 Jennifer Shea and Peter Bruns  
 Elaine and English Showalter  
 Stuart Sirkin and  
 Arlene Farber Sirkin  
 John and Ann Skeele  
 Carl Wayne Smith  
 Cecile Srodes  
 Suzanne P. Stetkevych  
 David Stevens and Linda Wymbs  
 Jeanne Stovroff  
 Thomas Strikwerda and  
 Donna Stienstra  
 Aileen and Jack Sullivan  
 Grant P. and Sharon R. Thompson

Drs. Chuck and Cécile Toner  
 Steve Verna  
 Eric R. and Laura M. Wagner  
 Anne and Ernie Wallwork  
 Elisse Walter and Ronald Stern  
 Gloria Weissberg  
 Kip Weissman and Kathy Balog  
 Westport Foundation -  
 Gail and John Harmon  
 Carolyn L. Wheeler  
 Jack and Sue Whitelaw  
 Jeffrey Wilder  
 Sandy and Jon Willen  
 Natalie Winston  
 Paul Wolfson  
 Daniel and Beverly Yett  
 Eleanore Zartman  
 Karen Zier and Walter Williamson  
 Allison and Doug Zabransky  
 Margot Lurie Zimmerman

## **CORPORATE, FOUNDATION, AND GOVERNMENT SUPPORT**

Anonymous  
 William S. Abell Foundation, Inc.  
 Dallas Morse Coors Foundation for  
 the Performing Arts  
 DC Commission on the Arts and  
 Humanities  
 Dimick Foundation  
 Fannie Mae's Gift Matching Program  
 The Jacob and Charlotte Lehman  
 Foundation  
 JBG Smith Properties  
 The Max and Victoria Dreyfus  
 Foundation  
 Milton and Dorothy Sarnoff  
 Raymond Foundation  
 The Morris and Gwendolyn Cafritz  
 Foundation  
 National Capital Arts and Cultural  
 Affairs Program and the US  
 Commission of Fine Arts  
 National Endowment for the Arts  
 The Nora Roberts Foundation  
 Paul M. Angell Family Foundation  
 Share Fund  
 The Shubert Foundation

\*In memoriam

This list represents contributions of \$500 or more made to the annual fund as of October 23, 2024. Every effort has been made to ensure the accuracy of this listing. For more information, please contact the Development Department at 202.919.3712.



# UP NEXT

BY MATTHEW CAPODICASA  
DIRECTED BY TIFFANY NICHOLE GREENE



Backstage tensions meet workplace hijinx  
in this world-premiere play.

PERFORMANCES BEGIN FEB 26, 2025  
**TICKETS ON SALE NOW**