

**AT
THE
WEDDING**



STUDIO
T H E A T R E

ABOUT STUDIO

Studio Theatre is a longstanding Washington cultural institution dedicated to the production of contemporary theatre. We are a community of artists and audience members who believe in the power of theatre to help us understand the world, engage with some of the most important ideas and issues of the day, and affirm our common humanity.

Over 40 years and more than 350 productions, Studio has grown from a company that produced in a single rented theatre to one that owns a multi-venue complex stretching half a city block, but we have stayed committed to our core distinguishing characteristics: deliberately intimate spaces; excellence in acting and design; and seasons that feature many of the most significant playwrights of our time. Each season, we present a diverse roster of thought-provoking contemporary plays, featuring local, national, and international artists. We also invest in the

incubation and development of new work and nurture the next generation of arts leaders. Studio is a values-focused organization that pursues artistry and inclusion, and brings characteristic thoughtfulness and daring to our efforts, onstage and off. We are committed to anti-racism and make a concerted effort to proactively dismantle barriers that have excluded people from joyful participation in our art form.

Rooted in our mission to foster a more thoughtful, empathetic, and connected community, Studio strives to welcome a wide and diverse audience. Our community engagement efforts include access and affordability initiatives, a growing community partner program, free student matinees, and a commitment to opening up our building as a hub for our neighborhood and city. In all that we do, Studio endeavors to make an essential contribution to the vitality of our nation's capital.



Photo by Jati Lindsay

T H E A T R E
T H E A T R E
T H E A T R E
T H E A T R E
T H E A T R E



T H E A T R E
T H E A T R E
T H E A T R E
T H E A T R E
T H E A T R E
T H E A T R E
T H E A T R E
T H E A T R E
T H E A T R E
T H E A T R E

FRIENDS,

Weddings are charged events. Attendees step out of the everyday, gather with a multigenerational community of friends and strangers, and participate in a rite of passage suffused with emotion. They are a universally experienced cultural phenomenon, and we all have potent memories attached to them—weddings that were moving, excruciating, beautiful, hideous, old-fashioned, new-fangled. Weddings make great fodder for a play.

The production marks the DC debut of playwright Bryna Turner. Bryna is a Studio kind of writer—savvy about structure, comedy, subtext, and revelation of character—who gives us here a wedding that is both recognizable and reshaped for today.

The production team bringing Bryna's play to vibrant life is notably full of artists with deep ties to Studio: director Tom Story, who has acted at Studio numerous times and made his directorial debut here a decade ago; Holly Twyford, who is working on Studio production number thirteen; former full-time staff members Luciana Steconci, Deb Thomas, and John Hall, each of whom have worked on dozens and dozens of shows here; and ML Geiger, Danielle Preston, Dina Thomas, and Emily Kester, and all returning to work on their third or fourth Studio production.

These veterans are joined by an almost equally large group of artists making their Studio debuts. All of them are generous, warm-hearted people who have filled this building with good vibes for weeks. I'm excited to share their work with you.

Yours,

A handwritten signature in black ink that reads "David". The signature is written in a cursive, flowing style.

DAVID MUSE
ARTISTIC DIRECTOR

STUDIO THEATRE

DAVID MUSE
ARTISTIC DIRECTOR

**REBECCA ENDE
LICHTENBERG**
EXECUTIVE DIRECTOR

PRESENTS

AT THE WEDDING

**BY
BRYNA TURNER**

**DIRECTED BY
TOM STORY**

SET DESIGNER
LUCIANA STECONI

COSTUME DESIGNER
DANIELLE PRESTON

LIGHTING DESIGNER
MARY LOUISE GEIGER

SOUND DESIGNER
JANE SHAW

PROPS DESIGNER
DEB THOMAS

MOVEMENT COORDINATOR
BRITTA JOY PETERSON

DRAMATURG
ADRIEN-ALICE HANSEL

PRODUCTION STAGE MANAGER
JOHN KEITH HALL*

DIRECTOR OF PRODUCTION
JEFFERY MARTIN

TECHNICAL DIRECTOR
RHIANNON SANDERS

CASTING BY
ALAN FILDERMAN

UNDERWRITTEN BY
**ALBERT G. LAUBER &
CRAIG HOFFMAN**

At the Wedding is presented by arrangement
with Concord Theatricals on behalf of Samuel
French, Inc. www.concordtheatricals.com

Produced by Lincoln Center Theater
New York City, 2022

At the Wedding was developed, in part,
at TheatreSquared as part of the
Arkansas New Play Festival



The scenic, costume, lighting and
sound designers in LORT Theatres are
represented by United Scenic Artists,
Local USA-829 of the IATSE

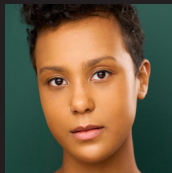
SETTING

A wedding in Northern California

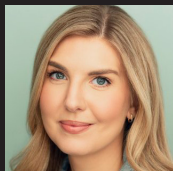
CAST



CARLO
DINA
THOMAS*



LEIGH
CAMERON
SILLIMAN*



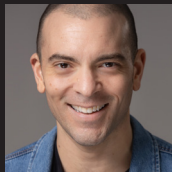
CARLY
EMILY
KESTER*



EVA
YESENIA
IGLESIAS*



ELI
JAMIE
SMITHSON*



VICTOR
JONATHAN
ATKINSON*



MARIA
HOLLY
TWYFORD*

UNDERSTUDIES

CARLO
ALLISON FITZGERALD

MARIA
ALISON BAUER

CARLY/EVA
KORINN WALFALL

LEIGH
KATE KENWORTHY

ELI/VICTOR
KEITH RUBIN



*Member of Actors' Equity Association, the Union of Professional Actors and Stage Managers in the United States.

The videotaping or making of electronic or other audio and/or visual recordings of the production and distributing recordings or streams in any medium, including the internet, is strictly prohibited, a violation of the author(s)'s rights and actionable under United States copyright law.

PLAYWRIGHT



BRYNA TURNER

BRYNA TURNER's plays include *At the Wedding*, *Bull in a China Shop*, *Phases of the Moon*, and *How to Separate Your Soul from Your Body (in ten easy steps!)*. Honors include Lincoln Center's Emerging Artist Award in Theatre and the Laurie Foundation's Theatre Visions Award. Their work has been produced, developed, or presented by American Conservatory Theater, About Face Theatre, Aurora Theatre, Clubbed Thumb, Diversionary Theatre, LCT3, National Theatre, TheatreSquared, WP Theater, and others. They are an alum of Clubbed Thumb's Early Career Writers Group, WP Theater's 2018-2020 Lab, and a MacDowell Fellow. They are currently under commission from Lincoln Center Theater. B.A.: Mount Holyoke College, MFA: Rutgers University. brynaturner.com

DIRECTOR



TOM STORY

TOM STORY is an actor, director and teacher living in Washington, DC. He has appeared in over 75 plays in Washington, DC; New York; and around the country. He has directed at Studio Theatre, Round House Theatre, Berkshire Theatre Group, Imagination Stage, Adventure Theatre MTC, and American University. Tom has been nominated for multiple Helen Hayes Awards and is a Fox Foundation Fellow, a Cabinet member of Studio Theatre, and a graduate of Duke University and The Juilliard School. He studied acting with Michael Kahn and directing with Joy Zinoman.

ACTORS

DINA THOMAS (Carlo) is a DC theater artist and real estate agent. Her Studio Theatre credits include *Cry It Out* and *2.5 Minute Ride*. Her Off Broadway credits include *The Metromaniacs* at Red Bull Theater, *Clever Little Lies* at Westside Theatre, and *Tribes* at Barrow Street Theatre. Regional credits include *Much Ado About Nothing* and *The Metromaniacs* at Shakespeare Theatre Company; *The Chameleon* and *The Wanderers* at Theater J; *Everything You Touch* at Contemporary American Theater Festival; *The Metromaniacs* at The Old Globe; *See How They Run* and *10x10 New Play Festival* at Barrington Stage Company; and *Bad Jews* (BroadwayWorld Award, Best Actress), *I'm Gonna Pray For You So Hard*, and *Miss Witherspoon* at Unicorn Theatre. She has an MFA in Acting from the University of Missouri-Kansas City and a B.A. in Theatre from Binghamton University. On social media @tinydthomas and @dbtrealtor (Instagram).

EMILY KESTER (Carly) is an actor based in Washington, DC. Her previous Studio credits include *The Hard Problem* and *Edgar & Annabel*. Her regional theatre credits include *The Trip to Bountiful*, *Silent Sky*, and *A Christmas Carol* at Ford's Theatre; *Maz and Bricks* at Solas Nua; *Detroit '67* at Signature Theatre; *Labour of Love* at Olney Theatre Center; *The Last Schwartz* at Theater J; *Noises Off* and *The Revolutionists* at Everyman Theatre; *Equus* at Constellation Theatre Company; and *The Little Mermaid* and *The BFG* at Imagination Stage. She is a graduate of the University of North Carolina at Greensboro and holds a BFA in Acting. On social media @emkester (Instagram) emilykester.com

JAMIE SMITHSON (Eli) is thrilled to be working with Studio Theatre for the first time. His Off Broadway credits include *Arcadia*, *Persuasion*, and *Fall River Fishing* with Bedlam, and *The Comedy of Errors* and *Romeo and Juliet* with The Acting Company. Some of his favorite regional credits include *Sense and Sensibility* with Bedlam at Folger Theatre, *Newsies* at Arena Stage, *Cake Off*

at Signature Theatre, *The Wanderers* at Theater J, *Boeing Boeing* with No Rules Theatre Company, *Twist Your Dickens* with Second City at the Kennedy Center, and *Fly By Night* at 1st Stage. He has also worked with Shakespeare Theatre Company, Mosaic Theater Company, Ford's Theatre, Imagination Stage, Round House Theatre, Everyman Theatre, Portland Center Stage, American Repertory Theater, and Guthrie Theater, among others. He has been nominated for two individual Helen Hayes awards for Best Actor and received his MFA in acting at Mason Gross School of the Arts, Rutgers University.

HOLLY TWYFORD (Maria) is thrilled to be back for her thirteenth show at Studio, and her first collaboration with Tom Story. Previous Studio productions include *The Steward of Christendom*, *The Desk Set*, *The Road to Mecca*, *Contractions*, and *Cloud 9*, all of which earned her Helen Hayes Awards nominations, and *The Shape of Things*, for which she received a Helen Hayes Award for Outstanding Lead Actress. She has performed in close to eighty productions in theaters in the Washington, DC area including Arena Stage, Shakespeare Theatre Company, Woolly Mammoth Theatre Company, and Signature Theatre. She has been nominated for multiple Helen Hayes Awards and is a five-time recipient. She was honored with Shakespeare Theatre Company's Emery Battis Award for Acting Excellence for her portrayal of Anna in Harold Pinter's *Old Times*. She is proud to be a charter member of Studio Theatre's Cabinet, a Ford's Theatre Associate Artist, and a Lunt-Fontanne Fellow. Also a director, she recently directed *Becoming Dr. Ruth* at the Village Theatre.

CAMERON SILLIMAN (Leigh; they/she) is an actor, singer, mover, and art maker. Their other theatre credits include *Fun Home* at TheaterWorks Hartford, *Twelfth Night* at The Center at West Park, and *Ghost the Musical* at Winnepesaukee Playhouse. Cameron can also be seen on an episode of the television

series *New Amsterdam*. She is also lead singer and co-founder of the NYC-based rock band Granite Garden. On social media @sillyman106 and @granitegardenmusic (Instagram).

YESENIA IGLESIAS (Eva) is an actor and educator from Bayamón, Puerto Rico. This is her Studio Theatre debut. Regional credits include: *POTUS: Or, Behind Every Great Dumbass are Seven Women Trying to Keep Him Alive* at Arena Stage; *Dance Nation* at Olney Theatre Center; *Daphne's Dive* and *Masterpieces of the Oral and Intangible Heritage of Humanity* at Signature Theatre; *Kid Prince and Pablo* at The Kennedy Center; *Love's Labour's Lost* at Folger Theatre; *The Legend of Georgia McBride* at Round House

Theatre; and *The Caucasian Chalk Circle* at Constellation Theatre Company, among others. She currently teaches at Howard University. Yesenia holds an MFA from the University of Washington Professional Actor Training Program. On social media @ye_iglesias (Instagram)

JONATHAN ATKINSON (Victor; he/him) is an actor and podcaster. His theatre credits include *Daphne's Dive* at Signature Theatre, *The Mortification of Fovea Munson* at the Kennedy Center, and *Ragtime* and *A Christmas Carol* at Ford's Theatre. Jonathan is co-host of *¡UY QUE HORROR! A Latinx Horror Movie Podcast*. On social media at @jonnyeliot and @uyquehorror (Instagram, Twitter, TikTok).

PRODUCTION

LUCIANA STECCONI's (Set Designer) previous Studio Theatre credits include *John Proctor is the Villain*, *Kings*, *The Effect*, *Hedda Gabler*, *Cloud 9*, *Contractions*, and many more. Recent regional designs include: *Fat Ham* at Huntington Theatre Company and Alliance Theatre, *The Art of Burning* at Huntington Theatre Company and Hartford Stage, *Witch* at Huntington Theatre Company, *Faith Healer* at Barrington Stage Company, *Antonio's Song* at Goodman Theatre, *Anna in the Tropics* at Bay Street Theater, *Agatha Christie's Murder on the Orient Express* and *Antonio's Song* at Milwaukee Rep, *Macbeth* at Merrimack Repertory Theatre, and *A Wind in the Door* at The Kennedy Center Theater for Young Audiences. She has designed for Woolly Mammoth Theatre Company, Round House Theatre, Signature Theatre, Theater J, Everyman Theatre, Olney Theatre Center, Mosaic Theatre Company, and the

Contemporary American Theatre Festival, among others. She is an Associate Professor in Scenic Design at Emerson College. Luciana holds an MFA in design from Brandeis University. lucianastecconi.com

DANIELLE PRESTON (Costume Designer) is a costume designer based in Washington, DC previous Studio Theatre credits include *Fat Ham*, *Clyde's*, and *P.Y.G. or the Mis-Education of Dorian Belle*. Recent regional credits include *Blues for an Alabama Sky* at Barrington Stage Company, *The Sensational Sea Mink-ettes* at Woolly Mammoth Theatre Company, *Passing Strange* and *Penelope* at Signature Theatre, *A Nice Indian Boy* at Olney Theatre Center, *Locomotion* at Children's Theatre Company, *School Girls*; or, *The African Mean Girls Play* and *The REALNESS* at the Hangar Theatre, and *Quamino's Map* at Chicago Opera Theater. Danielle received the 2022 OPERA America Tobin Director-Designer

PRODUCTION

Prize, the William R. Kenan Jr. Fellowship in Costume Design with The Kennedy Center, and the A.J. Fletcher Opera Institute Fellowship in Costume Design. She holds an MFA in Costume Design from the University of North Carolina School of the Arts. She is a proud member of United Scenic Artists Local 829. On social media @danielleprestondesign (Instagram) daniellepreston.com

MARY LOUISE GEIGER (Lighting Designer) is a lighting designer for theatre, dance, and opera. At Studio Theatre, she designed *Chimerica*, *Invisible Man* (Helen Hayes Award), and *Time Stands Still*. On Broadway, she designed *The Constant Wife* for the Roundabout Theatre Company. Her recent Off Broadway credits include *Spiritus/Vigil's Dance* at Rattlestick Theater, and *Partnership and Becomes a Woman* at Mint Theater Company. Regionally, her work includes *Last Night and the Night Before* at Steppenwolf Theatre Company; *Lady Day at Emerson's Bar and Grill* at Syracuse Stage; and *Leonora, la maga y le maestra* with Double Edge Theatre at the experimental theatre festival in Porsgrunn, Norway. Last May, she premiered Christopher Wheeldon's new ballet *From You Within Me* for New York City Ballet. She trained at the Yale School of Drama and teaches at NYU. mlgeiger.com

JANE SHAW (Sound Designer; she/her) is making her Studio Theatre debut. New York credits include *The Wanderers* at Roundabout Theatre Company, *The Fears* at Signature Theatre Company NYC, *Men on Boats* at Playwrights Horizons, *Actually* at Manhattan Theatre Club, *Measure for Measure* at Theatre for a New Audience, and productions with the Mint Theater Company, National Black Theatre, Repertorio Español, New York Theatre Workshop, and Bedlam. Regional credits include *A Christmas Carol* (composer) at Guthrie Theater; *Our Daughters, Like Pillars* at Huntington Theatre Company; *The Engagement Party* at Hartford Stage and Geffen Playhouse; and *The Railway Children* (co-composer/lyricist) at Northern Stage. She has also worked at Cleveland

Play House, The Old Globe, Mark Taper Forum, Two River Theater, Asolo Repertory Theatre, Dorset Theatre Festival, American Conservatory Theater, American Repertory Theater, TheatreWorks Silicon Valley, and Long Wharf Theatre. She is the recipient of a Drama Desk Award, Connecticut Critics Circle Award, Henry Award, Bessie Award, Meet the Composer Grant, and NEA/TCG Career Development Grant. She is a proud member of TSDCA (Theatrical Sound Designers and Composers Association) and USA Local 829. janeshaw.com

DEB THOMAS (Props Designer) was the Props Director at Studio Theatre from 2009 to 2019. Studio credits include set design for *Terminus*, assistant set design for *Bloody Bloody Andrew Jackson*, and props design for *Fat Ham*, *Heroes of the Fourth Turning*, *John Proctor is the Villain*, and *Pass Over*, among others. Additional credits include *Confederates*, *Monumental Travesties*, *Bars and Measures*, *The Till Trilogy*, *Marys Seacole*, *Birds of North America*, and *Eureka Day* at Mosaic Theater Company; and *The Tale of the Allergist's Wife* and *Freud's Last Session* at Theater J. Upcoming work includes *Metamorphoses* at Folger Shakespeare Theatre. She was a sculptor and sculpture consultant for TLC's *DC Cupcakes*, a set designer for the Washington Bureau of TV Tokyo, and did the original set design for Discovery Channel's *Puppy Bowl*. In addition to working for all national networks, her work includes production design for *Dolley Madison* and art direction for *Alexander Hamilton* (both PBS *American Experience*), as well as set design for Discovery Channel's *Moments in History*, "Jamestown: Against All Odds."

BRITTA JOY PETERSON (Movement Coordinator; she/they) is a director and choreographer who organizes constellations of relations on stage, page, and screen. BJP's recent work has been seen at The Kennedy Center, Dance Place in DC, The Floor in New York, Sibū International Dance Festival in Malaysia, Performance Mix 33 in New York, Lyric Repertory Company in Utah, Arts and

Society Conference in France, Imagination Stage in Maryland, Triskelion Arts in New York, Sonics Immersive Media Lab in England, Paramount Theatre in Minnesota, as well as on NBC, CBS, and in independent short and feature films. BJP is a co-founder of the performance platforms “Exquisite Frame” in DC and “SH*T GOLD” in Washington and has designed award-winning dance curricula for American University and Western Wyoming Community College. BJP holds an MFA from Arizona State University and is based in Lenapehoking/Brooklyn. brittjajoypeterson.com

ADRIEN-ALICE HANSEL (Dramaturg; she/her) is the Literary Director at Studio, where she has dramaturged the world premieres of *Good Bones*, *John Proctor is the Villain*, *I Hate it Here*, *Queen of Basel*, *No Sisters*, *I Wanna Fucking Tear You Apart*, *Red Speedo*, *Dirt*, *Lungs*, and *The History of Kisses*, among others, as well as productions of *Love, Love, Love*; *Fat Ham*; *Fun Home*; *English*; *Heroes of the Fourth Turning*; *Flow*; *2.5 Minute Ride*; *Translations*; *Curve of Departure*; *Wig Out!*; *Straight White Men*; and *Bad Jews* (twice), among others. Prior to joining Studio, she spent eight seasons at the Actors Theatre of Louisville, where she headed the literary department and coordinated project scouting, selection, and development for the Humana Festival of New American Plays. She is the co-editor of eight anthologies of plays from Actors Theatre and editor of 12 editions of plays through Studio. Adrien-Alice holds an MFA from the Yale School of Drama.

JOHN KEITH HALL (Production Stage Manager) has stage managed many productions at Studio including *Espejos*: *Clean*, *Fun Home*, *English*, *Bad Jews*, *Choir Boy*, *Cock*, *Water by the Spoonful*, *Tribes*, *The Habit of Art*, *Torch Song Trilogy*, *4000 Miles*, *In the Red and Brown Water*, *The History Boys*, and *The Road to Mecca*. Other DC area credits include *Ain't No Mo'*, *Where We Belong*, *Shipwreck*, *The Peculiar Patriot*, *Gloria*, *Familiar*, *Hir*, *An Octoroon*, and *The Nether* at Woolly Mammoth Theatre Company; *The*

Producers, *Mary Poppins*, *Sweeney Todd*, *Annie*, *The Crucible*, *On the Town*, *Matilda the Musical*, *Cabaret*, and *Beauty and the Beast* at Olney Theatre Center; *Show Way* at the Kennedy Center TYA; *Ain't Misbehavin'*, *Soon*, and *West Side Story* at Signature Theatre. His regional credits include over 40 productions as Resident Stage Manager at the Barter Theatre as well as Shadowlands Stage, Virginia Musical Theatre, and Contemporary American Theatre Festival.

ALAN FILDERMAN (Casting) has previously worked at Studio, having cast *Choir Boy* and *Wig Out!* here. Broadway credits include *33 Variations*, *Grey Gardens*, *Marie Christine*, *Master Class* (original production), and *Once on This Island* (original production). Off Broadway credits include *Fiorello!*, *Inner Voices*, *Langston in Harlem*, *The Boys in the Band* (2010), *Dessa Rose*, *Here Lies Jenny*, *A New Brain*, *A Beautiful Thing*, *Three Tall Women*, *From the Mississippi Delta*, *Song of Singapore*, and *The Sum of Us*. Regional credits include work with The Philadelphia Theatre Company, The O'Neill (plays and musicals), Sundance Institute Theatre Program (musicals), Weston Theater Company, TheatreWorks Silicon Valley and many other theatres across the country. Film credits include *Ice Age*, *Broadway Damage*, and *Anastasia*. Alan's work as a director includes productions of *Godspell*; *You're a Good Man, Charlie Brown*; and *Runaways*. Alan is an Adjunct Professor at NYU Tisch School of the Arts.

PRODUCTION STAFF

UNDERSTUDY SUPPORT
CLEOPATRA MAVHUNGA

ASSISTANT STAGE MANAGER
LUCAS GOMES

TAKEOVER ASSISTANT
STAGE MANAGER
MIRANDA KORIETH

ASSISTANT SCENIC DESIGNER
JACK GOLDEN

ASSISTANT LIGHTING DESIGNER
TYLER DUBUC

SEASON INTIMACY CONSULTANT
JENNY MALE

SCENIC CHARGE
MEG ZETTELL

SCENIC CARPENTERS
**CHRISTOPHER HUDERT,
SARAH MCCARTHY**

CASTING ASSOCIATE
ASHLEY MAPLEY-BRITTLE

WARDROBE
VIOLA COSTEN

COMPANY MANAGEMENT ASSISTANT
DELANEY DUNSTER

PROGRAM GRAPHIC DESIGNER
BILL GEENEN

PRODUCTION
MENTAL HEALTH SUPPORT
SARA MINDEL, LICSW

ACKNOWLEDGMENTS

**ROBERT CURINGTON JR., BASMA HOUBBI, AUBREI PACHECO,
AARYN JOHNSON, MELIK EDRIS**

GET YOUR PRIDE ON AT STUDIO

Studio Theatre offers exceptional spaces for events, such as meetings, receptions, and parties. With Pride month just around the corner, now is the perfect time to inquire about one of our spaces.

For more information
visit [Studiotheatre.org/rentals](https://studiotheatre.org/rentals)
or email events@studiotheatre.org



2023-2024 APPRENTICE PROGRAM



THE 2023-2024 CLASS OF APPRENTICES

(left to right): Ranteá Thompson, Di Carey, Tyandria Jaaber, Mae Mironer (standing), Alexa Locarno, Josh Morales, Cleopatra Mavhunga (standing), Malaika Fernandes, Lucas Gomes, Niara Richards, and David Plumer

T H E A T R E
T H E A T R E
T H E A T R E
T H E A T R E
T H E A T R E
T H E A T R E
T H E A T R E
T H E A T R E
T H E A T R E
T H E A T R E
T H E A T R E
T H E A T R E
T H E A T R E
T H E A T R E

Studio Theatre's Apprentice Program is designed to nurture a new generation of theatre leaders. Since its creation in 2006, the program has provided on-the-job training for over 150 early-career directors, production and technical staff, and arts administration professionals in development, marketing and communications, finance, and general management. Apprentices spend a full season at Studio, during which time they receive a weekly stipend and live together in Studio housing a few blocks from the theatre. With their dedicated support, our Apprentice Program sponsors are helping Studio make this professional development experience possible.

PROGRAM SPONSORS

SUSAN AND DIXON BUTLER
SARI HORNSTEIN
AMY WEINBERG AND
NORBERT HORNSTEIN

With additional support from Paul M. Angell Family Foundation, Share Fund, and Jeffrey Bauman and Linda Feinberg

STAFF

ARTISTIC

DANILO GAMBINI

Associate Artistic Director

ADRIEN-ALICE HANSEL

Literary Director

CLEOPATRA MAVHUNGA

Directing Apprentice

MALAIKA FERNANDES

Producing and Community
Engagement Apprentice

Commissioned Artists

SIVAN BATTAT

RAYMOND CALDWELL

SARAH DELAPPE

ERIKA DICKERSON- DESPENZA

MIRANDA HAYMON

MOLLY SMITH METZLER

TYNE RAFAELI

GEOFF SOBELE

Readers Circle

DOM OCAMPO

FRANCESCA SABEL

PRODUCTION

JEFFERY MARTIN

Director of Production

KIERAN KELLY

Senior Facilities Manager

CLARICE BERARDINELLI

Rentals & Events Manager

MADISON BAHR

Assistant Production
Manager

BRANDEE MATHIES

Costume Shop Manager

CHRISTION JONES

Lighting & Sound Supervisor

RHIANNON SANDERS

Technical Director

DI CAREY

Sound & Projection
Apprentice

JOSH MORALES

Electrics Apprentice

LUCAS GOMES

Stage Management Apprentice

MAE MIRONER

Technical Direction Apprentice

TYANDRIA JAABER

Production & Events
Management Apprentice

DEVELOPMENT

BIANCA BECKHAM

Director of Development

HANNAH HESSEL RATNER

Associate Director of
Development

TOBIAS FRANZÉN

Development Operations
Manager

KATIE FLEET

Membership Coordinator

NIARA RICHARDS

Development Apprentice

GENERAL MANAGEMENT

KORI PRIOR

Interim Executive
Projects Manager

KATHRYN HUEY

General Manager

AMANDA ACKER

Business Director

LINDSEY MADSEN

Company Manager

CARMEN PIERCE

Management Associate

ALEXA LOCARNO

Business Apprentice

MARKETING AND COMMUNICATIONS

HILARY JUDIS

Director of Marketing and
Communications

REBECCA FISCHLER

Associate Director of Marketing
and Communications

GABBY WOLFE

Marketing Insights Manager

AVI LITTKY

Digital Marketing Associate

DAVID PLUMER

Marketing Apprentice

AUDIENCE SERVICES

SHANE OLIVER

Audience Services Director

JEFF KLEIN

Box Office Supervisor

Lead Box Office Associates

MARTHA HAHN

RACHEL MACKENZIE

Box Office Associates

MADISON BACINO

TYMETRIAS BOLDEN

MAYA BROWN

SYDNE LYONS

ALIX MAULITZ

LUCA MOCHI

CHARLOTTE NEWTON

Lead House Managers

KECHE ARRINGTON

BRINDEN BAKS

MARK BERRY

DANIEL BINDER

MICHELLE BLAU

MARY-MARGARET BYRD

KAIYA LYONS

CORY MCCONVILLE

House Managers

MARCEL HARTLEY

AUDRA JACOBS

BRIAN KLOSE

LAYLA NABAVI

ASHLEY NICHOLAS

BOB REEG

ERIN SHORT

MEMBERS MAKE THINGS HAPPEN AT STUDIO

Inside Studio is a dedicated group of individuals who contribute to the success of Studio's mission to share the best in contemporary theatre to our city.

INSIDE STUDIO MEMBERS INVEST IN

BOLD ARTISTRY

With the addition of the new Victor Shargai Theatre brings the opportunity to enhance our storytelling, design, and performance creativity in a newly renovated and fully adaptable space.

COMMUNITY

Studio opens its doors to students and underserved neighborhoods through our Student Matinee program.

NEW WORK

Through Studio R&D, Studio invests in the cultivation and creation of new work and emerging artists. Starting with Rachel Bonds's *The Wolf Twins* in 2014, Studio has produced at least one world premiere each season, with the most recent examples being the 2022 world premiere of Kimberly Bellflower's *John Proctor is the Villain* and the Studio-commissioned world premiere *Good Bones* by Pulitzer Prize-winning playwright James Ijames.



Jelani Alladin in *Choir Boy*.
Photo credit: Igor Dmitry.

Visit STUDIOTHEATRE.ORG/DONATE,
email DEVO@STUDIOTHEATRE.ORG
or call **202.919.3712** today to make your
tax-deductible gift

T H E A T R E
T H E A T R E
T H E A T R E
T H E A T R E
T H E A T R E
T H E A T R E



Julia May Jonas and David Muse at the 2023 ADC Dinner.

The Artistic Director's Circle is a dynamic group of individuals who support the artistic vision of Studio Theatre. Members understand the value of producing powerful contemporary work in intimate spaces and invest in Studio's innovative projects and initiatives while receiving unparalleled access to the art. Members of the Artistic Director's Circle receive exclusive opportunities to experience our work unlike any other of our giving circles.

ARTISTIC DIRECTOR'S CIRCLE

Jeffrey Bauman and Linda Fienberg

The Honorable Ann Brown

Susan and Dixon Butler

Trudy H. Clark

Sheryl and Rick Donaldson

Dr. Mark Epstein and Amoretta Hoeber

Hope and Mark Foster

The Galena-Yorktown Foundation

Jinny and Michael Goldstein

Susan L. Gordon

John and Meg Hauge

Sari Hornstein

Rick Kasten

Arlene and Robert Kogod

Katy Kunzer Rosenzweig and Paul Rosenzweig

Judge Albert Lauber and Prof. Craig Hoffman

Herb and Dianne Lerner

Joan and David Maxwell

Lou Mazawey

Belinda and Gregory Nixon

Teresa and Dan Schwartz

Daniel and Irene Simpkins

Steve and Linda Skalet

Bobbi and Ralph Terkowitz

Terry Theologides and Deb Rodriguez

Mark Tushnet and Elizabeth Alexander

Amy Weinberg and Norbert Hornstein

Robert H. Winter* and Carole Winter

*In memoriam

Without the generosity of our dedicated supporters, Studio Theatre could not continue to bring the best of contemporary theatre to our nation's capital. This list represents contributions of \$500 or more.

OVATION CIRCLE

Marc Albert and Stephen Tschida
 Dr. Stewart Aledort and Dr. Sheila Rogovin
 Jeremias Alvarez
 Alan Asay and Mary Sturtevant
 Rob Batarla
 Nan Beckley
 Cathy Bernard
 Robin Berrington
 Peter Bieger and Demian Gaiteri
 Lynn Bonde and Richard Lehmann
 Cory and Rachel Capps
 John Chester and Betty Shepard
 Rick and Gary Copeland
 Margery Doppelt and Larry Rothman
 Karen Doyne
 E&B Family Trust
 Anne and Marc Feinberg
 George M. Ferris
 Gerard Fiala
 Navroz and Perinaaz Gandhi
 Wendy and William Garner
 George Wasserman Family Foundation
 Henry H. and Carol Brown Goldberg
 Frona Hall
 Donald E. Hesse and Jerrilyn Andrews
 Richard and Pamela Hinds
 Linda Lurie Hirsch
 John Horman
 Lynne and Joseph Horning
 Hal Jones and Anne-Lise Auclair-Jones
 John Keator and Virginia Sullivan
 Helen and David Kenney
 Arlene and Martin Klepper
 Judy and Peter Blum Kovler
 Foundation
 Barry Kropf
 Vinca and David LaFleur
 Pat Lark and Lutz Prager
 Sydney Lewis
 The Lewis and Butler Foundation
 B. Thomas Mansbach
 Stanley and Rosemary Marcuss
 Mark and Carol Hyman Fund
 Sherry Marts and Larry Haller
 Ronald and Belind Mason
 Renee R. Matalon and Stephen H. Marcus
 Dan and Karen Mayers
 Virginia A. McArthur and E.C. Michael Higgins
 The Morningstar Foundation

Morrisette Family Foundation
 Zell Murphy and Mark Wasson
 Ken and Margaret Muse
 Larry and Joan Naake
 The Nussdorf Family Foundation
 Sandra And Gilbert Oken Foundation
 Jamie Pate
 Carl and Margaret Pfeiffer
 Daniel Pink
 Michael and Penelope Pollard
 Ane Powers
 Peter S. Reichertz
 Irene Roth and Vicken Poochikian
 Dr. April Rubin and Mr. Bruce Ray
 Linda and William Rule
 Stephen A. Saltzburg and Susan Lee
 Amit Sevak and Luz Blancas Sevak
 Barney Shapiro
 Linda and Stanley Sher
 David and Peggy Shiffrin
 Aimee Smart and Shefa Gordon
 Andy and Ed Smith
 Spoor Family Fund
 Ed Starr and Marilyn Marcossou
 Joshua Stiefel
 Robert Tracy and Martha Gross
 Alan and Irene Wurtzel
 Judy and Leo Zickler
 Margot Lurie Zimmerman

OPEN CIRCLE

Donald Adams and Ellen Maland
 Eddie Adkins and Jeff Mendell
 Dean Amel and Terry Savela
 Marcia and Larry Arem
 R. Joseph Barton
 Jason and Nichole Bassingthwaite
 Scott Douglas Bellard
 Dottie Bennett
 Jessica Berman
 Bernard Myers Fund
 for the Performing Arts
 Robin Berrington
 Joe and Sue Bredekamp
 Yolanda and Francis Bruno
 Family Fund
 Susan Buffone
 Michael Burke and Carl Smith
 Jessica Case
 Vincent Castellano
 Dr. Morris J. Chalick
 Nancy Chasen and Don Spero
 Will and Carol Cooke
 David Cooper and Stephen Nash
 Sharon and Dan Crampton
 Michael Crosswell
 Johanna Cummings
 Jonathan Cuneo
 Carol and Joseph Danks
 Richard and Janet Dante
 Laurie Davis and Joseph Sellers
 John Driscoll
 Ruth A. Dupree
 Leon and Miriam Ellsworth
 Paula Feeney and Patrick Shooltz
 James A. Feldman and Natalie Wexler
 Jill A. Fields
 The G.A. Files Foundation
 Christine Fisher and Oscar Goldfarb
 Leo S. Fisher and Susan J. Duncan
 Gift Fund
 Trudy Fleisher
 Charles Floto
 Sarah Hope Franks and Michael O. Moore
 Chris Gattuso
 Amy C. Gilbert and Steven Newpol
 Paula Seigle Goldman
 Ellen Goldstein
 Sally W. and Stephen W. Gresham
 Gail Gulliksen
 Jack Hairston Jr.
 Bonnie Hammerschlag
 James Heegeman
 Shawn C. Helm and J. Thomas Marchitto
 Margaret Freeston Hennessey
 Jonathan Herz and Steven Hill
 John and Gail Howell
 Katherine Howell
 Jason Johnston
 Leonade D. Jones
 Thomas Joseph
 Cary Kadlecak
 Terrance Kalahurka
 Kyle Kerr
 William and Luis Kibby
 Joanne Klesten and Jim Weinberg
 Christine and Gene Kilby
 Robert L. Kimmins
 Lauren Kogod and David Smiley
 Leslie Kogod
 Stuart Kogod and Denise Garone
 Patricia and John Koskinen
 Bette and William Kramer
 The Lafer Family Foundation
 Robert Lanman and Debra Bergoffen
 Chad Lash and Caryn Wagner
 Stephen A. Saltzburg and Susan Lee
 Marion Ein Lewin
 Janet Lewis
 Theodore C.M. Li and Courtney Pastorfield
 Mr. and Mrs. Frank Lieberman
 Ed Liebow and Erin Younger
 Lifland-Radmer Fund
 Krista Linn
 Dr. Richard F. Little
 Brian and Judy Madden
 Dan and Susan Marek
 Martha Washington Straus-Harry H. Straus Foundation
 Paul Martin
 Winton E. Matthews
 Wallis McClain
 Ellen and Richard Miller

Jane Molloy
 The Mufson Family Foundation
 Carl and Undine Nash
 Christopher Curtis and Susan Nash
 Louisa and William Newlin
 Martha Newman
 Nancy S. Olson
 Henry Otto and Judy Whalley
 Linda and Peter Parshall
 Stan Peabody
 Carl and Margaret Pfeiffer
 Ane Powers
 Roger Reeves and
 Ruth Lammert-Reeves
 Lola C. Reinsch
 Julie Rios
 Lucinda Romberg
 Steven M. Rosenberg and
 Stewart C. Low III
 Steve and Ilene Rosenthal
 Lynn Rothberg
 Alan F. Rothschild Jr.
 Jeffrey Rothstein and Lynn Bristol
 Carole and Barry Rubin
 Dee and Ron Sagall
 Frank Sammartino and Ellen Starbird
 Christina Samson
 Linda B. Schakel
 Sandra and Albert Schlachtmeyer
 The Honorable Carol Schwartz
 Tucker Scully and Lee Kimball
 Jennifer Shea and Peter Bruns
 John and Ann Skeele
 Sarah Sloan
 Karl Smith, Jr.
 Cecile Srodes
 David Stevens and Linda Wymbs
 Jeanne Stovroff
 Thomas Strikwerda and
 Donna Stienstra
 Aileen Sullivan
 Candy and Lawrence Sullivan
 Grant P. and Sharon R. Thompson
 Timbrel Fund
 Randy and Steven Toll
 Henry and Jessica Townsend
 James Turner
 Kazuko Uchimura
 Steve Verna
 Eric R. and Laura M. Wagner
 Anne and Ernie Wallwork
 Elisse Walter and Ronald Stern
 Kip Weissman and Kathy Balog
 Elizabeth B. White
 Jack and Sue Whitelaw
 Sandy and Jon Willen
 Natalie Winston
 Robert I. Wise
 Paul Wolfson
 Ann Yahner
 Eleanore Zartman

CORPORATE, FOUNDATION, AND GOVERNMENT SUPPORT

Anonymous
 William S. Abell Foundation, Inc.
 Dallas Morse Coors Foundation for
 the Performing Arts
 DC Commission on the
 Arts and Humanities
 Dimick Foundation
 The Embassy of Australia
 Fannie Mae's Gift Matching Program
 The Jacob and Charlotte Lehrman
 Foundation
 JGB Smith Properties
 Logan Circle Community Association
 Martha Washington Straus-Harry H.
 Straus Foundation
 The Max and Victoria Dreyfus
 Foundation
 Milton and Dorothy Sarnoff
 Raymond Foundation
 The Morris and Gwendolyn Cafritz
 Foundation
 National Capital Arts and Cultural
 Affairs Program and the US
 Commission of Fine Arts
 The Nora Roberts Foundation
 Paul M. Angell Family Foundation
 Share Fund
 The Shubert Foundation
 Weissberg Foundation

BENEFIT SUPPORT

Jeremias Alvarez
 Arent Fox LLP
 Cindy and Mark Aron
 Rob Batarla
 Allan and Michele Berman
 Cathy Bernard
 Sherri Blount and Edward W. Gray Jr.
 The Honorable Ann Brown
 Susan Buffone
 Susan and Dixon Butler
 Blain and Peg Butner
 Dr. Morris J. Chalick
 Trudy H. Clark
 Liz and Tim Cullen
 Mike Dellapa
 Sheryl and Rick Donaldson
 Karen L. Doyne
 Mona and Mark Elliot
 Dr. Mark Epstein and Amoretta Hoerber
 Carole Feld and David C. Levy
 Hope and Mark Foster
 Rhona Wolfe Friedman and
 Donald J. Friedman
 Navroz and Perinaaz Gandhi

Olena Gaponenko
 Wendy and William Garner
 Jinny and Michael Goldstein
 Susan L. Gordon
 John and Gail Harmon
 Meg and John Hauge
 Pamela and Richard Hinds
 Sari Hornstein
 Hal Jones and
 Anne-Lise Auclair-Jones
 Rick Kasten
 Maurine Kelly
 Kay Kendall and Jack Davies
 Rebecca Klemm
 Kathleen Kunzer and
 Paul Rosenzweig
 Judge Albert Lauber and
 Prof. Craig Hoffman
 Maureen Lewis
 B. Thomas Mansbach
 Sharon Marciel and Tom Monahan
 Ronald and Belinda Mason
 Renee Matalon and Stephen Marcus
 Bruce and Mara Mayor
 Lou Mazaway
 Virginia A. McArthur and
 Michael Higgins
 Howard Menaker and Patrick Gossett
 Elvi Moore
 Larry and Joan Naake
 Carl and Undine Nash
 Louisa and William Newlin
 Belinda and Gregory Nixon
 Craig Pascal
 Jamie Pate
 Bill Perkins and Evelyn Sandground
 Perkins Coie LLP
 Judy Racoosin
 Jennifer Randolph
 Irene Roth and Vicken Poochikian
 Dr. April Rubin and Bruce A. Ray
 Sandy Spring Bank
 The Honorable Carol Schwartz and
 Robert O. Tyler
 Teresa and Dan Schwartz
 Luz Blancas Sevak
 Steve and Linda Skalet
 Bobbi and Ralph Terkowitz
 Terry Theologides and
 Deb Rodriguez
 Karen Thomas
 Robin Thomashauer and David Florin
 Bob Tracy and Marty Gross
 Stephen Tschida and Marc Albert
 Robert O. Tyler
 Amy Weinberg and Norbert Hornstein
 Christopher and Beverly With
 Patricia Wynn

*In memoriam

This list represents contributions made to special events, special initiatives, and the annual fund received March 5, 2024. Every effort has been made to ensure the accuracy of this listing. For more information, please contact the Development Office at 202.919.3712.



UP NEXT

**A PRIMAL
WORLD PREMIERE
COMEDY**

**PROBLEMS
BETWEEN
SISTERS**

**BY JULIA MAY JONAS
DIRECTED BY SIVAN BATTAT**

PERFORMANCES BEGIN MAY 8, 2024
TICKETS ON SALE NOW

